

**UWSCOLLEGE**

University of  
Western Sydney  
Bringing knowledge to life



International Prospectus  
**PATHWAY PROGRAMS 2010**



**UWSCOLLEGE**

# Contents

UWSCollege – your pathway to university	1
UWSCollege Campuses	3
Why the University of Western Sydney	4
Sydney, Australia – a unique study destination	5
English Language Program	6–7
University Foundation Studies	8–9
Diploma Program	10–18
Diploma in Business and Commerce	12
Diploma in Engineering	13
Diploma in Information and Communications Technology	14
Diploma in Science	15
Diploma in Social Science	16
Diploma in Health Science	17
Diploma in Construction Management	18
UWSCollege Admissions Information	
Country Entry Requirements – Academic Pathway Programs	19–20
Program Dates	21
Course Fees	21
Important Information	22
Package your international visa	23
How to apply	24
Application Form	25
Location	29



At UWSCollege, we can help you reach your goals and build a strong foundation for your future.

#### Welcome to UWSCollege

Everything we do at UWSCollege is dedicated to providing International and Australian students with a pathway to university.

Our programs provide the academic knowledge and English language communication skills you will need for your chosen field of study. We also help to ensure you have the personal, cultural and social support you need to stay focused and achieve your goals.

#### Academic pathways to university

UWSCollege Academic Pathway Programs are the best way for you to prepare for university. The Pathway Programs include a fully accredited English Language Program, a University Foundation Studies Program, and a Diploma Program.

When you successfully complete\* your University Foundation Studies course, you are guaranteed entry into the first year of an undergraduate degree at the University of Western Sydney (UWS).

By successfully completing\*\* a UWSCollege Diploma, you are guaranteed entry into the second year of the corresponding degree at UWS.

#### Owned by UWS

UWSCollege is wholly-owned by UWS and is the University's preferred provider of English language, University Foundation Studies and Diploma courses. This means you are a student of UWS when you're enrolled in one of our UWSCollege Academic Pathway Programs.

As a student of UWSCollege, you are already part of the UWS community and have access to the University's wide range of education, leisure and social facilities.

## At UWSCollege we add value

#### Highly skilled teachers

UWSCollege's commitment to delivering high quality courses begins with the quality of our teaching staff. Our skilled, dedicated teachers have detailed knowledge of UWS programs, curriculum and learning objectives – and many years' experience working with international and local students.

#### Smaller class sizes

Our smaller class sizes make it easy for you to focus on your studies while you get to know other students and your teachers. This personal, relaxed atmosphere also helps our staff meet your individual needs on a daily basis.

#### Tailor your studies

We can help you tailor your UWSCollege Academic Pathway Program to suit your plans for a Bachelor degree. You simply need to choose streams in your preferred area of study and your transition from UWSCollege to university can be seamless.

#### Extra tuition

If you are facing the challenges of learning a new language and living in a new culture, UWSCollege provides extra tuition and support when you need it, by offering extra English and/or academic preparation classes.

## UWSCollege student support

UWSCollege offers much more than the opportunity to learn. When you study with us, we will work with you to help and support you in your effort to succeed.

Our dedicated Student Services team will help you feel at home on campus. They will give you information, advice, advocacy and referral services you may need for:

- » career counselling
- » courses and vocational advice
- » accommodation
- » personal, relationship and family matters
- » employment
- » adjusting to life in Australia
- » illness or disability
- » student visas

## Preparing for your arrival

Our support for you begins before you leave home. You will receive detailed information about UWSCollege in your UWSCollege Offer Pack, including information about accommodation choices, airport pickup, orientation details, and the living expenses, lifestyle and climate of life in Sydney. Your agent can also provide information you may need before you arrive in Australia. For more information visit: [www.uwscollege.edu.au](http://www.uwscollege.edu.au)

\*For English language proficiency levels and Grade Point Averages required for successful completion of your University Foundation Studies refer online at [www.uwscollege.edu.au](http://www.uwscollege.edu.au)

\*\*Successful completion of your Diploma requires a 50% pass rate in all required subjects.

# Your pathway to university

## English Language Program

The UWSCollege English Language Program offers a range of courses that suit every level of competency. These courses are taught by highly qualified TESOL\* teachers. Through the successes of our students, the English Language Program has established a national and international reputation for excellence.

## University Foundation Studies

University Foundation Studies provides the academic knowledge and skills you need to succeed at university. When you successfully complete\*\* your University Foundation Studies course, you will have specialised knowledge in your chosen field – and guaranteed entry to the first year of an undergraduate degree program at UWS, or guaranteed entry into a UWSCollege Diploma.

When enrolling in University Foundation Studies you will choose a study stream that corresponds with your preferred university course.

There are five streams from which to choose:

- » Arts/Humanities/Education
- » Business
- » Computing
- » Nursing
- » Science

## Diploma Program

UWSCollege Diplomas are offered in:

- » Business and Commerce
- » Engineering
- » Information and Communications Technology
- » Science

## New to 2010:

- » Social Science
- » Health Science
- » Construction Management

A Diploma is equivalent to the first-year of a corresponding undergraduate degree at UWS, so when you successfully complete\*\*\* your Diploma you can enter the second year of your undergraduate degree at UWS.

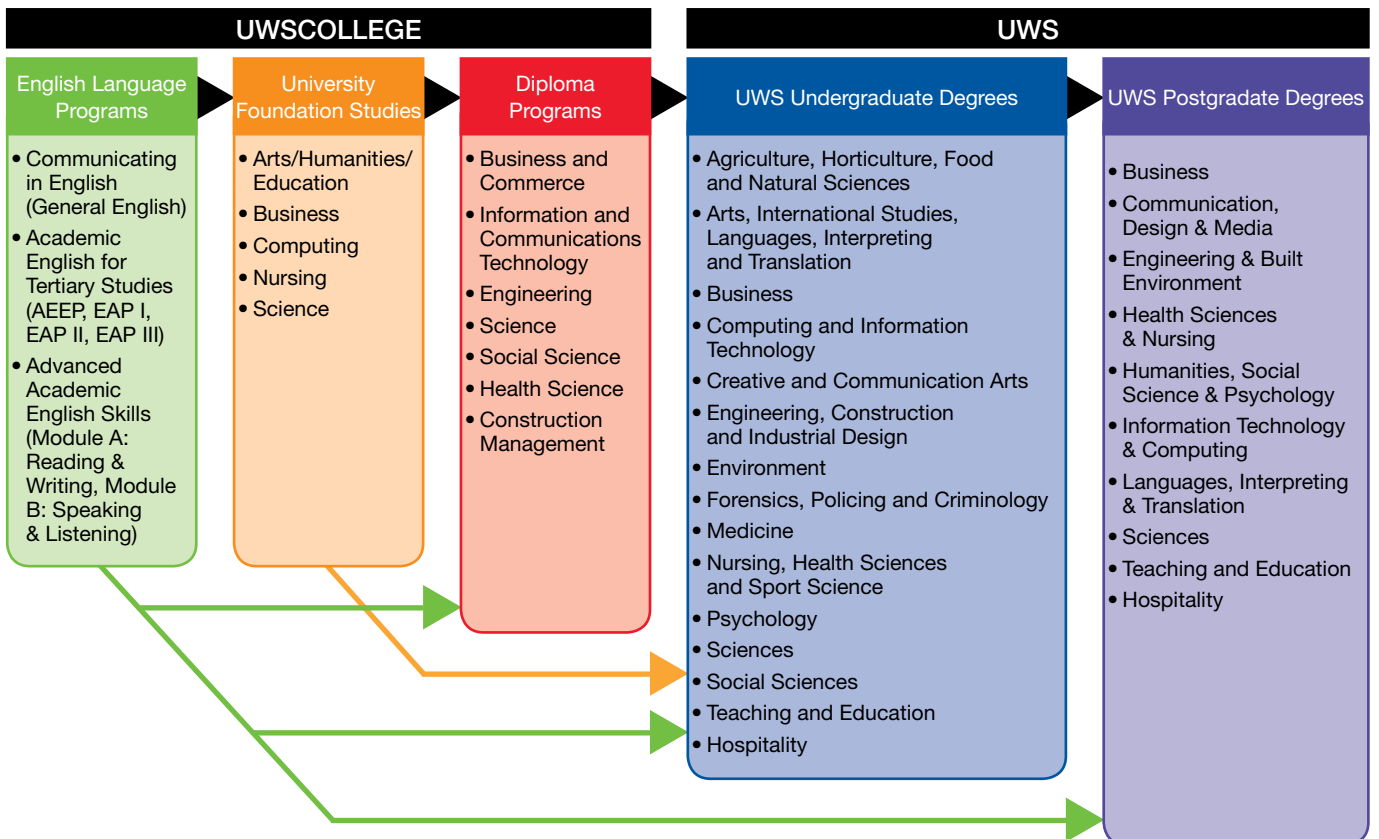
The Diploma programs are offered in two-semester (eight-month) and three-semester (12-month) formats. If you are accepted into the two-semester Diploma program (Fast-track), you can complete one university-equivalent year in eight months. This is a fantastic way for you to fast-track your studies.

\*TESOL Teachers of English to Speakers of Other Languages.

\*\*For English language proficiency levels and Grade Point Averages required for successful completion of your University Foundation Studies refer online at [www.uwscollege.edu.au](http://www.uwscollege.edu.au)

\*\*\*Successful completion of your Diploma requires a 50% pass rate in all required subjects.

## Your Pathway to Academic Success



# UWSCollege Campuses

UWSCollege English and Academic programs are located on two campuses at UWSCollege Nirimba, Quakers Hill, and at UWSCollege Westmead.

## UWSCollege Nirimba Campus

UWSCollege Nirimba Campus at Quakers Hill is the new home for our Academic Pathway Programs. This custom-built learning centre boasts tiered and flat-floored lecture theatres, a well resourced library, computer labs, outstanding recreation facilities, and on-campus accommodation. Additional facilities include academic and social support services, food outlets on campus, parking facilities, student common room, and prayer rooms.

## UWSCollege Westmead Campus

UWSCollege Westmead Campus is where we teach our English Language Programs for students on their pathway to university. The Westmead campus facilities include lecture and tutorial rooms, computer labs, internet access, academic and social support services, sporting equipment, food outlets on and off campus, parking facilities, student common room, and prayer rooms.

## How to get there?

Both campuses are near Parramatta in Sydney's Greater West. Both are on the same train line, with Westmead Campus just 30 minutes by train, and Nirimba campus at Quakers Hill 45 minutes by train, from the Sydney central business district.

## Campus Environments

The Parramatta area boasts the best in shopping, cinemas, affordable restaurants, cafes and nightlife, but it's also a thriving commercial centre and home to a host of large multinational companies and government organisations. With so much of Sydney's commercial life nearby, it offers plenty of opportunities for work placement and part time employment.

What's more, UWSCollege students can also take advantage of some secure, comfortable and affordable accommodation options including UWS on or off campus accommodation – we can even arrange home stay accommodation for students with an Australian family. UWSCollege offers students a great education and a unique lifestyle.



UWSCollege Nirimba Campus



UWSCollege Westmead Campus

# Why the University of Western Sydney?

When you successfully complete\* your UWSCollege Academic Pathway Program, you are guaranteed a place at the University of Western Sydney (UWS).

UWS is a place where international students come together to study and exchange ideas. This progressive university prides itself on 'Bringing Knowledge to Life' – combining academic excellence with hands-on, practical experience.

The courses of study offered by UWS are highly relevant in today's rapidly changing world. You can graduate from university with the knowledge and skills you need to succeed in your chosen career, as well as the practical ability to solve problems with confidence.

This progressive, dynamic university offers:

- » career-oriented courses
- » high levels of professional accreditation
- » high graduate employment rates
- » a balance of academic and practical learning
- » industry-savvy academic staff
- » well-regarded, innovative research programs.

## Six campuses in Western Sydney

With a population of over 36,000 students, UWS is one of the largest universities in Australia. It has six campuses located in Western Sydney – an unbeatable location in the multicultural heart of the largest city in Australia.

The UWS campuses are within 30 and 90 minutes' travel by train or car from Sydney's central business district. Every campus is also within easy reach of the World Heritage listed Blue Mountains, Olympic sporting and entertainment facilities, beaches, parklands – and a wealth of shops, cinemas, affordable restaurants, cafes and nightlife.

## A career in any discipline

The wide range of study choices at UWS allow you to pursue a career in almost any discipline. The following list is a guide to current UWS undergraduate and postgraduate programs:

Undergraduate
Agriculture, Horticulture, Food and Natural Sciences
Arts, International Studies, Languages
Business
Computing and Information Technology
Creative and Communication Arts
Engineering, Construction and Industrial Design
Environment
Forensics, Policing and Criminology
Law
Medicine
Nursing, Health Science and Sport Science
Psychology
Sciences
Social Sciences
Teaching and Education
Tourism and Hospitality

Postgraduate
Business
Communication, Design and Media
Engineering and Built Environment
Health Sciences and Nursing
Humanities, Social Science and Psychology
Information Technology and Computing
Languages, Interpreting and Translation
Law
Sciences
Teaching and Education
Tourism and Hospitality



UWS Parramatta Campus

For more information visit [www.uws.edu.au/international](http://www.uws.edu.au/international)

\*For English language proficiency levels and Grade Point Averages required for successful completion of your University Foundation Studies refer online at [www.uwscollege.edu.au](http://www.uwscollege.edu.au). Successful completion of a UWSCollege Diploma requires a 50% pass rate in all required subjects.

# Sydney, Australia

## – a unique study destination

When you arrive in Sydney, you will discover one of the best qualities of life offered anywhere in the world.

Sydney is Australia's oldest and largest city and enjoys a vibrant, multicultural way of life. As the commercial capital of Australia and home for 4.3 million people, its offerings include the Sydney Opera House and Sydney Harbour Bridge on a spectacular harbour, world class cultural centres, shopping facilities and restaurants, enchanting parklands and beaches, temperate weather and outstanding sporting facilities.

### Sydney's climate

Summer days in Sydney average 28° Celsius and can sometimes reach 40° Celsius. Winter days are usually sunny, averaging 15° Celsius and occasionally falling to 0° Celsius at night. The seasons in this temperate climate are:

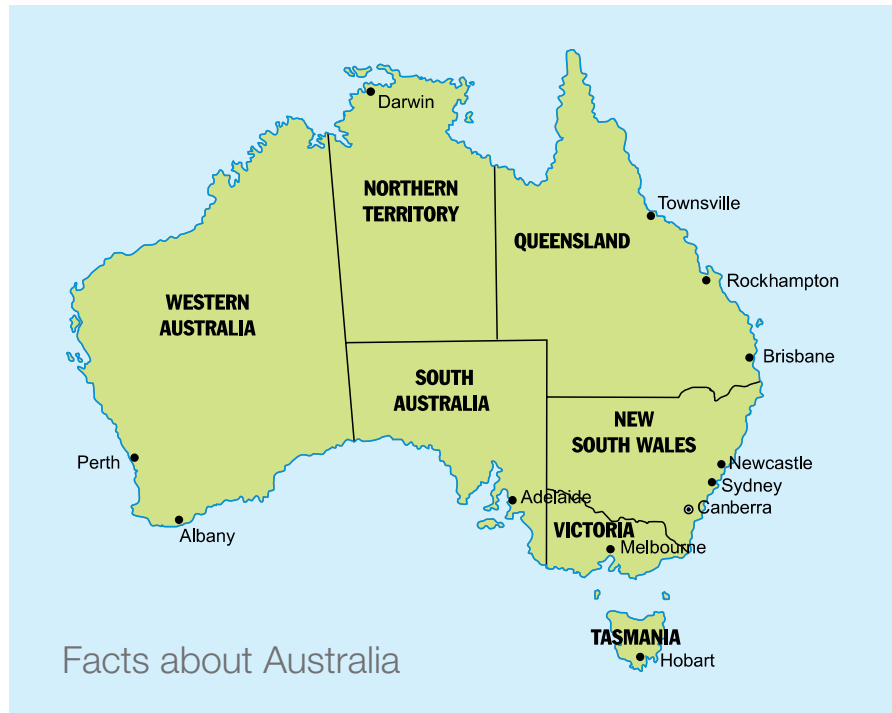
Winter	June to August
Summer	December to February
Spring	September to November
Autumn	March to May

### Western Sydney

Sydney's western region is where UWSCollege and all six campuses of the University of Western Sydney are located. This region is also home for nearly two million people – or one in every ten Australians. Half this population is under 30 years of age, which makes Western Sydney a vibrant place to live and study.

The head offices of 150 of Australia's top 500 companies are in Western Sydney, along with one of the largest undercover shopping malls in the southern hemisphere – all contributing to the region's claim as the third largest regional economy in Australia and helping to create a high standard of living and wonderful part-time employment opportunities for students, as well as strong career opportunities for graduates.

Importantly, Western Sydney is also well-served by Westmead Hospital, a large specialist training hospital and outstanding health care facility.



### Facts about Australia

Australia has eight states and territories: the Australian Capital Territory, New South Wales, Queensland, Tasmania, Victoria, Western Australia, South Australia and the Northern Territory.

Of Australia's 21 million people, 80% live in coastal regions.

Sydney is on the east coast, and the capital of New South Wales.



Sydney Harbour Bridge



Sydney City skyline

# English Language Program

The UWSCollege English Language Program offers fully accredited courses that can give you the confidence and communication skills you need to meet the challenges of university study.

UWSCollege has built a national and international reputation on the results we deliver. We are a member of English Australia (EA) and University English Centres Australia (UECA) and all of our English programs are accredited with the National ELT Accreditation Scheme Limited (NEAS) Australia.

## Fully accredited courses

### Communicating in English (General English) (Beginner to Advanced)

This general course prepares students for effective English language communication. It is designed to develop English proficiency, from a beginner level through to an advanced level, and teaches students how to communicate effectively in everyday society.

### Academic English for Tertiary Studies

The Academic English for Tertiary Studies course is designed for students who need to improve their English skills for entry into UWSCollege Academic Pathway Programs and university study. There are four levels in this program:

#### 1. Academic English Entry Program (AEEP)

This course provides a bridge between general English skills and academic skills in reading, writing, speaking and listening. During the course, students concentrate on basic grammar and sentence structure, then progress to more complex texts.

#### 2. EAP I

Through general course work, seminars, factual reports and assignments, EAP I introduces students to academic writing, reading, listening and speaking skills.

#### 3. EAP II

This course provides students with a broad academic language foundation and introduces students to a range of academic texts, building on the skills developed in EAP I.

#### 4. EAP III

In EAP III, students develop their English language skills to an advanced level of academic writing, listening, reading and speaking. This course is excellent preparation for university.

Students who complete it successfully do not have to take any further English language tests to gain entry to UWS and several other tertiary institutions.

### Advanced Academic English Skills

#### Module A: Reading and Writing

If you have either IELTS 6.5 or above, but a low score in reading/writing, or need to polish your writing skills before entry to further studies, Module A provides you with the intensive writing and reading practice you need.

#### Module B: Speaking and Listening

Module B focuses on providing you with high-level spoken communication skills for work or further study. It will also help improve fluency, pronunciation and public speaking skills. This course combines well with Module A.

### Entry Requirements

Please refer to the English language programs table on the following page for detailed information on intakes, duration, and entry and exit requirements for each course.

## Other English language programs

### English and UWS Study Abroad Package – two semesters

In the first semester you will study the Academic English for Tertiary Studies at UWSCollege. For second semester you will select three or four subjects to study from the undergraduate program of the University of Western Sydney (UWS).

### TOEIC Testing Centre

UWSCollege is a TOEIC Testing Centre. The Test of English for International Communication (TOEIC) is an English Proficiency test which measures the listening and reading comprehension of non-native speakers of English. Organisations use TOEIC scores to make employment decisions in areas such as assignments to overseas postings, promotion, training needs and training effectiveness.

### English Language Placement Test

UWSCollege offers an English Language testing service to determine whether you have the English language skills required for direct entry to the University of Western Sydney (UWS). The two-hour English Language Placement Test will assess your English skills in listening, reading and writing.

If you do not achieve the English level required by UWS in our English Language Placement Test or you do not have an IELTS or TOEFL certificate, you can enrol at UWSCollege in an Academic English for Tertiary Studies course. This course will help you gain entry to UWS.

### IELTS Test Preparation

The International English Language Testing System (IELTS) is an international English test used for entry to universities and other educational institutions, both within Australia and overseas. This course provides you with skills and confidence in test-taking, as well as an understanding of the IELTS Academic Module practice test. It prepares students for all four skills tested: reading, writing, listening and speaking.

### UWS IELTS Test Centre

The International English Language Testing System (IELTS) is an internationally accredited test for students who need to demonstrate English language proficiency. It is recognised by education institutions, employers, professional organisations, (such as the Australian Medical Council), and by government agencies such as Centrelink.

UWS now has an IELTS Test Centre at the UWSCollege Westmead Campus. There are a number of IELTS test dates available for both Academic and General streams. Tests are normally taken on Saturdays. For further detailed information including test dates please refer to the UWSCollege website at [www.uwscollege.edu.au](http://www.uwscollege.edu.au)



## English language programs table

The table below provides detailed information on intakes, duration, and entry and exit requirements for our fully accredited English language courses.

Course	Intakes	Duration (weeks)	Entry requirements*	Exit
Communicating in English (Beginner to Advanced)	February, April, July, September, November (Students can enter this course every Monday)	5–50	There is no required level of English for this course	Academic English for Tertiary Studies course
<b>Academic English for Tertiary Studies</b>				
AEEP	February, April, July, September, November	5–20	<ul style="list-style-type: none"> <li>• IELTS 3.0+</li> <li>• TOEFL 400/CBT 97/IBT 32</li> <li>• UWSCollege English Language Placement Test</li> </ul>	EAP I
EAP I	February, April, July, September, November	10	<ul style="list-style-type: none"> <li>• IELTS 4.5+</li> <li>• TOEFL 475/CBT 150/IBT 52</li> <li>• UWSCollege English Language Placement Test</li> </ul>	EAP II
EAP II	February, April, July, September, November	10	<ul style="list-style-type: none"> <li>• IELTS 5.0+ (minimum of 5.0 in writing)</li> <li>• TOEFL 500/CBT 173/IBT 61</li> <li>• UWSCollege English Language Placement Test</li> </ul>	<ul style="list-style-type: none"> <li>• EAP III</li> <li>• UWSCollege University Foundation Studies</li> </ul>
EAP III	February, April, May, July, September, November	10	<ul style="list-style-type: none"> <li>• IELTS 5.5/6.0+ (minimum of 5.0 in all areas)</li> <li>• TOEFL 525/CBT 193/IBT 69</li> <li>• UWSCollege English Language Placement Test</li> </ul>	<ul style="list-style-type: none"> <li>• UWSCollege Diplomas</li> <li>• UWS IELTS 6.5 Undergraduate and Postgraduate courses</li> <li>• UWS IELTS 7.0 Postgraduate courses</li> </ul>
<b>Advanced Academic English Skills</b>				
Module A: Reading and Writing	January, May, June, October, January	6	<ul style="list-style-type: none"> <li>• IELTS 6.5/7.0+ (minimum of 5.5 for reading and writing)</li> <li>• TOEFL 540/CBT 207/IBT 76/(TWE 3-5)</li> <li>• UWSCollege English Language Placement Test</li> </ul>	<ul style="list-style-type: none"> <li>• UWSCollege Diplomas</li> <li>• UWS IELTS 6.5 Undergraduate and Postgraduate courses</li> <li>• UWS IELTS 7.0 Postgraduate courses</li> </ul>
Module B: Speaking and Listening	January, April, November, January	4	<ul style="list-style-type: none"> <li>• IELTS 6.5/7.0 (speaking/listening 5.5)</li> <li>• TOEFL 540/CBT 207/IBT 76/(TWE 3-5)</li> <li>• UWSCollege English Language Placement Test</li> </ul>	<ul style="list-style-type: none"> <li>• UWSCollege Diplomas</li> <li>• UWS IELTS 6.5 Undergraduate and Postgraduate courses</li> <li>• UWS IELTS 7.0 Postgraduate courses</li> </ul>

- If IELTS subtest scores are low in Reading and Listening then Reading takes precedence.
- Exit points are generalised. Specific pass requirements apply for different courses. Please check the course requirements on arrival.



# University Foundation Studies

University Foundation Studies prepares you for university, both academically and socially. Courses are designed to introduce you to the knowledge and skills you need for your undergraduate degree at the University of Western Sydney.

On successful completion\* of University Foundation Studies, you are guaranteed direct entry into first year of a UWS undergraduate degree program, or you may also apply for entry into another university. You can also undertake a UWS College Diploma, which gives advanced standing of one year in a UWS undergraduate degree program and the opportunity to fast-track your studies.

## Study specialisations

UWS College University Foundation Studies has five study specialisations to choose from. Your choice of study specialisation is your link to your preferred university undergraduate program.

The five available study specialisations are:

- » Arts – for students wishing to study Arts, Humanities or Education
- » Business
- » Computing
- » Nursing
- » Science – for students wishing to study Science or Engineering.

For subjects and detailed subject descriptions for each study specialisation please go to [www.uwscollege.edu.au](http://www.uwscollege.edu.au)

## Formats and entry requirements

University Foundation Studies courses are offered in two formats. The formats and the number of semesters required will depend on the level of schooling completed and your academic grades.

Program name and format	Program Duration	Entry Requirement (Minimum)**
University Foundation Studies – three semester program (Extended)	12 months	<ul style="list-style-type: none"> <li>• Successful completion of Australian Year 11 or equivalent.</li> <li>• IELTS 5.5 or equivalent.</li> </ul>
University Foundation Studies – two semester program (Standard)	8 months	<ul style="list-style-type: none"> <li>• Successful completion of Australian Year 11 with excellent results, or equivalent.</li> <li>• IELTS 5.5 or equivalent.</li> </ul>

## Course Start Dates

March, June, October  
Refer online at:  
[www.uwscollege.edu.au](http://www.uwscollege.edu.au)  
for specific course start dates

## Course Fees

For more information on fees, refer online at: [www.uwscollege.edu.au](http://www.uwscollege.edu.au)

## UWS College Diploma and UWS Degree Entry Requirements

One of the advantages of studying at UWS College is that it has a direct-entry arrangement with the University of Western Sydney. After successfully completing University Foundation Studies and meeting specific entry requirements, you can study in a UWS College Diploma course, or enter the first year of your chosen undergraduate program at UWS.

For English language proficiency levels and Grade Point Averages required for successful completion of your University Foundation Studies refer online at [www.uwscollege.edu.au](http://www.uwscollege.edu.au)

*Kimmy Lau*

*China*

*University  
Foundation  
Studies - Arts  
2007*



*'UWS College has a great atmosphere and environment for learning and study. My advice to future students is to step forward and don't look back. Confidence is the key!'*

\*For results required for successful completion of your University Foundation Studies refer online at [www.uwscollege.edu.au](http://www.uwscollege.edu.au)

\*\* - Entry to Science and Computing study specialisations requires previous study of Mathematics at the level of Preliminary HSC, HSC or equivalent.

- International students who have completed Year 12 or equivalent and have IELTS 6.0 or equivalent may apply for advanced standing in the two semester course and complete one semester.

- For UWS College Country Specific Entry Criteria, refer to pages 19 and 20 of this brochure.

# Diploma Program

UWSCollege currently offers Diplomas in the fields of Business and Commerce, Information and Communications Technology, Engineering and Science.

In addition, from March 2010, we are offering a Diploma in Social Science, Health Science, and Construction Management.

UWSCollege Diplomas are equivalent to the first-year undergraduate university program in the relevant discipline at the University of Western Sydney. When you successfully complete\* your Diploma, you can enter the second year of your UWS degree course.

Diplomas are available in two-semester (eight month) or three-semester (12 month) formats. The two-semester format offers you a fantastic opportunity to fast-track your studies and gain two valuable qualifications – a Diploma and a Degree.

You can begin Diplomas at UWSCollege in March, June or October.

### Three-semester program (Standard)

Standard Diplomas are studied over three semesters, which gives you a full university year to complete your course. This timeframe is suitable for students with lower entry levels, or students who may require additional support.

### Two-semester program (Fast-track)

Fast-track Diplomas allow you to complete the equivalent of one university year in two semesters (eight months). Each semester is 18 weeks.

### Academic Pathways Package – the way to fast-track to second year university

If you want to complete your Degree as quickly as possible, you can fast-track your studies by completing a UWSCollege Diploma in two-semesters (eight months). If you are accepted into the Fast-track Diploma program, you will have the opportunity to complete a three-year UWS degree in two years and eight months.

If you decide to combine your University Foundation Studies course with a Diploma, you will be eligible for a visa that lasts for the duration of both courses. (See Packaging Your Visa on page 23).

### Degree entry requirements for Diploma students

To successfully complete your Diploma at UWSCollege you will need a 50% pass in all required subjects. This enables you to proceed to the University of Western Sydney with advanced standing of one-year-equivalent to a related UWS undergraduate degree course.

### Further study at other universities

Students can apply to any Australian university and will be assessed on an individual basis by that university.

If you would like to apply to another Australian university, you need to lodge an application with that institution. Following is a list of leading Australian universities and education centres to which UWSCollege students have been accepted:

- » Australian Catholic University
- » Billy Blue College of Design
- » Blue Mountains Hotel and Management School
- » Central Queensland University
- » Macquarie University
- » Technical and Further Education (TAFE) colleges in New South Wales
- » University of Canberra
- » University of New South Wales
- » University of Newcastle
- » University of Sydney
- » University of Technology, Sydney
- » University of Wollongong

*Elie Khalil*

*Lebanon*

*Academic English for Tertiary Studies 2007*

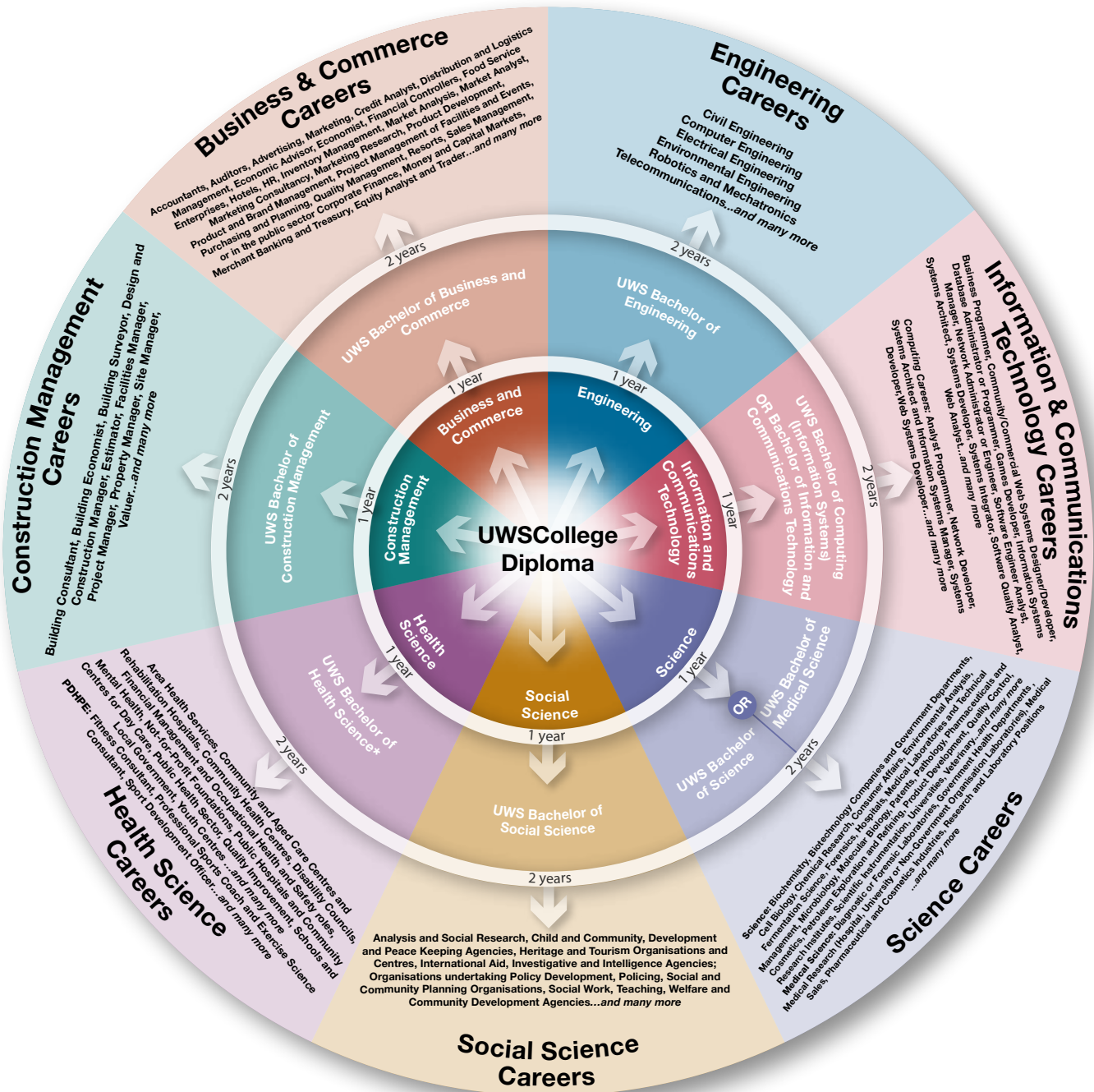
*Diploma in IT 2008*



*'I chose UWSCollege because I could study English and IT then go on to further study at UWS. The level of education is very high at UWSCollege and the teachers are friendly, kind, and very helpful.'*

\*Successful completion of your Diploma means gaining a 50% pass in all required subjects

# Your Academic Pathway to Career Success



\* Key programs for the Bachelor of Health Science are: Therapeutic Recreation, Health Services Management, Health Promotion, PDHPE. Please refer to Health Science page for more information.

This chart is based on a one year diploma. Fast Track (eight month) options are available.

These are an overview of the many possible career paths following the key programs you choose to study at UWS.

# Diploma in Business and Commerce

The UWSCollege Diploma in Business and Commerce provides you with a broad range of knowledge and skills that prepare you for second year of your Degree at the University of Western Sydney.

You can complete your Diploma in the standard three semesters, or fast-track your studies in a two-semester program. If you meet entry criteria, the Fast-track program allows you to complete one university-equivalent year in eight months.

## Academic entry requirements

Academic entry requirements vary according to country of origin. For country-specific entry criteria, please refer to pages 19–20 of this brochure. In general, entry is based on the successful completion of Australian Year 12 or equivalent or UWSCollege University Foundation Studies or equivalent, with a Grade Point Average of 6.0 or higher.

Students are also assumed to have studied Mathematics at senior high school level.

## English entry requirements

International students must satisfy one of the following language requirements:

- » IELTS 6.0 with a minimum of 5.5 in each sub band.
- » Completion of UWSCollege EAP III course with a 50% pass.
- » A 'C' result in the University Foundation Studies Academic English course.
- » A result in the UWSCollege English Placement Test at IELTS 6.0 equivalent.

## Entry into your Degree at UWS

Successful completion of the Diploma in Business and Commerce gives you advanced standing of 80 credit points (first year study) in the Bachelor of Business and Commerce degree at UWS.

## Course Start Dates

March, June and October

Refer online at: [www.uwscollege.edu.au](http://www.uwscollege.edu.au) for specific course start dates.

## Course Fees

For more information on fees, refer online at: [www.uwscollege.edu.au](http://www.uwscollege.edu.au)

## Three-semester program (Standard)

### UWS Course Code: 7007

#### Key subjects

Accounting Fundamentals*
Statistics For Academic Purposes*
Tertiary Study Skills*
Accounting Information for Managers
Business Academic Skills
Information Systems in Context
Introduction to Business Law
Marketing Principles
Management Dynamics
Principles of Economics
Statistics for Business

\*No advanced standing at university will be granted for these subjects

## Two-semester program (Fast-track)

### UWS Course Code: 7008

#### Key subjects

Tertiary Study Skills*
Accounting Information for Managers
Business Academic Skills
Introduction to Business Law
Marketing Principles
Management Dynamics
Principles of Economics
Statistics for Business
AND
Information Systems in Context**
OR
Consumer Behaviour
Financial Accounting Applications
Introduction to International Business
Managing People at Work
Organisational Behaviour

\*No advanced standing at university will be granted for these subjects

\*\* If approved by both UWSCollege and UWS, students enrolled in the two-semester course may replace Information Systems in Context unit with one of the five UWS units listed immediately below it.

For more detailed subject descriptions please visit: [www.uwscollege.edu.au](http://www.uwscollege.edu.au)

## UWS Degree programs

### Bachelor of Business and Commerce

When you successfully complete your UWSCollege Diploma in Business and Commerce, you can progress to second year of the Bachelor of Business and Commerce at the University of Western Sydney, which offers programs in:

- » Accounting
- » Applied Economics
- » Applied Finance
- » Economics and Finance
- » Financial Mathematics
- » Global Operations and Supply Chain Management
- » Hospitality Management
- » Human Resource Development and Organisational Development
- » Human Resource Management and Industrial Relations
- » International Business
- » International Business and Global Management
- » International Trade and Finance
- » Management
- » Marketing
- » Property
- » Sport Management

# Diploma in Engineering

The UWSCollege Diploma in Engineering prepares students for tertiary study in Engineering. It also provides important prerequisite knowledge in Mathematics and Physics.

You can complete your Diploma in the standard three semesters, or fast-track your studies in a two-semester program. If you meet entry criteria, the Fast-track program allows you to complete one university-equivalent year in eight months.

## Academic entry requirements

Academic entry requirements vary according to country of origin. For country-specific entry criteria, please refer to pages 19–20 of this brochure. In general, entry is based on the successful completion of Australian Year 12 or equivalent or UWSCollege University Foundation Studies or equivalent, with a Grade Point Average of 6.0 or higher.

Students are also assumed to have completed study in Mathematics at senior high school level or to have completed University Foundation Studies Mathematics at UWSCollege.

## English entry requirements

International students must satisfy one of the following language requirements:

- » IELTS 6.0 with a minimum of 5.5 in each sub band.
- » Completion of UWSCollege EAP III course with a 50% pass.
- » A 'C' result in the University Foundation Studies Academic English course.
- » A result in the UWSCollege English Placement Test at IELTS 6.0 equivalent.

## Entry into your Degree at UWS

Successful completion of the Diploma in Engineering gives you advanced standing of 80 credit points (first year study) in the Bachelor of Engineering degree at UWS.

## Course Start Dates

March, June and October  
Refer online at: [www.uwscollege.edu.au](http://www.uwscollege.edu.au) for specific course start dates.

## Course Fees

For more information on fees, refer online at: [www.uwscollege.edu.au](http://www.uwscollege.edu.au)

## Three-semester program (Standard)

### UWS Course Code: 7006

#### Key subjects

Mathematics C*
Physics*
Tertiary Study Skills*
Engineering Computing
Engineering and Design Concepts
Engineering Design and Construction Practice
Electrical Fundamentals
Fundamentals of Mechanics
Mathematics for Engineers 1
Mathematics for Engineers 2
Physics and Materials

\*No advanced standing at university will be granted for these subjects

## Two-semester program (Fast-track)

### New program in 2010

### UWS Course Code: 7010

#### Key subjects

Tertiary Study Skills*
Engineering Computing
Engineering and Design Concepts
Engineering Design and Construction Practice
Electrical Fundamentals
Fundamentals of Mechanics
Mathematics for Engineers 1
Mathematics for Engineers 2
Physics and Materials

\*No advanced standing at university will be granted for these subjects

For more detailed subject descriptions please visit: [www.uwscollege.edu.au](http://www.uwscollege.edu.au)

## UWS Degree programs

### Bachelor of Engineering

When you successfully complete your UWSCollege Diploma in Engineering, you can progress to second year of Bachelor of Engineering at UWS, which offers Engineering programs in:

- » Civil
- » Computer
- » Electrical
- » Environmental
- » Robotics and Mechatronics
- » Telecommunications

# Diploma in Information and Communications Technology



The Diploma in Information and Communications Technology provides a broad range of knowledge and skills to prepare you for second year university.

You can complete your Diploma in the standard three semesters, or fast-track your studies in a two-semester program. If you meet entry criteria, the Fast-track program allows you to complete one university-equivalent year in eight months.

## Academic entry requirements

Academic entry requirements vary according to country of origin. For country-specific entry criteria, please refer to pages 19–20 of this brochure. In general, entry is based on the successful completion of Australian Year 12 or equivalent or UWSCollege University Foundation Studies or equivalent, with a Grade Point Average of 6.0 or higher.

Students are assumed to have completed Mathematics at senior high school level or to have completed University Foundation Studies Mathematics at UWSCollege.

## English entry requirements

International students must satisfy one of the following language requirements:

- » IELTS 6.0 with a minimum of 5.5 in each sub band.
- » Completion of UWSCollege EAP III course with a 50% pass.
- » A 'C' result in the University Foundation Studies Academic English course.
- » A result in the UWSCollege English Placement Test at IELTS 6.0 equivalent.

## Entry into your Degree at UWS

Successful completion of the Diploma in Information and Communications Technology gives you advanced standing of 80 credit points (first year study) in the Bachelor of Computing, or Bachelor of Information and Communications Technology at UWS.

## Course Start Dates

March, June and October  
Refer online at: [www.uwscollege.edu.au](http://www.uwscollege.edu.au) for specific course start dates.

## Course Fees

For more information on fees, refer online at: [www.uwscollege.edu.au](http://www.uwscollege.edu.au)

## Three-semester program (Standard)

### UWS Course Code: 7005

#### Key subjects

Programming Design*
Statistics for Academic Purposes*
Tertiary Study Skills*
Computer Networking
Database Design and Development
Information Systems in Context
Object Oriented Analysis
Principles of Professional Communication 1
Programming Fundamentals
Statistical Decision Making
Systems Analysis and Design

\*No advanced standing at university will be granted for these subjects

## Two-semester program (Fast-track)

### UWS Course Code: 7004

#### Key subjects

Tertiary Study Skills*
Computer Networking
Database Design and Development
Information Systems in Context
Object Oriented Analysis
Principles of Professional Communication 1
Programming Fundamentals
Statistical Decision Making
Systems Analysis and Design

\*No advanced standing at university will be granted for these subjects

For more detailed subject descriptions please visit: [www.uwscollege.edu.au](http://www.uwscollege.edu.au)

## UWS Degree programs

### Bachelor of Computing

### Bachelor of Information and Communications Technology

When you successfully complete your Diploma in Information and Communications Technology at UWSCollege, you can progress to the second year of the Bachelor of Computing (Information Systems Key Program) or the Bachelor of Information and Communications Technology at the University of Western Sydney, which offers programs in:

### Bachelor of Computing

» Information Systems

### Bachelor of Information and Communications Technology

†For information on majors and sub-majors that are available for this degree please visit the UWS website at [www.uws.edu.au](http://www.uws.edu.au)

# Diploma in Science

The Diploma in Science prepares students for tertiary study in Science by providing important prerequisite knowledge in the areas of Chemistry and Mathematics, in addition to incorporating eight core Science units from the UWS Bachelor of Science undergraduate program.

You can complete your Diploma in the standard three semesters, or fast-track your studies in a two-semester program. If you meet entry criteria, the Fast-track program allows you to complete one university-equivalent year in eight months.

## Academic entry requirements

Academic entry requirements vary according to country of origin. For country-specific entry criteria, please refer to pages 19–20 of this brochure. In general, entry is based on the successful completion of Australian Year 12 or equivalent or UWS College University Foundation Studies or equivalent, with a Grade Point Average of 6.0 or higher.

Students are assumed to have completed study in Mathematics and Science at senior high school level.

## English entry requirements

International students must satisfy one of the following language requirements:

- » IELTS 6.0 with a minimum of 5.5 in each sub band.
- » Completion of UWS College EAP III course with a 50% pass.
- » A 'C' result in the University Foundation Studies Academic English course.
- » A result in the UWS College English Placement Test at IELTS 6.0 equivalent.

## Entry into your Degree at UWS

Successful completion of the Diploma in Science gives you advanced standing of 80 credit points (first year study) in the Bachelor of Science Degree at UWS in most key programs.

## Course Start Dates

March, June and October  
Refer online at: [www.uwscollge.edu.au](http://www.uwscollge.edu.au) for specific course start dates.

## Course Fees

For more information on fees, refer online at: [www.uwscollge.edu.au](http://www.uwscollge.edu.au)

## Three-semester program (Standard)

**UWS Course Code: 7003**

### Key subjects

Tertiary Study Skills*
Chemistry*
Mathematics B*
Biodiversity
Biometry
Cell Biology
Chemistry 1
Chemistry 2
Information Systems in Context
Physics 1
Professional Skills for Science

\*No advanced standing at university will be granted for these subjects

## Two-semester program (Fast-track)

**New program in 2010**

**UWS Course Code: 7009**

### Key subjects

Tertiary Study Skills*
Biodiversity
Biometry
Cell Biology
Chemistry 1
Chemistry 2
Information Systems in Context
Physics 1
Professional Skills for Science

\*No advanced standing at university will be granted for these subjects

For more detailed subject descriptions please visit: [www.uwscollge.edu.au](http://www.uwscollge.edu.au)

## UWS Degree programs

### Bachelor of Science

### Bachelor of Medical Science

When you successfully complete your UWS College Diploma in Science, you can progress to second year of a Bachelor of Science or the Bachelor of Medical Science at the University of Western Sydney, which offers programs in:

### Bachelor of Science

- » Biological Science
- » Biotechnology
- » Chemistry
- » General (No Key Program)
- » Plant Science

### Bachelor of Medical Science

- » Biomedical science
- » Medicinal chemistry
- » Human bioscience

# Diploma in Social Science



## New program in 2010

UWSCollege is offering a Diploma in Social Science from March 2010. When you successfully complete the Diploma in Social Science, you can progress to second year of a Bachelor of Social Science at UWS.

You can complete your Diploma in the standard three semesters, or fast-track your studies in a two-semester program. If you meet entry criteria, the Fast-track program allows you to complete one university-equivalent year in eight months.

### Academic entry requirements

Academic entry requirements vary according to country of origin. For country-specific entry criteria, please refer to pages 19–20 of this brochure. In general, entry is based on the successful completion of Australian Year 12 or equivalent or UWSCollege University Foundation Studies or equivalent, with a Grade Point Average of 6.0 or higher.

### English entry requirements

International students must satisfy one of the following language requirements:

- » IELTS 6.0 with a minimum of 5.5 in each sub band.
- » Completion of UWSCollege EAP III course with a 50% pass.
- » A 'C' result in the University Foundation Studies Academic English course.
- » A result in the UWSCollege English Placement Test at IELTS 6.0 equivalent.

### Entry into your Degree at UWS

Successful completion of the Diploma in Social Science gives you advanced standing of 80 credit points (first year study) in the Bachelor of Social Science Degree at UWS in most key programs.

### Course Start Dates

March, June and October  
Refer online at: [www.uwscollege.edu.au](http://www.uwscollege.edu.au) for specific course start dates.

### Course Fees

For more information on fees, refer online at: [www.uwscollege.edu.au](http://www.uwscollege.edu.au)

## Three-semester program (Standard)

### UWS Course Code: 7011

#### Key subjects

Academic English\*  
Cultural Perspectives\* OR  
Communication and Media\*  
Tertiary Study Skills\*  
Cultural and Social Geographies  
Geographies of Social Difference  
Inequalities and Difference  
Introduction to Criminology  
Organisations, Communities and Communication  
The Individual and Society  
Tourism and Society  
Understanding Society

\*No advanced standing at university will be granted for these subjects

## Two-semester program (Fast-track)

### UWS Course Code: 7012

#### Key subjects

Tertiary Study Skills\*  
Cultural and Social Geographies  
Geographies of Social Difference  
Inequalities and Difference  
Introduction to Criminology  
Organisations, Communities and Communication  
The Individual and Society  
Tourism and Society  
Understanding Society

\*No advanced standing at university will be granted for these subjects

For more detailed subject descriptions please visit: [www.uwscollege.edu.au](http://www.uwscollege.edu.au)

## UWS Degree programs

### Bachelor of Social Science

When you successfully complete your UWSCollege Diploma in Social Science, you can progress to second year of the Bachelor of Social Science at the University of Western Sydney, which offers programs in:

- » Child and Community Studies
- » Criminology and Criminal Justice
- » Geography and Urban Studies
- » Heritage and Tourism Studies
- » Peace and Development Studies
- » Sociology

# Diploma in Health Science

## New program in 2010

UWSCollege is offering a Diploma in Health Science from March 2010. When you successfully complete the Diploma in Health Science, you can progress to second year of a Bachelor of Health Science at UWS.

You can complete your Diploma in the standard three semesters, or fast-track your studies in a two-semester program. If you meet entry criteria, the Fast-track program allows you to complete one university-equivalent year in eight months.

### Academic entry requirements

Academic entry requirements vary according to country of origin. For country-specific entry criteria, please refer to pages 19–20 of this brochure. In general, entry is based on the successful completion of Australian Year 12 or equivalent or UWSCollege University Foundation Studies or equivalent, with a Grade Point Average of 6.0 or higher.

### English entry requirements

International students must satisfy one of the following language requirements:

- » IELTS 6.0 with a minimum of 5.5 in each sub band.
- » Completion of UWSCollege EAP III course with a 50% pass.
- » A 'C' result in the University Foundation Studies Academic English course.
- » A result in the UWSCollege English Placement Test at IELTS 6.0 equivalent.

### Entry into your Degree at UWS

Successful completion of the Diploma in Health Science gives you advanced standing of 80 credit points (first year study) in the Bachelor of Health Science at UWS.

### Course Start Dates

March, June and October  
Refer online at: [www.uwscollege.edu.au](http://www.uwscollege.edu.au) for specific course start dates.

### Course Fees

For more information on fees, refer online at: [www.uwscollege.edu.au](http://www.uwscollege.edu.au)

## Three-semester program (Standard)

### UWS Course Code: 7013

#### Key subjects

Academic English*
Science for Health Sciences*
Tertiary Study Skills*
Approaches to Health Promotion
Communication in Health
Foundations of Research and Evidence-Based Practice
Health Services Management
Introduction to Human Biology
Population Health and Society
Professional Health Competencies
Psychology and Health
Health Promotion OR Outdoor Recreation

\*No advanced standing at university will be granted for these subjects

## Two-semester program (Fast-track)

### UWS Course Code: 7014

#### Key subjects

Tertiary Study Skills*
Approaches to Health Promotion
Communication in Health
Foundations of Research and Evidence-Based Practice
Health Services Management
Introduction to Human Biology
Population Health and Society
Professional Health Competencies
Psychology and Health
Health Promotion OR Outdoor Recreation

\*No advanced standing at university will be granted for these subjects

For more detailed subject descriptions please visit: [www.uwscollege.edu.au](http://www.uwscollege.edu.au)

## UWS Degree programs

### Bachelor of Health Science

### Bachelor of Health Science (PDHPE)

When you successfully complete your UWSCollege Diploma in Health Science, you can progress to second year of the Bachelor of Health Science (Non Clinical) or the Bachelor of Health Science (PDHPE), at the University of Western Sydney, which offers programs in:

### Bachelor of Health Science

- » Health Promotion
- » Health Services Management
- » Therapeutic Recreation

### Bachelor of Health Science (PDHPE)

- » Personal Development, Health and Physical Education

# Diploma in Construction Management

## New program in 2010

UWSCollege is offering a Diploma in Construction Management from March 2010. When you successfully complete the Diploma in Construction Management, you can progress to second year of the Bachelor of Construction Management at UWS.

You can complete your Diploma in the standard three semesters, or fast-track your studies in a two-semester program. If you meet entry criteria, the Fast-track program allows you to complete one university-equivalent year in eight months.

### Academic entry requirements

Academic entry requirements vary according to country of origin. For country-specific entry criteria, please refer to pages 19–20 of this brochure. In general, entry is based on the successful completion of Australian Year 12 or equivalent or UWSCollege University Foundation Studies or equivalent, with a Grade Point Average of 6.0 or higher.

Students are assumed to have completed Mathematics at senior high school level or to have passed University Foundation Studies Mathematics at UWSCollege.

### English entry requirements

International students must satisfy one of the following language requirements:

- » IELTS 6.0 with a minimum of 5.5 in each sub band.
- » Completion of UWSCollege EAP III course with a 50% pass.
- » A 'C' result in the University Foundation Studies Academic English course.
- » A result in the UWSCollege English Placement Test at IELTS 6.0 equivalent.

### Entry into your Degree at UWS

Successful completion of the Diploma in Construction Management gives you advanced standing of 80 credit points (first year study) in the Bachelor of Construction Management at UWS.

### Course Start Dates

March, June and October  
Refer online at: [www.uwscollege.edu.au](http://www.uwscollege.edu.au) for specific course start dates.

### Course Fees

For more information on fees, refer online at: [www.uwscollege.edu.au](http://www.uwscollege.edu.au)

## Three-semester program (Standard)

### UWS Course Code: 7015

#### Key subjects

Mathematics B*
Physics*
Tertiary Study Skills*
Accounting Information for Managers
Building 1
Building 2
Engineering and Design Concepts
Engineering Design and Construction Practice
Introduction to Business Law
Management Dynamics
Physics and Materials

\*No advanced standing at university will be granted for these subjects

## Two-semester program (Fast-track)

### UWS Course Code: 7016

#### Key subjects

Tertiary Study Skills*
Accounting Information for Managers
Building 1
Building 2
Engineering and Design Concepts
Engineering Design and Construction Practice
Introduction to Business Law
Management Dynamics
Physics and Materials

\*No advanced standing at university will be granted for these subjects

For more detailed subject descriptions please visit: [www.uwscollege.edu.au](http://www.uwscollege.edu.au)

## UWS Degree programs

### Bachelor of Construction Management

When you successfully complete your UWSCollege Diploma in Construction Management, you can progress to the second year of the Bachelor of Construction Management at the University of Western Sydney.

# UWSCollege Academic Pathway Programs

## Country-specific entry requirements (indicative only)

Country	Qualification	University Foundation Studies	University Foundation Studies	University Foundation Studies	Diploma		Diploma		
		Three semesters (Extended)	Two semesters (Standard)	One semester* (Accelerated)	Three semesters (12 months) (Standard)		Two semesters (8 months) (Fast Track)		
Open	International Baccalaureate		Aggregate mark 19	Aggregate mark 20	Aggregate mark 21		Aggregate mark 22		
Australia	Year 11	Substantial grades 60+	Excellent grades 70+						
	HSC		ATAR results plus questionnaire	ATAR results plus questionnaire	ATAR results plus questionnaire		ATAR results plus questionnaire		
Bangladesh	HSC		50% average (GPA 2.5)	55% average (GPA 3.0)	55% average (GPA 3.0)		65% average (GPA 3.5)		
	GCE O Levels		3 passes						
	GCE A Levels			C grade in one subject and one AS level pass	C grade in one subject and one AS level pass		One C and one D		
China	Senior Middle School Year 2	Senior Middle School Year 2 70%	Senior Middle School Year 2 80%	Senior Middle School Year 3 60%	Senior Middle School Year 3 60%				
	Gao Kao				450	450	480		
Colombia	Bachillerato		60% average	65% average	65% average		68% average		
Egypt	General Secondary School Certificate		50% average						
	Completion of first year university or higher institutes			50% average	60% average		65% average		
Fiji	Form 6	50% average	60% average						
	Form 7		50% average	65% average	65% average		68% average		
Hong Kong	HKCEE	Completion of O Levels	Pass in three subjects at O Level with minimum D in two subjects						
	HKALE			2 AS level passes	1A level and 1AS level pass		1A level + 2 AS level passes		
India	AISSC	4	4.5	5	5	5.5	5.5	6	
	ISC	40	45	48	48	50	50	55	
	HSC	45	50	55	55	58	58	60	
Indonesia	SMU 2	Grade 5.0 average	Grade 7.0 average						
	SMU 3		Grade 6.0+ average	Grade 6.5+ average	Grade 6.5+ average		Grade 7.0 average		
Iran	3 year High School Diploma		50% average						
	4 year High School Diploma			50% average	50% average		Successful completion of National Entrance Exam		
Japan	Year 11	GPA 2.5	GPA 3.5						
	Kotogakko Certificate		GPA 2.0	GPA 2.5	GPA 2.5		GPA 3.0		
Jordan	Middle East SLC	80	81	82	82	84	84	85	
Kenya	KCSE	55	60	65	65	68	68	72	
	GCE O Levels	Three passes		Four passes					
	GCE A Levels			One C grade and a AS level	One C grade and a AS level	One C grade and one D grade	One C grade and one D grade	Two C grades	
Korea	Senior High School Year 2	GPA 2.5	GPA 3.5						
	Senior High School Year 3		GPA 2.0	GPA 2.5	GPA 2.5		GPA 3.0		

Business and Commerce  
ICT, Construction Management  
Health Science  
Social Science

Engineering\*\*  
Science

Business and Commerce  
ICT, Construction Management  
Health Science  
Social Science

Engineering\*\*  
Science

Country	Qualification	University Foundation Studies	University Foundation Studies	University Foundation Studies	Diploma		Diploma	
		Three semesters (Extended)	Two semesters (Standard)	One semester* (Accelerated)	Three semesters (12 months) (Standard)		Two semesters (8 months) (Fast Track)	
Kuwait	Middle East SLC	80	81	82	82	84	84	85
Lebanon	Baccalaureat General		10 average	11 average	11.5 average		12 average	
Lybia	GSS Leaving Certificate	80	81	82	82	84	84	86
Nepal	Proficiency Certificate (10+2)		50% average	55% average	55% average		60% average	
	HSC		50% average	55% average	55% average		60% average	
Pakistan	Year 11	50% average						
	HSC		50% average	55% average	55% average		60% average	
Saudi Arabia	Middle East SLC	80	81	82	82	84	84	85
Singapore	GCE O-Levels	Grade 5 in two subjects	Grade 5 in four subjects					
	GCE A-Levels			C grade in one subject and one AS Level pass	C grade in one subject and one AS Level pass		One C and one D	
Sri Lanka	Sri Lankan O Levels plus 1 year A Levels	Two passes	Three passes					
	Sri Lankan A Levels		Two passes	Three passes	Three passes	Three passes	Three passes at least one C grade	Three passes at least one C grade
	GCE O Levels plus 1 year A Levels	Two passes	Three passes					
	GCE A Levels			Two passes	Two passes	Two passes	Two passes at least one C grade	Three passes at least one C grade
Taiwan	Senior High School Year 2	50% (D grade) average	60% (C grade) average					
	Senior High School Leaving Certificate		50% (D grade) average	65% (C grade) average	65% (C grade) average		68% (B grade) average	
Thailand	Matayom 5	Pass	On application – superior grades					
	Matayom 6		GPA 2.0	GPA 2.3	GPA 2.3		GPA 2.7	
Turkey	High School Diploma	3.75	4	4.5	4.5	5	5	6
UAE	Middle East SLC	80	81	82	82	84	84	85
Vietnam	Year 11	Grade 5+ average	Grade 7+ average					
	Senior High School Year 12		Grade 5+ average	Grade 6+ average	Grade 6+ average		Yr 12 – Grade 7 average or completion of 1st year university	
Zimbabwe	GCE O-Levels	1 pass	3 passes					
	GCE A-Levels			C grade in one subject and one AS level pass	C grade in one subject and one AS level pass		One C and one D	

- If you do not meet the above entry requirements for your country, or if your country is not listed, please email us for assistance at [pathwaystouni@uwscollge.edu.au](mailto:pathwaystouni@uwscollge.edu.au).
- All students wishing to complete science or computing at University Foundation Studies level must have studied mathematics in senior high school.
- English entry requirements also apply. Please refer to the course specific information in this brochure for further details.

\* International students may only complete one semester of the two semester University Foundation Studies if they meet these entry requirements.

\*\* Mathematics and preferably Physics subjects completed at HSC level for Engineering students.

# 2010 Program Dates

## English Language Programs

Course	Start Dates	Finish Dates	Duration
<b>Academic English for Tertiary Studies</b> AEEP, EAP I, EAP II, EAP III	8 February 2010	16 April 2010	10 weeks
	19 April 2010	25 June 2010	*11 weeks
	12 July 2010	17 September 2010	
	20 September 2010	26 November 2010	
	29 November 2010*	11 February 2011*	
EAP III only – students need suitable English test results to enrol in this course	17 May 2010	23 July 2010	
<b>Advanced Academic English Skills</b> Module A: Reading and Writing	4 January 2010	12 February 2010	6 weeks
	17 May 2010	25 June 2010	
	7 June 2010	16 July 2010	
	18 October 2010	26 November 2010	
	4 January 2011	11 February 2011	
<b>Advanced Academic English Skills</b> Module B: Listening and Speaking	4 January 2010	29 January 2010	1–4 weeks (can join any week)
	19 April 2010	14 May 2010	
	29 November 2010	24 December 2010	
	4 January 2011	28 January 2011	
<b>Communicating in English</b> (General English)	8 February 2010	16 April 2010	Students can enter this course every Monday
	19 April 2010	25 June 2010	
	12 July 2010	17 September 2010	
	20 September 2010	26 November 2010	
	29 November 2010*	11 February 2011*	

\* Christmas break is from 24 December 2010 to 4 January 2011.

## Academic Pathway Programs

Course	Start Dates	Finish Dates	Duration
<b>University Foundation Studies</b> Three-semester program (Extended)	1 March 2010	4 February 2011	12 months
<b>University Foundation Studies</b> Two-semester program (Standard)	1 March 2010	11 October 2010	8 months
	28 June 2010	4 February 2011	
	25 October 2010	10 June 2011	
<b>University Foundation Studies</b> One-semester program (Accelerated)	1 March 2010	11 June 2010	4 months
	28 June 2010	11 October 2010	
	25 October 2010	4 February 2011	
<b>Diploma Program</b> Three-semester program (Standard)	1 March 2010	4 February 2011	12 months
	28 June 2010	10 June 2011	
	25 October 2010	10 October 2011	
<b>Diploma Program</b> Two-semester program (Fast-track)	1 March 2010	11 October 2010	8 months
	28 June 2010	4 February 2011	
	25 October 2010	10 June 2011	
<b>University of Western Sydney</b>	1 March 2010	28 June 2010	Varies according to course chosen
	26 July 2010	29 November 2010	

These dates may vary. Please check with UWSCollege to ensure that your preferred course has an intake when you wish to start.

**Course fees** – Tuition fees for each course can be found at the UWSCollege website at [www.uwscollege.edu.au](http://www.uwscollege.edu.au)

# Important information

## Course Fees

Commencing students will be provided with an 'Offer of Admission', listing the fees to be paid. All required fees must be paid in advance for each semester.

UWSCollege will honour the fee stated in an Offer of Admission provided you enrol by the date specified in the Offer of Admission.

## Refund Policy

If you require a refund of tuition fees, it is important that UWSCollege is notified in writing. A copy of the Confirmation of Enrolment (CoE), together with the mailing address to which the refund is to be sent, must also be provided. Applications for refunds should include all relevant information to enable payment, such as bank name, bank account details, address of bank, and name of account holder. Refunds will be paid, or requests for refund responded to, within four weeks of lodging a request in accordance of the ESOS Act and National Code. Payment of refunds will be made only in Australian dollars.

Please note that enrolment, accommodation placement and airport pick-up expenses are not refundable.

For more information about fees and refunds including a copy of the Fees and Refund Policy please refer to the UWSCollege website at [www.uwscollege.edu.au](http://www.uwscollege.edu.au)

## Visa Information

A student visa of adequate subclass is required for study of three months of duration or more. For detailed and easy to follow information about student visa subclass appropriate for your course of study, please check the website of the Department of Immigration and Citizenship (DIAC) at [www.immi.gov.au/students/](http://www.immi.gov.au/students/)

## Visa Conditions

1. Each student visa is issued with an expiry date. You must extend your current visa, apply for a new visa subclass or leave Australia before your current visa finishes.
2. A student visa does not normally permit part time study. You must be a full-time student.
3. It is the responsibility of the visa holder to be aware of and fulfil the conditions of their visa. Your student visa conditions are detailed on the visa label in your passport or visa grant letter. For more information please refer to the DIAC website at [www.immi.gov.au/students/](http://www.immi.gov.au/students/)
4. Each educational institution is obliged by law to monitor and to report to DIAC, students who show an unsatisfactory progress in their studies and unsatisfactory attendance.
5. It is a condition of your student visa that you inform UWSCollege in writing of any changes to your residential and mailing addresses within 7 days of the change.

## Permission to work

1. Most student visas issued after the 26 April 2008 contain permission to work. Check your visa label/grant letter.
2. Normally, you and your dependants are permitted to work up to 20 hours per week while your course of study is in session. You may work full-time only during holiday periods listed on the current UWSCollege Calendar.
3. For authoritative information about working while studying please refer to the DIAC website at [www.immi.gov.au/students/](http://www.immi.gov.au/students/)

## Overseas Student Health Cover (OSHC)

To obtain a student visa you must purchase a special form of health insurance called Overseas Student Health Cover (OSHC), and provide evidence of that purchase to DIAC. Apart from some national health insurance products available to citizens of Norway and Sweden, no other health insurance is accepted as a substitute for OSHC.

You should indicate your preference for purchasing OSHC on your UWSCollege application form.

In general, OSHC provides the same level of health insurance to international students as Medicare. Medicare is the Australian Government health insurance provided to Australian citizens. For more details about this insurance go to <http://studyinaustralia.gov.au/Sia/en/StudyCosts/OSHC.htm>

Fortunately, most everyday health services are covered by OSHC, but it is important to know that not all health services are covered. For example, OSHC does not cover dental, optical or physiotherapy treatments and services. If you know you will need particular health care services that are not covered by OSHC, be prepared to pay for these services, and/or seek additional insurance.

# Package your international visa

There are currently several sub-classes of student visa that cover the whole study program, or particular courses.

To make studying in Australia less expensive and less complicated, you can 'package' your visa to cover all of your English courses and academic studies. This means that whether you're enrolling in two courses, or studying a UWSCollege Pathway course and then a degree at the University of Western Sydney, a single visa will cover it all.

## UWSCollege Pathway Package

A UWSCollege Pathway Package will simplify the administrative requirements of your visa.

All of our Academic courses can be packaged with an English Language course. Our University Foundation Studies courses can also be packaged with a Diploma course.

The following combinations of UWSCollege courses can be covered by a single visa.

1. English + University Foundation Studies
2. English + Diploma
3. English + University Foundation Studies + Diploma
4. University Foundation Studies + Diploma

To apply for a UWSCollege Package, please complete a UWS International Student Undergraduate Application Form found at [www.uws.edu.au/international/downloads\\_page](http://www.uws.edu.au/international/downloads_page). This form is also available on page 25 of this brochure, and from your agent.

## UWSCollege + University of Western Sydney Pathway Package

Courses at UWSCollege and courses at the University of Western Sydney can be packaged together in a single visa.

The following UWSCollege and UWS courses can be packaged together for your visa:

1. University Foundation Studies + Undergraduate Degree
2. Diploma + Undergraduate Degree
3. University Foundation Studies + Diploma + Undergraduate Degree

If you do not meet our English Language requirement, these packages can also be offered with a UWSCollege English Language course.

4. English + Undergraduate Degree
5. English + Postgraduate Degree

To apply for a UWSCollege + UWS Pathway Package, you need to complete a UWS International Student Undergraduate Application Form found at [www.uws.edu.au/international/downloads\\_page](http://www.uws.edu.au/international/downloads_page). This form is also available on page 25 of this brochure, and from your agent.

## UWS deposit

To secure a place at the University of Western Sydney, you must pay UWS a deposit of AUD\$2,000 when you pay your UWSCollege course tuition fees. UWS will hold the AUD\$2,000 deposit until your university studies commence. The AUD\$2,000 deposit will then be deducted from your first semester fees at UWS.

You will receive a Confirmation of Enrolment (CoE) letter for the UWSCollege course, and a CoE letter for the UWS course.



# How to apply

## Step 1: Application

**COMPLETE** - A UWS International Student Undergraduate Application Form

Which you will find at [www.uws.edu.au/international/admissions](http://www.uws.edu.au/international/admissions)

The form is also available on page 25 of this brochure, or from your agent.

**If you are applying for advanced standing or academic credit:**

Download the Advanced Standing Application Form at [www.uws.edu.au/forms](http://www.uws.edu.au/forms)

**ATTACH - Along with your application form, ensure that you also:**

1. Attach certified copies of your English Proficiency Level
2. Attach certified copies of your Academic Qualifications
3. Attach certified copies of your Birth Certificate or Passport

**READ** - and understand UWSCollege policies at [www.uwscollege.edu.au](http://www.uwscollege.edu.au)

**SIGN** - and date the Declaration

**SEND** - the application to:

UWS International Admissions  
University of Western Sydney  
Building ES, Parramatta Campus  
Locked Bag 1797  
Penrith South DC, NSW 1797  
AUSTRALIA

**Email:**

[chinaadmissions@uws.edu.au](mailto:chinaadmissions@uws.edu.au)  
(Only China)

[India-admissions@uws.edu.au](mailto:India-admissions@uws.edu.au)  
(Only India)

[Int1-admissions@uws.edu.au](mailto:Int1-admissions@uws.edu.au)  
(Africa, North and South America, Australia, Europe, Canada)

[Int2-admissions@uws.edu.au](mailto:Int2-admissions@uws.edu.au)  
(All other countries)

**Fax:** +61 2 9685 9314

## Step 2: Offer of Admission

You will be advised in writing of the outcome of your application.

**Offer Pack**

Successful applicants will receive a personalised Offer Pack, including an 'Offer of Admission' that states the course offered, tuition fees, costs for compulsory Overseas Student Health Cover (OSHC), orientation details, course commencement dates and other important information.

An 'Offer Acceptance Agreement' form and pre-departure information is included in your Offer Pack.

**Conditional offer**

If you apply for a formal course of study at UWSCollege but are waiting to receive results of current Academic or English studies, UWSCollege may make you a 'Conditional Offer of Admission'. When you receive the final results for your current studies, send certified copies to UWS International Admissions and we can then send you a final Offer of Admission.

## Step 3: Acceptance

To accept your Offer of Admission, you must pay the total fees listed in the Offer of Admission letter, and fax or post the following documents to UWS International Admissions:

- » Completed 'Offer Acceptance Agreement' form
- » Proof of payment (include the UWS Student ID Number quoted on the 'Offer of Admission' with your payment)
- » Copy of Pre-Visa Approval (PVA) letter from the Australian Embassy. (This is only applicable to overseas students from countries that require a PVA.)
- » 'Confirmation of Enrolment (CoE) Request and Payment Advice' form
- » Homestay accommodation/ airport pickup form, if required.

A Confirmation of Enrolment (CoE) letter will be sent to you, confirming details of your course enrolment.

**Payment**

Your payment must be made:

- » payable to the University of Western Sydney
- » in Australian dollars
- » to include your name and Student ID number.

The following options are available for commencing students to make payment:

- » payment by credit card
- » telegraphic Transfer from an overseas account, or Direct deposit bank transfer in Australia, to UWS. A copy of the transfer must be attached to your Acceptance form. (UWS bank account details are provided with your Letter of Offer.)
- » Australian Bank Cheque made to: The University of Western Sydney. (The cheque must be attached to your acceptance form.)

## Step 4: Student Visa

**Confirmation of Enrolment**

A Confirmation of Enrolment (CoE) letter will be sent to you, confirming details of your course enrolment.

**Student Visa**

You must obtain a student visa before leaving your home country. The Australian Diplomatic Mission in your home country will explain visa requirements for Australia. More information is available from the Department of Immigration and Citizenship (DIAC) at [www.immi.gov.au](http://www.immi.gov.au).

# International Student UNDERGRADUATE Application Form



- » A non-refundable application fee of AUD\$100 must be submitted with this form.
- » All fields must be completed in order for this application to proceed for assessment.
- » Please print clearly in BLOCK LETTERS

Do not use this form if:

- » you are a citizen of Australia or New Zealand or hold a permanent resident visa for Australia
- » you are an international student completing an Australian high school qualification. You will need to apply through the NSW Universities Admissions Centre (UAC) [www.uac.edu.au](http://www.uac.edu.au)

**UWS staff use only**

Indicate at which event this application was collected:

Application fee waiver granted by:

## Section A: Your application

Country of Citizenship (as stated on your passport)

Country of Birth

Country of Permanent Residence

Passport Number

Are you currently studying in Australia? No  Yes

If YES, please state your visa type

Expiry date /
/

Have you previously applied to UWS? No  Yes

Student Number

Name of Course

Are you a current UWS student? No  Yes

**i** We will contact you by email, post or telephone. However, the UWS preferred method of communication to you is via EMAIL to provide you with information relevant to your application such as updates, coming events, enrolment instructions and orientation activities.

**i** Your application cannot be processed without your personal email address. Please DO NOT substitute your representative's email address here.

**Email address**

## Section B: Personal details

Print your details as they appear in your passport

Title Dr  Mr  Mrs  Ms  Miss

Gender Male  Female

Family Name

Given Names

Preferred Name

Date of Birth /
/

**Student address details in Australia**  
*To be supplied if you are currently living in Australia*

Street address

City  State  Postcode

Telephone

Mobile

**Student address details in home country (essential)**  
*This is your permanent address in your home country*

Street address

City  Postcode

Country

Telephone

Mobile

Fax

**Representative contact details (if applicable)**

Representative name

Country

Email

Representative stamp

**i** If you apply through a representative, you should ensure that your representative is registered with UWS to avoid delays in your application. For details of representatives in your country go to [www.uws.edu.au/international/representatives\\_worldwide](http://www.uws.edu.au/international/representatives_worldwide)

## Section C: Course preferences

You may list two courses in order of preference for assessment by UWS International Admissions. If you do not meet the requirements for the course of your first choice, your second preference will then be assessed. Before completing this section please refer to the International Undergraduate Prospectus, Fee Schedule or [www.uws.edu.au/international/course\\_fees](http://www.uws.edu.au/international/course_fees) for the details requested below.

**Preference ONE** Course Name  Campus\*

Code     Intake^   Year

**Preference TWO** Course Name  Campus\*

Code     Intake^   Year

\*Campus codes: BA Bankstown; BL Blacktown; CA Campbelltown; HA Hawkesbury; PA Parramatta; PE Penrith

^Intake codes: FEB Autumn session (February); JUL Spring session (July)

## Section D: Academic qualifications

Certified copies of academic qualifications indicating grades and awards received MUST be submitted with this application. If qualifications are in a language other than English, please also supply certified translated copies – see back of application form for details. Your application cannot proceed for assessment without these documents. Please note, a collection of result slips and/or downloadable web transcripts will not be accepted.

### Current academic study (course yet to complete)

Are you currently enrolled in/studying an academic qualification? No  Yes

If YES, please complete the details below

Is this a qualification for (please tick appropriate box):

Secondary (high school) or  Post-secondary (tertiary studies)

Date commenced   /   /

Name of qualification/award (eg Bachelor of Business)  Duration

School/institution

Country/state

Expected date of completion   /   /

Please submit your academic transcripts for every session and year you have studied in the course above with this application. Once you have completed the course, you will need to submit your final completion certificate or graduation award to UWS International admissions.

### Previous academic studies

Include details of all your previous academic qualifications. Please list your most recent qualifications first.

1. Date commenced   /   /

Name of qualification/award  Duration

School/institution  Country/state

Date of completion   /   /

Secondary (high school) or  Post-secondary (tertiary studies)

2. Date commenced   /   /

Name of qualification/award  Duration

School/institution  Country/state

Date of completion   /   /

Secondary (high school) or  Post-secondary (tertiary studies)

## Section E: English language proficiency

You must submit proof of your English language proficiency with this application.

Is English your first language?

Yes  No, my first language is

Please indicate which of the following applies to you:

I have completed/I intend to sit an English language proficiency test (IELTS/TOEFL). You must submit a certified copy of your IELTS or TOEFL results. Results will only be considered if they have been taken within two years from the time you commence study at UWS.

Date of IELTS/TOEFL test sat or to be taken:

/   /

Result (if known):

IELTS: Overall Score

Reading  Listening  Writing  Speaking

TOEFL:

TOEFL score  + TWE (Test of Written English) score

I intend to study an English language pathway program at UWSCollege. Please complete the following section F.

I have been studying in Australia or in a country where English is an official language. If you are, or have been, studying in Australia, UWS will consider studies undertaken within the past two years in assessing English language proficiency.

Please tick the qualification you have completed or are currently studying.

- Senior secondary or year 12 qualification (eg HSC)
- University pathway program (eg UWSCollege)
- Tertiary study in Australia (eg Bachelor or Diploma studies)
- Secondary or tertiary study in a country where English is an official language
- Other

Name of course

Name of institution

Country  Duration

Start date   /   /

Completion date   /   /

If you do not meet UWS English language requirements, you may automatically be considered for an English language pathway program at UWSCollege. If this is the case, you will be given a package offer from UWS and UWSCollege.

Please note, for visa application purposes, the Australian Government may require proof of English proficiency and may only accept IELTS. For more information please refer [www.immi.gov.au/students](http://www.immi.gov.au/students)

## Section F: Application for English language and academic pathway programs at UWSCollege

Complete this section if you are also applying to study an academic pathway program and/or English Language pathway program at UWSCollege before your study at UWS. For details of fees, courses and start dates please refer to [www.uwscollege.edu.au](http://www.uwscollege.edu.au)

### Academic pathway program selection:

#### University Foundation Studies

- 3 semester program  Extended
- 2 semester program  Standard
- 1 semester program  Accelerated
- Please select a stream:
- Arts – for students wishing to study Arts, Humanities or Education
- Business
- Computing
- Nursing
- Science – for students wishing to study Science or Engineering

#### Diploma Programs

- 2 semesters  3 semesters

Diploma name

When do you want to start your academic pathway program?

- March  June  October Year

### English language pathway program selection:

The duration of your English course depends on your English level. All students without an official English test result (eg IELTS) are tested on arrival at the College.

#### Academic English for Tertiary Studies

- EAP How many weeks?

#### Advanced Academic English Skills

- Module A: Reading and Writing (6 weeks)
- Module B: Listening and Speaking (4 weeks)
- Module A and B (10 weeks)
- Other (please specify)

When do you want to start your English course?

 /  / 

## Section G: Academic credit/advanced standing for previous study

Do you wish to apply for academic credit or advanced standing from previous study?

- Yes  No  Unknown

Please download the Advanced Standing Application form at [www.uws.edu.au/international/credit.html](http://www.uws.edu.au/international/credit.html) You must include this form and certified documentation (as advised on the form) with your application.

## Section H: Scholarships

Have you been granted a scholarship to undertake your proposed studies? If YES, please provide full details.

- Yes  No

Name of award  Duration

Granting institution/funding body

## Section I: Application fee payment

The application fee of AUD\$100 has been paid by (please tick one):

- Internet payment Receipt no: \_\_\_\_\_ (Internet payment can be made at: <http://ipay.uws.edu.au/intro.asp>)

- Telegraphic transfer from an overseas account or bank transfer in Australia. A copy of the transfer must be attached to this application form.

- Bankdraft/money order
- Account name: University of Western Sydney  
BSB number: 062000  
Account number: 13434939  
Bank details: Commonwealth Bank, 48 Martin Place, Sydney NSW 2000 Australia.  
Swift code: CTBAAU2S

- Credit card I authorise the deduction of AUD\$100 application fee from the following credit card account (please tick):

- Visa  Mastercard (or Eurocard)

Credit card number

Expiry Date  /

Cardholder's Name

Cardholder's signature

Email

Date

 /  / 

Student's Name

SID: (office use only)

**APPLICATION FEE WAIVED FOR 2010**



Section J: Declaration and signature

- 1 I wish to be considered for entry to the course listed above, and declare that all the information submitted on this application form is correct and complete.
2 I authorise the University of Western Sydney to obtain official records from any educational institution previously attended by me.
3 I clearly understand and accept that enrolment in the University of Western Sydney will require compliance with the provisions established by the Australian Government for fee-paying overseas students, which include the following:
3A temporary entry to Australia, if granted, will be for study purposes only
3B to be accepted to study at the University of Western Sydney, I must have at least the minimum academic and English language requirements for the course
3C I will be permitted to continue my study in Australia only if I make satisfactory progress in my course
3D I undertake to inform the University of my Australian residential address and telephone number at enrolment. I will advise the University of any changes to these details while enrolled at the University of Western Sydney
3E I am to return home on the completion of my study or at the expiration of my temporary entry permit, and I understand that temporary entry as a student confers no right of permanent residence in Australia at a later date.

- 4 I undertake to pay the prescribed tuition fee for which I am liable, and am aware that failure to pay the charge when it becomes due means that I will not be permitted further temporary stay in Australia to pursue the studies which attracted the charge.
5 I understand I will be required to pay compulsory school fees for any children accompanying me to Australia who are aged between 6 and 15 years.
6 I understand that the University of Western Sydney reserves the right to vary any decision regarding admission or enrolment made on the basis of incorrect or incomplete information.
7 Should I be found ineligible for admission to either of the courses nominated on the front of this application, I authorise UWS to assess my eligibility for a university pathway course.
8 The information provided by me to the University of Western Sydney may be made available to Commonwealth and State agencies, pursuant to obligations under the ESOS Act 2000 and National Code. http://aei.gov.au/AEI/ESOS/NationalCodeOfPractice2007/National\_Code\_2007\_pdf.pdf
9 FEES For information regarding Fees please refer to our website at www.uws.edu.au/international/course\_fees
10 REFUND POLICY For information regarding the Refund Policy please refer to our website at www.uws.edu.au/international/feepol

I have read and understood the above conditions and accept them fully.

Signature of applicant (not agent)

[Signature line]

Date DD/MM/YYYY

Parent/Guardian signature of applicant (for students under the age of 18 at time of application, the signature of a parent or guardian is required)

[Signature line]

Date DD/MM/YYYY

Section K: Have you ...

- provided your email address and phone number on the front of this application
attached certified copies of ALL required documentation
attached English translations of ALL required documentation
signed the declaration
submitted payment of the non-refundable AUD\$100 application fee?

Certification of documentation

Documents can be certified by any of the following:

- a UWS International Officer
a contracted agent of UWS
a Student Centre Officer at UWS
the Administration office or official Records Department of the institution which originally issued the document/s
an Australian Overseas Diplomatic Mission
a Bank Manager/Senior Police Officer (Australia only)
a Solicitor/Attorney/Notary
a Justice of the Peace

The Certifying Officer must print 'this is a true copy of the original document sighted by me'. They should also record their name, contact address, telephone number, profession or occupation or organisation, date verified and then sign the document. The Certifying Officer should include the official stamp or seal of the certifier's organisation on the copy, if the organisation has such a stamp.

Warning: It is an offence to submit fraudulent documentation in support of an application. Where fraudulent documents are detected the application will be rejected; any offer of enrolment will be withdrawn and any students already studying at UWS will have their enrolment cancelled. The matter may be reported to ICAC, the police, and DIAC.

Section L: How did you hear about UWS?

- Agent
Education institution
Education exhibition/interview program
Family/Friend
Australian Embassy/High Commission
Advertisement
Other, please specify

Lodging your application

Please forward your application to:

UWS International Admissions
University of Western Sydney
Building ES, Parramatta campus
Locked Bag 1797
Penrith South DC NSW
AUSTRALIA

Please note:

- Satisfying minimum entry requirements does not guarantee admission.
You will be advised by mail of the result of this application as soon as possible.

Students with disabilities

If you need extra help due to a disability while you are studying at the University, please provide a brief statement outlining your needs on a separate piece of paper. This information will be confidential and will not affect your admission to the area of study for which you are applying.

# Location



UWSCollege is located on two campuses at UWSCollege Nirimba, Quakers Hill, and at UWSCollege Westmead.

### Academic Pathway Programs

UWSCollege Academic Pathway Programs are presented at the UWSCollege Nirimba Campus at Quakers Hill. The campus is approximately 50 minutes drive from Sydney and the airport, and is well-served by public transport.

### English Language Programs

UWSCollege English Language Programs are presented at the UWSCollege Westmead Campus. This campus is approximately 30 minutes drive from the CBD and four minutes from Parramatta. The campus is well-served by public transport.



**UWS International**  
University of Western Sydney  
Locked Bag 1797  
Penrith South DC NSW 1797 Australia

**Course Information Centre**  
Telephone: +61 2 9852 5499  
Email: [internationalstudy@uws.edu.au](mailto:internationalstudy@uws.edu.au)  
[www.uws.edu.au/international](http://www.uws.edu.au/international)

## **UWSCollege Westmead Campus**

> for UWSCollege English Language Programs

### **In person**

**UWSCOLLEGE WESTMEAD**  
St Vincent's Building J  
158-160 Hawkesbury Road  
Westmead  
New South Wales 2145  
Australia

Tel: +61 2 9685 9785  
Fax: +61 2 9685 9700  
Email: [studyenglish@uws.edu.au](mailto:studyenglish@uws.edu.au)

### **Postal**

**UWSCOLLEGE WESTMEAD**  
PO Box 406  
Westmead  
New South Wales 2145  
Australia

## **UWSCollege Nirimba Education Precinct**

> for UWSCollege Academic Pathway Programs

### **In person**

**UWSCOLLEGE NIRIMBA**  
Eastern Road  
Quakers Hill  
New South Wales 2763  
Australia

Tel: +61 2 9852 4488  
Fax: +61 2 9852 4480  
Email: [pathwaystouni@uwscollege.edu.au](mailto:pathwaystouni@uwscollege.edu.au)

### **Postal**

**UWSCOLLEGE NIRIMBA**  
PO Box 224  
Quakers Hill  
New South Wales 2763  
Australia

[www.uwscollege.edu.au](http://www.uwscollege.edu.au)