



THE UNIVERSITY OF
WESTERN AUSTRALIA
Achieving International Excellence

The University of Western Australia

Study Abroad





The UWA campus is only five minutes drive away from the centre of Perth and Kings Park



KINGS PARK

PERTH

Capital city of Western Australia

Population - 1.5 million

Modern and sophisticated

Fourth largest city in Australia

Mediterranean climate

Great shopping and night life

Accessible public transport system

THE PERFECT ENVIRONMENT

Eight hours of sunshine daily

Lots of water

- Swan River and Indian Ocean

Pleasant warm summer, mild winter

Healthy outdoors lifestyle





PERTH CITY

Contents

| | |
|--|-----------|
| The Study Abroad Program | 2 |
| UWA: Fast Facts | 3 |
| The Academic Program | 4 |
| Study Opportunities | 6 |
| A Satisfying Academic Experience | 10 |
| Teaching and learning | |
| Assessment | |
| Academic Transcript | |
| Grading Scale | |
| Academic Support | |
| How do I apply? | 4 |
| Student Life | 6 |
| Orientation | |
| UWA Campus - the place to be seen | |
| Clubs and Societies | |
| Sporting Life - UWA Sports | |
| Admission Requirements | 12 |
| Student Services | 20 |
| Counselling Service | |
| Learning, Language and Research Skills (LL&RS) | |
| Disability Program | |
| Careers Centre | |
| Medical Centre | |
| Housing Office (see information on Accommodation) | |
| Accommodation | 22 |
| Residential Colleges (On Campus Housing) | |
| Off Campus Housing | |
| Living & Studying | 25 |
| What does it cost to study at UWA? | |
| Overseas Student Health Cover | |
| Do I need a visa? How do I apply for a student visa? | |
| Cost of Living | |
| Student Exchange Program | 26 |
| Perth | 26 |
| Albany Centre | 31 |
| Western Australia | 34 |
| Useful Websites | 36 |

Study Abroad Program

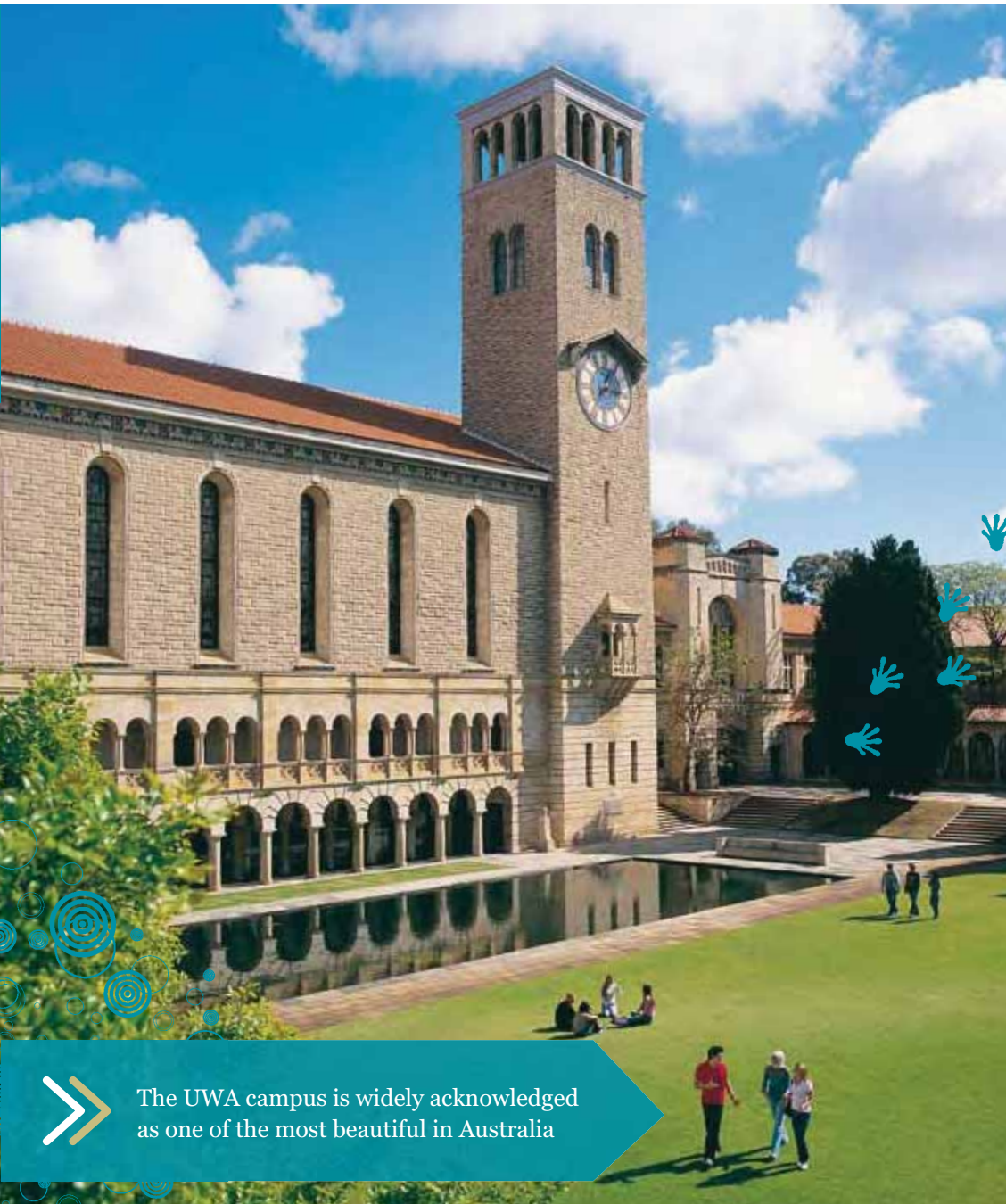
Welcome to the Study Abroad Program at the University of Western Australia (UWA)! Join a network of thousands of international students from over 90 countries who have chosen to study at UWA because of its reputation for prestige, quality, excellent facilities and services and commitment to its students. Our campus is a multicultural, multi-faith community, which includes almost 4,000 international students. We actively promote a culture of inclusiveness and respect. As a study abroad student you will be part of an integrated study experience studying alongside degree-seeking students, enjoying all the same benefits and privileges.



The choice is yours ...

- Choose to study at the undergraduate (bachelors) or postgraduate (master's by coursework or research) level.
- Choose to study for one or two semesters and commence in either semester. See the [Academic Calendar](#) for more details of semester start and end dates
- Choose to live at one of five residential colleges located on campus; or live off campus independently or in shared accommodation. See the section on [Accommodation](#) for more information
- Choose to have your units approved before you arrive or select units after your arrival in Perth. See [Academic Program](#) for more information
- Choose from over 70 different clubs or societies from the United Nations Youth Association to Solid Gold - the 'Funkiest Club on Campus', whose members pride themselves on their devotion to DISCO revival. See [Student Life](#) for more information
- Choose from over 30 sporting clubs such as the Underwater Club, Outdoor Club or the Rowing Club, all of which have been popular with past study abroad and exchange students. See [Student Life](#) for more information
- Try something different: experience rural and regional Western Australia by studying at UWA's regional education centre Albany located in the Great Southern Region. Experience towering forests, whale watching, world class surfing and wineries while studying at one of Australia's most prestigious universities. See [The Albany Experience](#) for more information.





FAST FACTS

LOCATION

5km from the city centre of Perth, capital city of Western Australia, 20km from Perth International Airport

SIZE

65 hectares

ESTABLISHED

1911

ENROLMENT 2009

STUDENT ENROLMENT

20,806

INTERNATIONAL STUDENTS

(including offshore) 4,442

UNDERGRADUATE STUDENTS

16,127

POSTGRADUATE STUDENTS

4,679

STUDY ABROAD/EXCHANGE STUDENTS

334



The UWA campus is widely acknowledged as one of the most beautiful in Australia

Why choose UWA?

Prestige

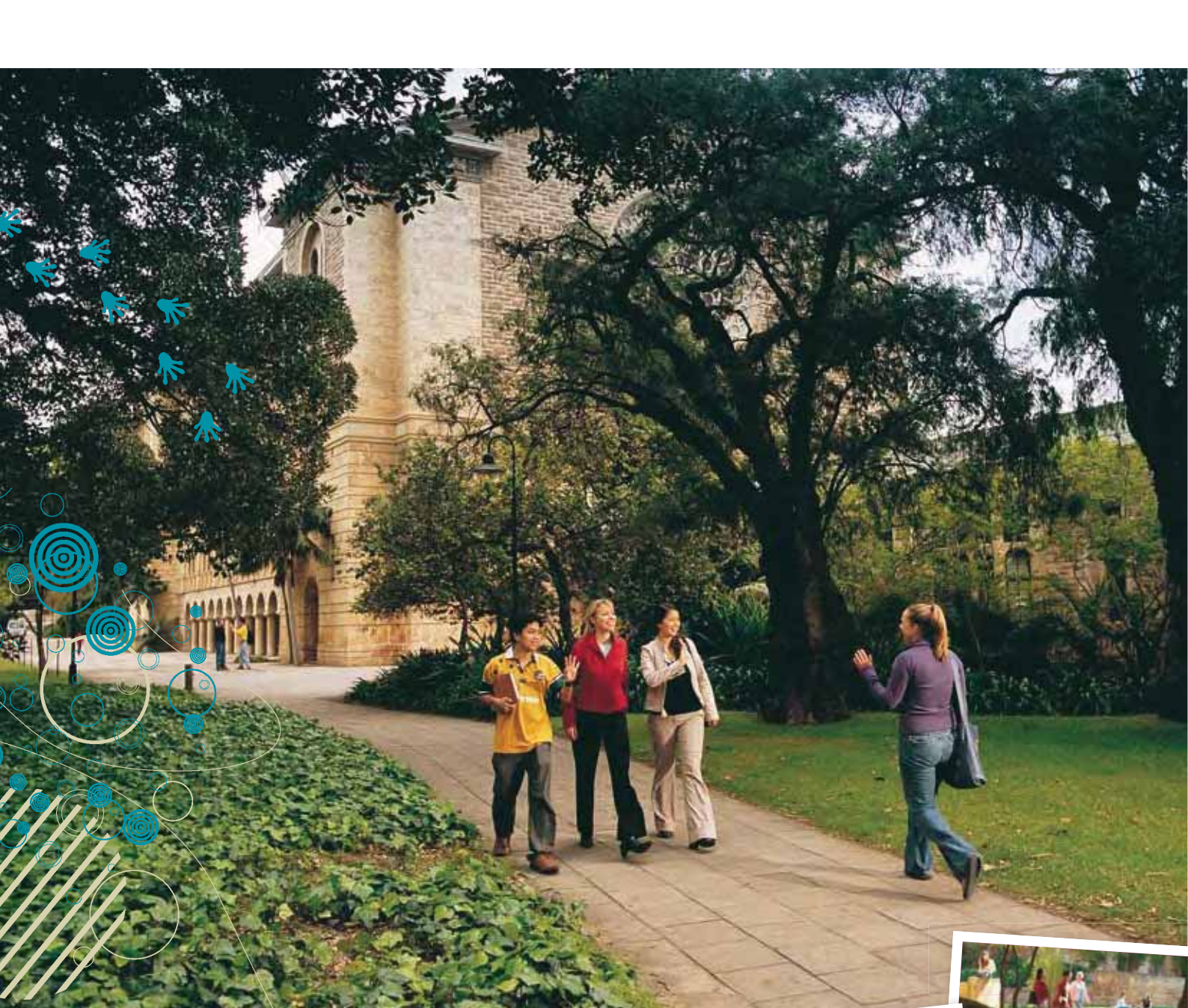
- UWA is one of only two Australian universities to belong to the Worldwide Universities Network (WUN), a partnership of 17 research universities from Europe, North America, North Asia and Australia.

Quality

- UWA consistently attracts high calibre students. In 2008 82.2% of the top 5% of school leavers in Western Australia enrolled at UWA.
- In July 2009, UWA was described as an 'excellent, high-quality, well-managed university with a broad vision' by Australia's foremost higher education review body, receiving a commendation for enhancing the student experience and study abroad programs. www.auqa.edu.au

World class facilities, great services, great fun

- The new \$45million Business School opened in May 2009, is a state-of-the-art environmentally-sustainable building offering a flexible learning environment in which to meet, work and learn. The building houses more than 4,400 students and 160 staff.
- In 2009 the University will open the Monadelphous Integrated Learning Centre, the only one of its kind in Western Australia. It will provide UWA engineering students with industry-ready experience and networks.
- In 2005 UWA was chosen as the first Australian university to host a Confucius Institute - a joint venture with the National Office of Chinese as a Foreign Language. The Institute promotes the teaching Chinese language and culture in Australia.



The Academic Program



With the freedom to design your own study program, your options are wide and varied. You can choose any unit (subject) which is part of a regular degree program at UWA across any faculty (except the Faculty of Medicine, Dentistry and Health Sciences) subject to meeting normal prerequisites. The table of *Study Opportunities* on pages 7 to 9 provides you with an idea of what's on offer in the various faculties.

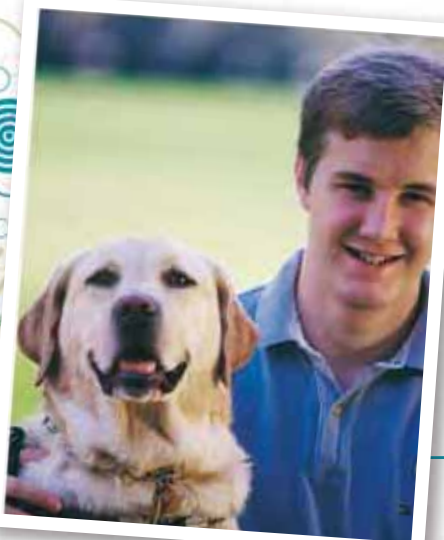
Some points to note:

- As all units are part of a degree, you should be able to satisfy core/major requirements for your home degree requirements (this will be up to your home university to decide)
- Descriptions of units can be found at the OUTWARD website www.studyat.uwa.edu.au/exchange/courses or www.handbooks.uwa.edu.au
- You can also find a credit history on OUTWARD which will show what subjects have been taken by previous study abroad and exchange students. Some may be from your home university/country.
- Each unit will show how many credit points it is worth and in which semester it is taught. The majority of units are offered on a semester basis.
- You are expected to enrol in a full academic load which is 24 points per semester. This generally works out to four units per semester.
- You may request a Pre-Approved Study List prior to arrival. You can also choose to change these selections after your arrive in Perth.
- Pre-registration (pre-enrolment) is not available, however generally units do not fill up unless they are quota-restricted. You will be advised of any quota restricted units. Enrolment (registration) will take place during Orientation.



In Political Science we have had a lot of interesting guest lecturers; for example an American ambassador, a journalist who has been reporting from Iraq and a former foreign minister of Australia. Having such people speaking about their experiences really broadens your perspectives.

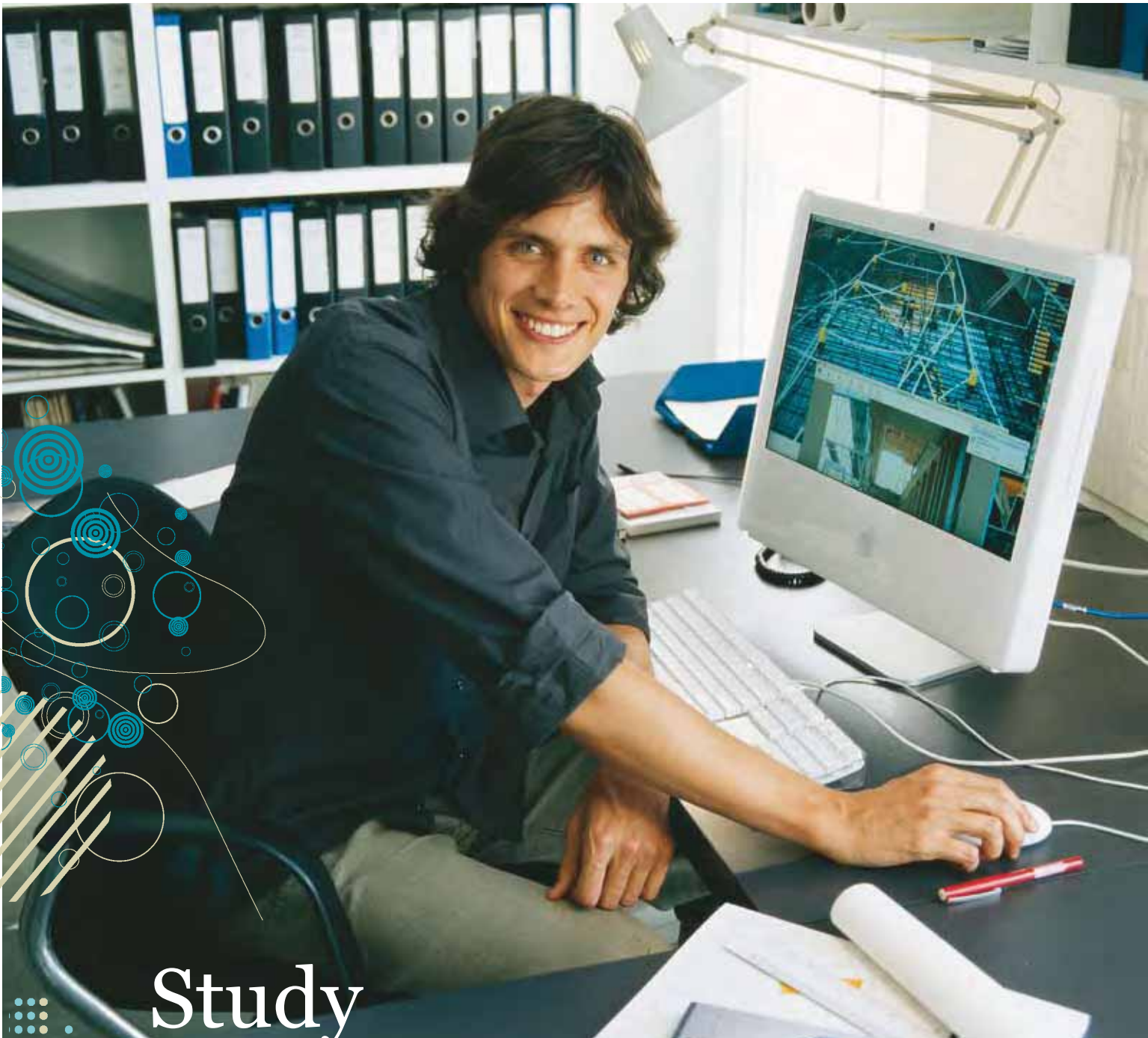
Karin Andersson, *Ava Gymnasium, Sweden*



I was a bit surprised when my first UWA lecturer introduced himself to the class as "Mel". I have found that the open, positive teacher-to-student relationship that he was demonstrating is characteristic of nearly the entire university staff. Indeed, in all my classes the lecturers and tutors have been extremely approachable and very willing to provide any assistance necessary to help me get the most out of their units. Most importantly, I feel that each staff member I've encountered has taken a personal interest in my success even though they understand that I will only be here for one semester. I find that to be very encouraging.

Jamie Dean and his guide dog Paul, *Wake Forest University, USA*





Study Opportunities

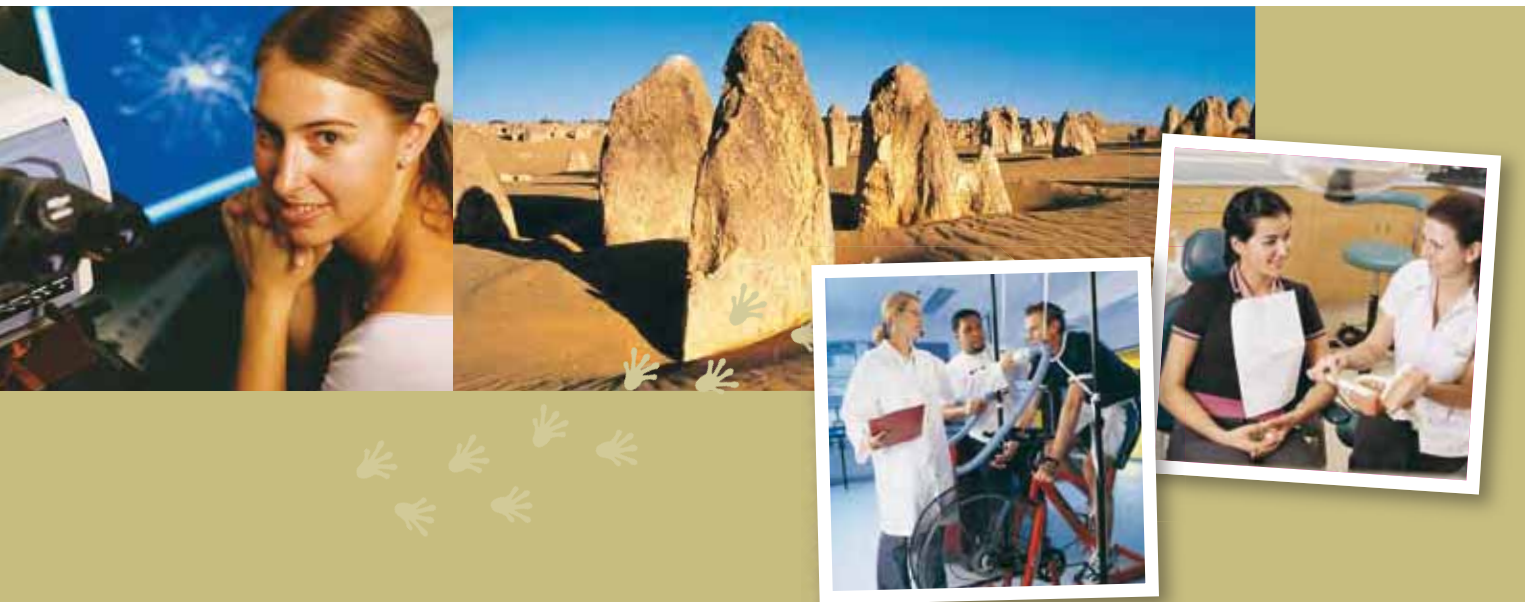


| Faculty | School/Departments | Opportunities for Study Abroad and Exchange Students |
|---|---|---|
| Architecture, Landscape and Visual Arts | | Environmental Design/Architecture, Landscape Architecture, Fine Arts, art history, studio arts (traditional and experimental techniques), electronic art (film, video and performance), sound/sculpture environments, graphics, animation, imaging. |
| Arts Humanities and Social Sciences | <ul style="list-style-type: none"> • Humanities • Music • Social and Cultural Studies | Anthropology, Archaeology, Asian Studies, Classics and Ancient History, Communication Studies, Economics, English, European Studies, Fine Arts, Geography, German, History, Industrial Relations, Linguistics, Mathematics and Statistics, Medieval and Early Modern Studies, Music (education, composition, performance), Philosophy, Political Science and International Relations, Psychology, Social Work, and Women's Studies. Particular themes for study abroad: Study Australia; Communication and Culture in the Contemporary World, International Studies in Arts, Humanities and Social Sciences. Arts Practicum (similar to internship). English Language and Academic Communication (see Admission Requirements). |
| UWA Business School | | Accounting (Financial and Managerial), Asian Business, Business Information Management, Business Law, Employment Relations, Entrepreneurship and Innovation, Finance, Human Resource Management, Management, Marketing, Money and Banking. |
| Education | | Aboriginal Education, Inclusive Classrooms, Teaching and Learning Perspectives, Art Curriculum, English Curriculum, LOTE Curriculum, Mathematics Curriculum, Career Education Curriculum, Information and Communication Technology Curriculum, Science Curriculum, Society and the Environment Curriculum, TESOL Curriculum, Special Education Curriculum, School Psychology Curriculum, Physical Education Curriculum, Educational Linguistics, Teaching Literacies, Understanding Contemporary Education, Schools and the Law, Educational, Leadership and Management, Education in Rural Australia, Teaching and Learning with Information Technology, Learning Difficulties, Creating Thinking Communities, Behaviour Management, Approaches to Student Assessment. |
| Engineering, Computing and Mathematics | <ul style="list-style-type: none"> • Civil and Resource Engineering • Computer Science and Software Engineering • Electrical, Electronic and Computer Engineering • Environmental Systems Engineering • Mathematics and Statistics • Mechanical Engineering (incorporating the recently merged Oil and Gas Engineering) | Biomedical, Chemical and Process Engineering, Civil, Computer and Mathematical Science, Computer Engineering, Computer Science, Electrical and Electronic Engineering, Environmental Engineering, Information Technology, Materials Engineering, Mechanical Engineering, Mechatronics Engineering, Mining Engineering, Oil and Gas Engineering, Ocean Systems Engineering, Petroleum Engineering, Process Instrumentation and Control Engineering, Software Engineering, Water Resources Engineering. |
| Law | | Elective units include: Indigenous Peoples and the Law, Banking Law, Comparative Law, Conflict of Laws, Criminology, Environmental Law, Family Law, Human Rights and Equal Opportunity Law, Intellectual Property, International Humanitarian and Refugee Law, International Trade Law, Medicine and the Law, Mining and Energy Law, Constitutional Law, Natural Resources Law, Legal History, Law and Religion, Feminist Analysis of Law. |



Study Opportunities continued





| Faculty | School/Departments | Opportunities for Study Abroad and Exchange Students |
|---|--|---|
| Science: Life and Physical Sciences & Natural & Agricultural Sciences | <ul style="list-style-type: none"> • Anatomy and Human Biology • Biomedical, Biomolecular and Chemical • Sports Science, Exercise and Health • Physics • Psychology • Agricultural and Resource Economics • Animal Biology • Earth and Environment • Plant Biology | Advanced Science, Agricultural Economics, Agricultural Science, Anatomical Sciences, Anatomy and Human Biology, Animal Science, Anthropology, Archaeology, Astronomy and Astrophysics, Biochemistry, Bioinformatics, Biomedical Science, Biophysical Science, Biophysics, Biotechnology, Botany, Cell Physiology, Chemical Physics, Chemistry, Climate Studies, Computer Science, Conservation Biology, Conservation Biology and Management, Earth Science, Environmental and Natural Resource Economics, Environmental, Chemistry, Environmental Geoscience, Environmental Management, Environmental Microbiology, Environmental Science, Exercise and Health, Genetics, Genetics and Breeding, Geochemistry, Geography, Geology, Geology and Resource Economics, Green Chemistry, Horticulture, Human Biology, Human, Movement and Exercise Science, Information Technology, Land and Water Management, Land Rehabilitation, Landscape Management, Linguistics, Marine Biology, Marine and Coastal Management, Marine Science, Mathematics and Statistics, Microbiology, Mineral Geoscience, Molecular Biology and Biotechnology, Nanotechnology, Natural Resource Management, Neuroscience, Pathology, Petroleum Geoscience, Pharmacology, Physical Science, Physics, Physiology, Psychology, Restoration Ecology (only available at the Albany campus, see page 31), Science Communication, Scientific Computation, Soil Science, Sport Science, Urban and Regional Planning, Wildlife Management, Zoology. |
| Medicine, Dentistry and Health Sciences | <ul style="list-style-type: none"> • Dentistry/Oral Health Centre of WA • Medicine and Pharmacology • Surgery and Pathology • Paediatrics and Child Health • Population Health • Psychiatry and Clinical Neurosciences • Primary, Aboriginal and Rural Health Care • Women's and Infants' Health | Courses offered within medicine and dentistry degrees are not generally open to study abroad and exchange students. However, some units are available in the areas of public health and health science. |



A satisfying academic experience

Teaching and Learning

Although most of you are experienced university students, there may be some differences in the style of teaching at UWA to what you may be used to. Having an awareness of these differences will give you an appreciation of the academic expectations at UWA and enable you to have a more satisfying study experience.

The following points highlight some of the major differences as observed by past study abroad and exchange students:

- Units are taught concurrently during the semester.
- Units are normally taught as lectures once or twice a week complemented by a tutorial, seminar, laboratory or fieldwork.
- Lectures may be large, sometimes with 100-200 students.
- Tutorials, seminars, laboratories, practicals, fieldwork and workshops are generally smaller classes of about 10-20 students where most discussion takes place. You are expected to be prepared and actively participate in discussions. These classes may be compulsory and are normally assessed.
- There is less formality between lecturers and students.
- There are fewer contact hours with greater expectation of independent study through directed reading and essay writing.

Assessment

There are no special examinations for study abroad or exchange students as you will be assessed according to the same standards and regulations as degree-seeking students.

A summary of what to expect in terms of assessment follows:

- Assessment will be based on a combination of oral/written assignments and tests, project work, participation in tutorials and laboratories and final examinations.
- There is less formal assessment throughout the semester and heavier weighting given to final examinations, sometimes up to 80% of the final mark.
- All units are assessed and graded at the end of semester except for full year units which will be done at the end of the academic year (November).

Academic Transcript

On completion of your studies at UWA, you will have access to an official academic transcript.

The transcript will contain the following details:

- units enrolled
- unit credit points
- period of study for each unit
- grades and percentages received



Grading Scale

| Grade | Percentage % |
|-------|------------------------------|
| HD | Higher Distinction 80 - 100% |
| D | Distinction 70 - 79% |
| CR | Credit pass 60 - 69% |
| P | Pass 50 - 59% |
| N+ | Fail 45 - 49% |
| N | Fail 0 - 44% |
| UP | Ungraded Pass |
| P* | Pass Conditional |
| UF | Ungraded Fail |

Academic Support

Entering a new environment is a stimulating and rewarding experience but it also brings with it many challenges. The short-term nature of your studies may heighten some of these challenges, particularly those of an academic nature. At UWA we recognise this and are committed to providing the support required to ensure you have a successful academic experience at UWA.

During Orientation you will be assigned to an academic adviser who will be one of your major sources of information and assistance for academic issues. Your academic adviser will help you to create a study program based on your academic background and requirements.

Further academic assistance is also available from the various Schools and unit coordinators. Learning Skills advisers (who are part of Student Services) offer workshops and courses on learning and research skills, for both undergraduate and postgraduate students. During Orientation more detailed information will be provided about the culture of the University in terms of how the academic units are structured, the academic expectations, who to contact for assistance and generally how things work at UWA.

Admission Requirements

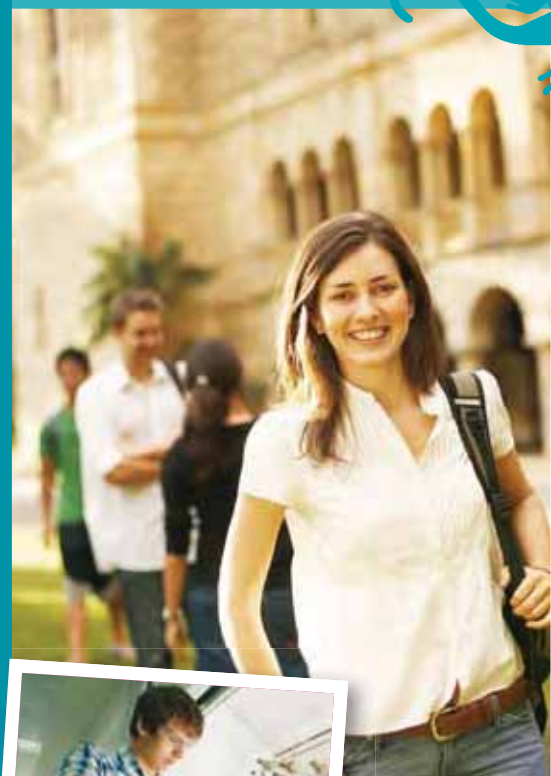
Minimum requirements

- Completion of at least one year of study at a recognised tertiary institution at the time of application with an overall 'B' average or GPA of 3.0/4.0 or equivalent. [If you would like to undertake postgraduate study, you must have completed the equivalent of an Australian bachelor's degree.]
- Direct entry from high school will be considered on a case-by-case basis, provided students meet the minimum admission criteria for entry to the relevant UWA bachelor's degree.
- Satisfy UWA English language competency requirements.

| | |
|--|--|
| GCE Ordinary Level English | C6 or higher |
| TOEFL (paper-based total) | Essay Rating/TWE of 4.5 and score of 570 |
| TOEFL (computer-based total) | Essay Rating/TWE of 4.5 and score of 230 |
| Next Generation TOEFL | Internet-based Test (iBT): an overall score of 90 with a minimum score of 22 in the writing section, and no less than 20 in the other sections |
| IELTS | 6.5 (no individual band less than 6.0) |
| UWA Centre for English Language Teaching Bridging course | B grade or better |
| German Abitur | Minimum grade 3 in German Abitur, in conjunction with a minimum grade B in DAAD Certificate of Language Proficiency test |
| Norwegian Vitnemål | Minimum grade 4 in the English component |
| Swedish Slutbetyg | Minimum grade VG in the English paper |
| Danish High School Certificate | TBC |
| Finnish Upper Secondary School | Diploma - Grade 8 or better |

Results must not be more than two years old at the time of application.
A full list of all UWA-approved tests for English competency is available at:
www.uwa.edu.au/prospective/undergrad/requirements/english

Applicants who do not meet the above English language proficiency may wish to consider enrolling in an English language course at the UWA Centre for English Language Teaching (CELT). The Centre offers courses in General English, English for Academic Purposes and Bridging English.



For more information please contact:

Centre for English Language Teaching

The University of Western Australia
35 Stirling Highway
Crawley 6009

Perth, Western Australia

T: (61 8) 6488 3539

F: (61 8) 6488 1077

E: celtinfo@celt.uwa.edu.au

W: www.celt.uwa.edu.au



Minimum requirements

From July 2009, UWA will offer an English language credit bearing unit - English Language and Academic Communication (HUMA 1101), which will focus on English language and academic communication skills for tertiary study. It has been designed to meet the immediate needs of Study Abroad and exchange students entering the UWA for linguistic and cultural immersion. Offering eligible students guided English language development within their program of study.

The unit has a value of one quarter (6 points) of a normal semester load (24 points) and will be taught by staff from the Faculty of Arts, Humanities and Social Sciences. Students will be able to study it alongside three other units as part of a standard semester enrolment. The entry points are:

- IELTS 6.0 (no band score below 6.0)
- Internet-based TOEFL 77
- Computer-based TOEFL 210
- Paper-based TOEFL 540
- Cambridge Certificate in Advanced English with C grade

A second unit, English Language and Academic Communication (HUMA 1102) may be offered from February 2010.



When I arrived here, I was unsure about where I was going and what I was doing. Then I visited the Study Abroad office and saw that the staff there were happy to see me, knew that I was coming and they were really willing to help.

Jérôme Mardon, University of Poitiers, France

How do I apply?



Use one of the following processes:

| Where? | How? | Where can I find more information? |
|---|---|--|
| Directly to UWA | Please complete the online application at www.international.uwa.edu/au/sesa/apply | Study Abroad Office International Centre The University of Western Australia 35 Stirling Highway Crawley, Perth Western Australia 6009 Tel +61 8 6488 8199 Fax +61 8 93824071 Email: studyabroad@admin.uwa.edu.au Website: www.international.uwa.edu.au/sesa |
| Through Your Home University | Contact the Study Abroad Office or International Office at your home university | |
| Through North American programs affiliated with UWA | Contact these programs directly: <ul style="list-style-type: none"> • Institute for Study Abroad Butler University • Arcadia University, College of Global Studies • State University of New York (Brockport) • The Education Abroad Network (Study Australia) • AustraLearn • Australian Education Connection | www.international.uwa.edu.au/sesa/apply/sa_contacts |
| Through UWA Representatives Overseas | Contact these organisations directly: <ul style="list-style-type: none"> • Centre for International Studies (CIS), Sweden • Kilroy Education (Denmark, Netherlands, Norway, Sweden) • College Contact (Germany) • Degrees Ahead (UK) • Institute Ranke-Heinemann (Germany) • IEC Online (Germany) • SONOR (Norway) • Study Options (UK) | www.international.uwa.edu.au/sesa/apply/sa_contacts |

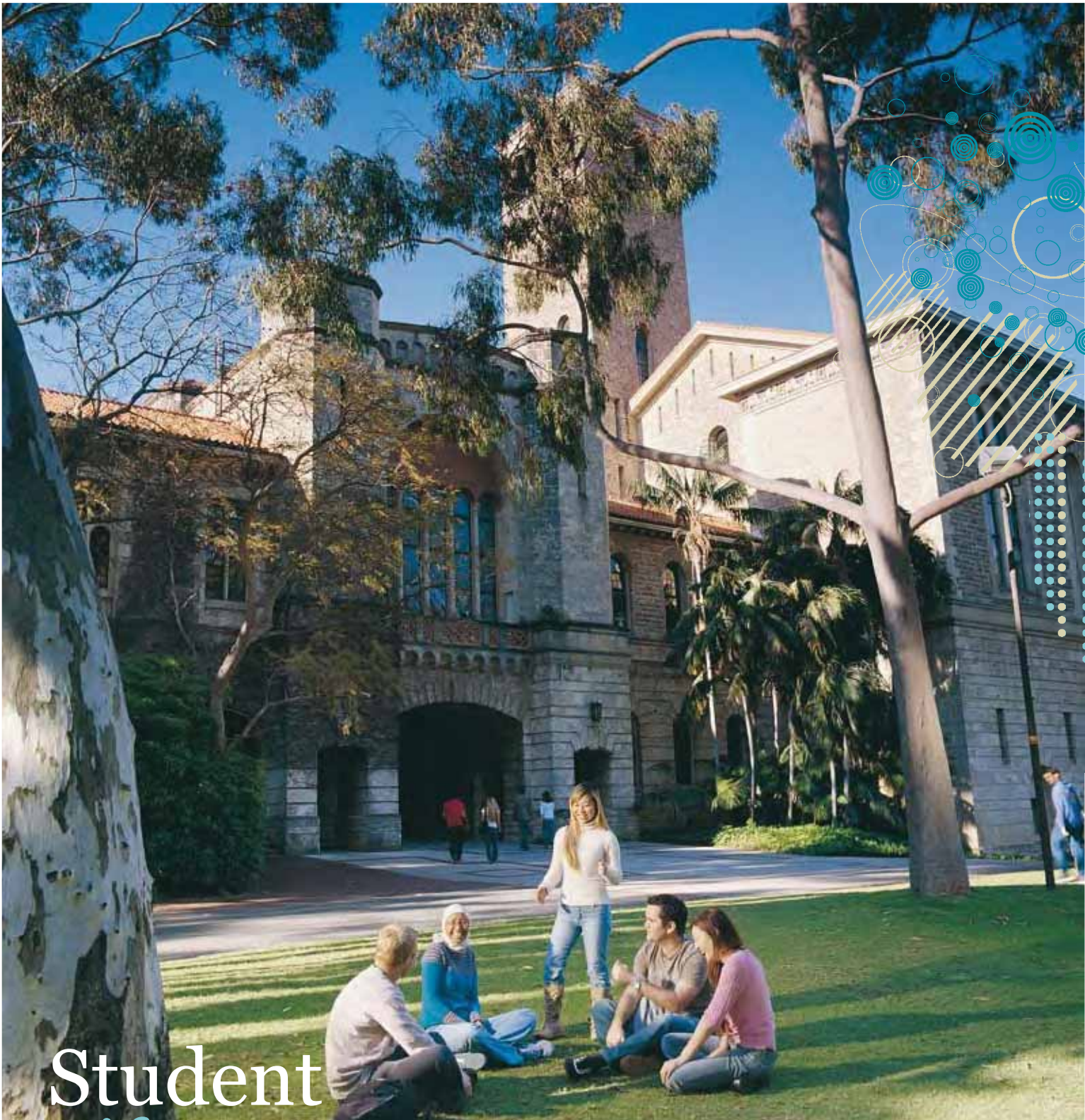
Applications for on campus housing can be downloaded from the internet at:

www.international.uwa.edu.au/sesa/perth/accommodation/download (there is an application fee of AUD\$60).

Include these documents with your application:

- Completed application form
- An original or certified copy of your current official academic record including all tertiary study
- Evidence of English language competence
- Application for on campus housing (where required). As demand for student housing is very high please submit this form at the same time as your application for admission.

Where documents are not in English, a certified English translation must be enclosed.



Student Life

While your studies are an important part of your overall study abroad adventure, what will probably remain foremost in your mind is the more personal side of your UWA experience. Studying abroad is a rewarding undertaking but it can also be very confronting. Our aim is firstly to make your transition to UWA as easy as possible, and then maximise your whole experience by encouraging you take part and make use of all the excellent facilities, great services and fun that you will find on campus. It all starts with Orientation.

Orientation

Each semester an orientation program is arranged specifically for study abroad and exchange students. This program provides you with essential information about studying at UWA and living in Perth as well as opportunities to meet other international students and UWA students.

During Orientation you will formalise your study plan, gain more information about academic and general issues, familiarise yourself with the campus and the city through optional tours and social activities. You will also have the opportunity to participate in the general university orientation program for all new students to the University. At the beginning of the academic year (February/March) the general university orientation is a great experience and feels like a huge festival with all the different clubs and societies in full swing.

UWA Campus - the place to be seen

UWA is definitely the place to be for a lively student life in Perth. Most of the social life on campus is organised through the UWA Student Guild which is the representative student organisation. Now in its 96th year, the Guild has a reputation for being one of the most active and social in Australia. It organises countless activities, a fringe festival, campus band and DJ competition and provides many of the services, as well as supporting 70 clubs and societies.

The Guild Village is a buzzing hive of activity every day of the week. The courtyard is now known by its Nyoongar (Aboriginal) name, Koort Kwoba Dandjoo, which means Happy Hearts Together. It contains Student Services, shops and food outlets and a Market Day every Tuesday where you can buy CDs, DVDs, clothing and locally-made jewellery and much more. The Village also houses a second-hand bookshop, a regular (discount) bookshop, pharmacy, copy centre, optometrist and hairdresser as well as a stylish set of Stargate-inspired benches.



The University is very beautiful with peacocks and palm trees. I could spend hours watching the peacocks in the beautiful surroundings. My personal highlight has been meeting so many people from different cultures and nationalities and learning about them.

Ina Schroder, University of Klobenz, Germany



The UWA Student Guild - Your Voice, Your Guild

Representing you to the University, government and the wider community.

Activities include:

- O-Day (Orientation Day) Festival
- Prosh
- Future DJ competition
- National Campus Band Competition
- End of Semester Shows
- Footy Tipping
- Club Carnival
- Spring Fest
- Guild Ball
- Fringe Festival



Clubs and Societies

AIESEC

Amnesty International UWA

Asian Students in Australia

Association for Music and its Performance

Association of Mechatronic Engineers

Australasian Union of Jewish Students

Bahai Society

Bay 13 Australian Appreciation Club

Be With Buddha Society

Chemistry Club

Christian Union

Computer Science Students' Club

Chinese Society

Dance UWA

Desi Subcontinental Students Society

Distinguished Order of Metal

Film Society

French Club

Greens

Health Science Society

Ignition

Indonesian Students Society

Italian Club

Japanese Studies Society

Joshua Life

Kaos German Club

Labor Club Leisure Social Club INC

Mahjong Club

Malaysian Students Union

Mechatronic Engineers

Overseas Christian Fellowship

Pantomime Society of UWA

Passion

Photography

Physical Education Student Association

The Progressive Law Students Association

Politics Club

Rotaract Club of UWA

S.N.A.G.S Club

Science Union

Shadrach, Meshach and Abednego

Society of Petroleum Engineers

Solid Gold

Student Christian Movement

Student Environmental Engineers Club

The Progressive Law Students Association

Undergraduate Physics Society

Uni Camp for Kids

UniGames

United Nations Children's Rights Ambassadors

United Nations Youth Association

University Computer Club

University Dental Students' Society

University Dramatic Society

University Engineers' Club

University of WA Nerf Combat Association

University Science Fiction Association

UWA Society for Baha'i Studies

UWA Society for Creative Anachronism

UWA University Debating Union

UWA Waterslide Club

UWAnime Japanese Animation Club

Waterslide Club aka. UWA Waterslide Club

Woolnough Society

Zoology Club

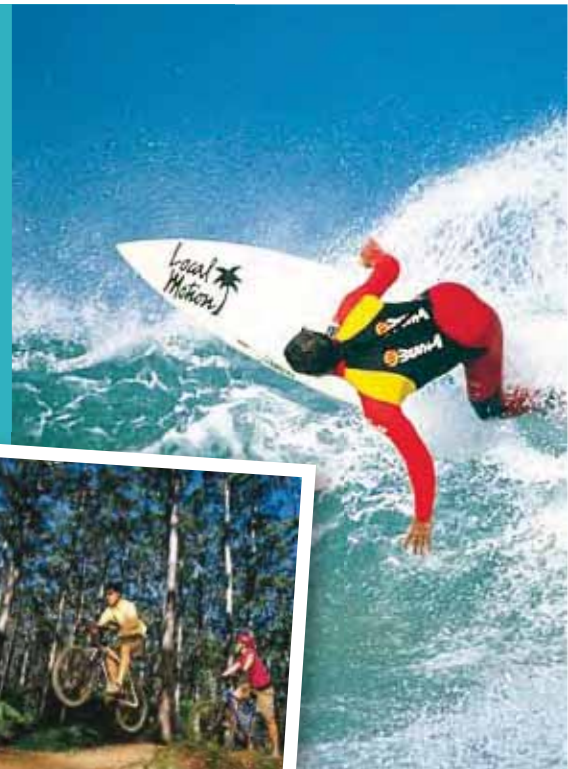
Sporting Life - UWA Sports

The Australian Institute for Sport recently endorsed UWA as a member of the national Elite Athlete Friendly University (EAFU) network. But you don't have to be an elite athlete to enjoy sporting life at UWA.

There is a wealth of sporting facilities on campus. Our \$2m Watersports Complex nestled on the foreshore at Matilda Bay is home to the UWA Boat Club, Underwater Club, Waterski Club and the Outdoor Club, tennis and squash courts, sports and leisure shop and numerous sports clubs. Nearby is the UWA Sports Park which covers 33 hectares of playing fields and facilities including the new UWA Tennis Complex, the largest clay court and most modern tennis complex in Australia. A wide range of competitions is offered including social sports, inter-faculty sports, inter-college sports, state and national inter-university competitions.

Whether you're into adrenaline pumping outdoor adventure or want to try out Australian Rules Football, belly-dancing, or maintaining a healthy lifestyle, there's plenty of variety on offer to cater to all interests.

More information is available at: www.sport.uwa.edu.au



List of Sports Clubs

Akido

Athletics

Badminton

Baseball/Softball

Boat

Cricket

Fencing

Flying Disc

Football

Golf

Hockey

Judo

Karate

Kendo, Kobudo

Netball

Outdoor

Rowing

Rugby

Savate

Soccer

Squash

Swimming

Table Tennis

Tae Kwon Do

Tennis

Touch

Triathlon

Ultimate Frisbee

Underwater

Volleyball

Water Polo

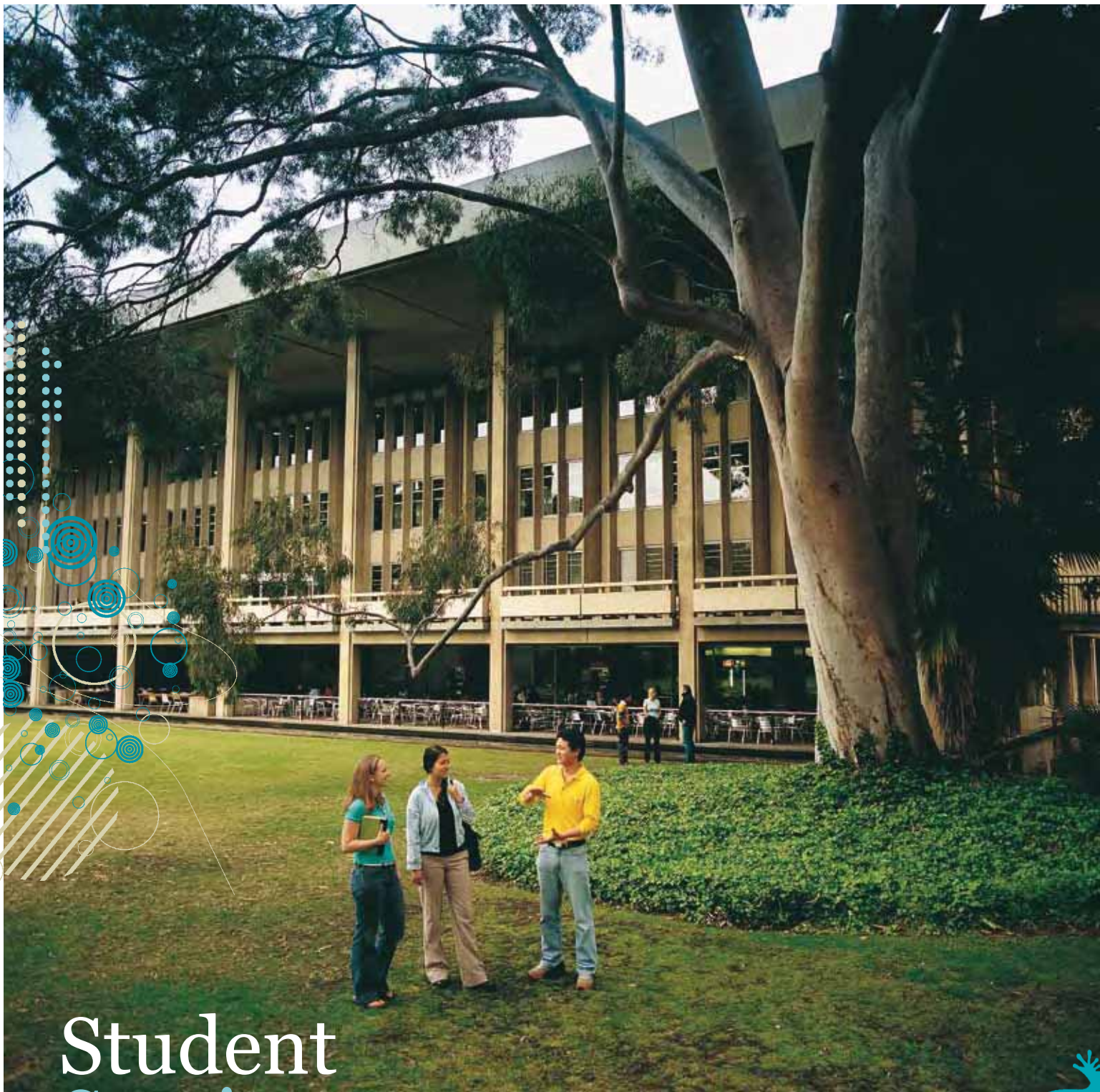
Water Ski

I am a senior in International, Resource and Consumer Economics with a concentration in Consumer Economics and Finance. My most memorable experience at UWA was PROSH*. I have never been involved with a fundraiser so unique and fun! A few of my friends and I dressed up as the ninja turtles. We went to the lawn and danced the night away with hundreds of UWA students. Then we headed back to St. Thomas More to have a huge breakfast at 5am before we headed off to the city to sell papers. In the city students spread throughout the city selling newspapers to raise money for charity.

* PROSH is a charity event which has been running since 1931. In 2009 PROSH raised \$139,000 in a single day.

Chelsie Young, University of Illinois Urbana Champaign, USA





Student Services

UWA is committed to providing high quality services to enable you to take full advantage of all the opportunities at UWA and deal with any challenges that may arise during your period of study. All staff are qualified professionals with an understanding of student issues, needs and concerns.



Some of these services include:

Counselling Service

Private and confidential consultations provided by qualified professionals to deal with personal and academic issues. All services are free.

Learning, Language and Research Skills (LL&RS)

Learning and research skills advisers help both undergraduate and postgraduate students to learn and research efficiently and effectively through skills workshops on most aspects of learning and research. You can also consult them on an individual basis about any personal concerns you have about learning, researching and writing. Individual tutoring and study guides are also available. Services are confidential and mostly free.

Disability Program

The University is committed to enabling students with disabilities and chronic medical conditions to achieve their full potential. The program provides a full range of facilities and services and support to students who have special needs. All services are free. It is very important we know of any special requirements you have, before you arrive in Perth.

Careers Centre

The Careers Centre provides students with a wide range of advisory, educational, information and employment services to assist currently enrolled students. Many Study Abroad and exchange students have used this service to find casual, vacation and volunteer work.

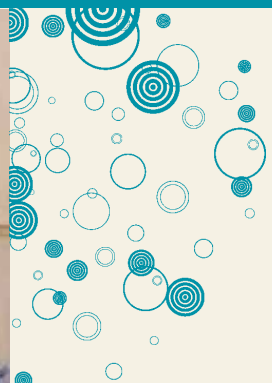
Medical Centre

Doctors and nursing staff provide a full range of general practice services including emergency care and treatment of illnesses and injury.

Housing Office

See the section on Accommodation, page 22

More information on all aspects of Student Services is available at: www.studentservices.uwa.edu.au.



UniLink is a program offered to all students who are new to Perth. It links new students to existing UWA student volunteers who will provide help and support in settling into the UWA environment.



Accommodation



Many Study Abroad and exchange students choose to live at one of the five residential colleges which are located adjacent to the University. Renting off campus apartments and houses either independently or on a share basis is also a popular choice.

On Campus Housing

Currie Hall

Email currie@cyllene.uwa.edu.au

Tel +61 8 9273 3333

Fax +61 8 9388 1224

www.currie.uwa.edu.au

St. Catherine's College

Email stcats@cyllene.uwa.edu.au

Tel +61 8 9386 5847

Fax +61 8 9386 3844

www.stcatherines.uwa.edu.au

(Women only)



St. George's College

Email admin@stgeorgescollege.com.au

Tel +61 8 9449 5555

Fax +61 8 9449 5544

www.stgeorgescollege.com.au



St. Thomas More College

Email stmcsec@cyllene.uwa.edu.au

Tel +61 8 9386 0111

Fax +61 8 9389 1104

www.stmc.uwa.edu.au



Trinity

Email admin@trinity.uwa.edu.au

Tel +61 8 9423 9423

Fax +61 8 9423 9422

www.trinity.uwa.edu.au

(on-line enrolment process available)



Residential Colleges (On Campus Housing)

The residential colleges are a great option if you are studying at UWA for only one or two semesters. The residential colleges offer numerous social activities such as formal dances, café crawls, river cruises, trips to and around Perth, theme dinners and inter-college sports organised throughout the semester. You can also get help with the academic side of things through tutors, fellow students and resident staff members. You have your own fully furnished study-bedroom and share bathroom facilities with a small group of other students. Fees normally include three meals a day and regular cleaning. **Gaining a place in a residential college is very competitive and not guaranteed so please apply. Please note housing is not guaranteed at the time you apply for admission.**

Off Campus Housing

The Housing Office provides a free service on accommodation related issues for all UWA students. It operates an online database of both vacant and shared accommodation which you can use anytime during the year. You can also access this database prior to arrival but you must have a Letter of Offer before you are able to gain access. The online database is available at: www.studentservices.uwa.edu.au/ss/housing/living_off/finding_offcampus The Housing Office gives particular attention to the needs of international students who may not be confident in their ability to negotiate in English. Although renting off campus housing is a popular option, be aware that there may be certain conditions such as minimum leasing periods, and additional expenses such as the purchase of furniture, household equipment and connection of utilities for electricity, gas and telephone. Try to arrive at least two weeks before semester starts so that you have sufficient time to find off campus housing. It is also recommended that you apply for temporary accommodation prior to arrival so that you have a base to live while you look for permanent accommodation. Temporary accommodation is available at the residential colleges and more information about this service will be made available in your Letter of Offer.

For further information contact the Housing Officer

Email housing@uwa.edu.au

Tel +61 8 6488 3547

Fax +61 8 6488 1119

www.studentservices.uwa.edu.au/information_about/housing



Living & Studying

What does it cost to study at UWA?

Tuition

Please refer to the tuition fees information sheet included or visit our website: www.studyat.uwa.edu.au/exchange/studyabroad

Fees are based on a standard full time enrolment of 24 points per semester.

Cost of Living

Perth offers a high standard of living at a comparatively low cost. When compared with other study destinations, Perth provides excellent value for money.

The annual cost of living depends on the student's lifestyle and type of accommodation, but AUD\$350 - AUD\$450 per week (AUD \$18,200-\$20,800/year) is generally sufficient for most students to live comfortably (not including tuition fees).

The "Tuition fees and Cost of Living" insert gives an indication of the type of expenses and average costs students will need to meet. More information can be found at www.studyat.uwa.edu.au.

Overseas Student Health Cover

All applicants for an Australian Student Visa (and their dependants) must be covered by acceptable health insurance cover during the whole period of study in Australia by purchasing Overseas Student Health Cover (OSHC). It is a compulsory government requirement and applies to all international students except where special government arrangements between certain countries are in place (eg Norway, New Zealand and Sweden).

Do I need a visa to study for one or two semesters?

All international students must obtain a visa to enter Australia. In most cases, this is a Student Visa. Student Visas are issued for the duration of your course and only for full-time courses. Some students who are studying for only one semester may be able to apply for a Working Holiday Maker visa. There are special conditions and certain limitations if you choose to study on a Working Holiday Maker visit. For example, you will not be covered by the Education Services for Overseas Students (ESOS) legislative framework. Please check the Department of Immigration and Citizenship (DIAC) website at www.immi.gov.au for more information.

How do I apply for a Student Visa?

To apply for a Student Visa, you will require a Confirmation of Enrolment form (CoE) from UWA. This will be provided to you after you have formally accepted an Offer of Admission and paid your first semester's fee and Overseas Student Health Cover. You can then start the visa application process. (Exchange students are not required to pay tuition fees.)

Contact the Australian Department of Immigration and Citizenship (DIAC) at www.immi.gov.au for details on Student Visas. DIAC has offices around the world. Information is also available from the Australian Department of Foreign Affairs and Trade, including a list of Australian Consulates and Embassies around the world. Student Visa holders are covered by the Education Services for Overseas Students (ESOS) legislative framework. It is important that you understand your rights and responsibilities under the ESOS framework. www.international.uwa.edu.au/studentnet/esos

Can I work while I am studying?

Everyone applying for a Student Visa will receive permission to work with their visa grant. If you have permission to work, you can work up to 20 hours per week during semester and full time during vacation periods. However, you cannot start work until you have commenced your course in Australia.

You do not need a visa label in your passport to show your employer that you have permission to work. Your visa information is held electronically by the Department of Immigration and Citizenship (DIAC) and can be accessed at any time for verification.





Student Exchange Program

UWA has formal agreements with the following institutions. If you are participating in the Student Exchange program you will receive a tuition fee waiver. You must be nominated by your university to participate in the Student Exchange program. Please apply through the Study Abroad Office or Office of International Programs of your home university.

| Country | University/Institution |
|--------------------------------------|--|
| Austria | University of Vienna |
| | Wirtschaftsuniversität Wien (Vienna University of Economics and Business Administration) |
| Canada | Laval University |
| | McGill University |
| | McMaster University |
| | Queen's University |
| | Simon Fraser University |
| | The University of British Columbia |
| | University of Calgary |
| | University of Ottawa |
| University of Waterloo | |
| China | Zhejiang University |
| | Dalian University of Technology |
| | Harbin Institute of Technology |
| Denmark | Copenhagen Business School |
| | Københavns Universitet (University of Copenhagen) |
| France | Institut Galilée - Université Paris 13 |
| | Sciences PO |
| | Université Charles de Gaulle (Lille III) |
| | Université de Limoges |
| | Université d'Evry/Val d'Essonne(UEVE) |
| | Université De Montpellier 2 (UM2) |
| | Université Louis Pasteur (Strasbourg I) |
| | Université Paul Cézanne (Aix Marseille III) |
| | Université de Poitiers |
| | Université des Sciences et Technologies (Lille I) |
| Université Sorbonne Nouvelle Paris 3 | |
| University of Rouen | |
| Germany | Albert Ludwigs Universität Freiburg |
| | Technische Universität Clausthal |
| | Eberhard Karls Universität Tübingen |
| | RWTH Aachen |
| | Universität Koblenz-Landau |
| | Universität Passau |
| | Universität Stuttgart |
| WHU Otto Beisheim Graduate School | |
| Hong Kong | Hong Kong Polytechnic University |
| | University of Hong Kong |
| Italy | Politecnico di Milano |
| | Università di Bologna |
| | Università Cattolica del Sacro Cuore |
| | Università degli Studi di Milano |
| Japan | Himeji Dokkyo University |
| | Kansai Gaidai University |
| | Kobe University |
| | Oita University |
| | Ritsumeikan Asia Pacific University |
| | Sophia University |
| | Toyohashi University of Technology |
| Malaysia | Universiti Sains Malaysia |

| Country | University/Institution |
|---|---|
| Netherlands | Vrije Universiteit |
| | University Maastricht |
| | Utrecht University |
| New Zealand | University of Otago |
| Norway | Norges Handelshøyskole (NHH - The Norwegian School of Economics and Norges Business Administration) |
| | Teknisk-Naturvitenskapelige Universitet (NTNU - The Norwegian University of Science and Technology) |
| | Universitetet i Oslo (University of Oslo) |
| | Universitetet for miljø-og biovitenskap (UMB – The Norwegian University of Life Sciences) |
| | Universitetet i Bergen (University of Bergen) |
| Universitetet i Stavanger (University of Stavanger) | |
| Poland | Wroclaw University of Technology |
| Singapore | National University of Singapore (NUS) |
| | Nanyang Technical University (NTU) |
| | Singapore Management University |
| South Africa | University of the Witwatersrand |
| Sweden | Lund University |
| | Mälardalens Högskola (Mälardalen University) |
| | Stockholms Universitet (Stockholm University) |
| | Uppsala Universitet (Uppsala University) |
| Switzerland | The University of St. Gallens |
| United Kingdom | Royal Holloway, University of London |
| | University College London |
| | University of Bristol |
| | University of Glasgow |
| | University of Leicester |
| | University of Nottingham |
| University of Sheffield | |
| United States of America | Indiana University |
| | Iowa State University |
| | Montana State University |
| | North Carolina State University |
| | Pennsylvania State University |
| | Purdue University |
| | University of Arizona |
| | University of California |
| | Berkeley |
| | Davis |
| | Irvine |
| | Los Angeles |
| | Riverside |
| | Santa Barbara |
| | Santa Cruz |
| | San Diego |
| | University of Illinois, Urbana-Champaign |
| | University of Michigan |
| University of New Mexico | |
| University of Pennsylvania | |
| University of Texas at Austin | |
| University of Vermont | |
| University of Washington | |
| Willamette University | |

Perth

There's something about Perth ... friendly people, fantastic climate, great lifestyle



The city of Perth has been called many things from one of the “most isolated cities” in the world to “one of the most liveable cities in the world” or the “sunniest capital city in Australia”. Whatever the label, the “golden handcuff” of the West will get you and you’ll never want to leave. There’s just something about Perth. Perhaps it’s the friendly locals who go out of their way to say hello, or maybe it’s the easy-going lifestyle and the expansive blue sky which will have you walking on sunshine most days of the year, even in winter. Maybe it’s having the best beaches in the country - the whitest sand, the clearest sparkling water - and all so accessible from the city. Or perhaps it’s the lack of traffic jams, the clean fresh air and the freedom you feel from all the open spaces found in the many parks around Perth.

This is Perth - large enough (1.5 million people) and cosmopolitan enough (over 200 different nationalities) to provide the colour and variety for a great lifestyle, but small enough to remain intimate and friendly giving you that feeling of belonging from the moment you set foot on our shores.

Whichever way you look at it, Perth is amazingly beautiful, the weather is fabulous, and the locals are friendly.

Lots to do!

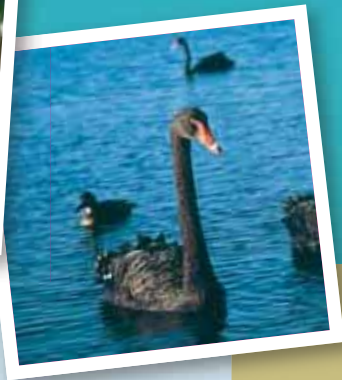
As a student in Perth there is so much for you to do, from the disco and jazz bars in Northbridge or the funky cafes in Fremantle, the sassy port city just half an hour from the CBD of Perth, to opera and musicals, international film festivals and concerts, live bands, contemporary and indigenous art and craft galleries, museums and theatres.

Sport

Perth people are obsessed with sport - both watching it and playing it. Winter is when Aussie Rules Football (aka as 'the footy') kicks off. Witness the sporting frenzy between the cross-town Aussie Rules Football rivals - the West Coast Eagles and the Fremantle Dockers - during the bi-annual Western Derby. During summer, cricket becomes the national religion and the Western Australian Cricket Ground (also known as the WACA) is the place to be!

The Outdoors

Like the rest of Australia, the beach and ocean is an essential part of Perth's lifestyle. So with the Indian Ocean, the Swan River, and a great climate, it's not surprising that there's a whole range of water sports on offer in Perth. Try your hand at surfing, windsurfing, kite-surfing, kayaking, sailing, snorkelling, scuba diving or you can always just laze around on the beach or at Kings Park, 450 hectares of natural bushland and botanical gardens right in the middle of Perth and just up the road from UWA.



FAST FACTS

PERTH
capital city of Western Australia

LOCATION SOUTH
Western corner of Western Australia

POPULATION
1.5million
(fourth largest city in Australia)

SIZE OF WA
2,525,500 sq km
(largest state in Australia)

GOVERNMENT
Demontratic

TIME ZONE
GMT + 8 hours

RELIGION
Complete religious freedom

LANGUAGE
English

CURRENCY
Decimal

CLIMATE
Mediterranean. Located in the southern hemisphere, Australia's seasons are opposite to those of the northern hemisphere.

Perth Weather

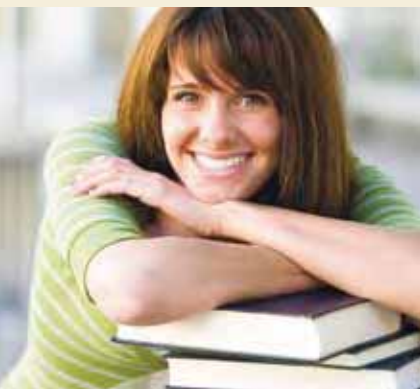
| Summer | Autumn | Winter | Spring |
|-------------|-------------|-------------|-------------|
| Dec to Feb | Mar to May | Jun to Aug | Sep to Nov |
| 20° to 32°C | 12° to 25°C | 8° to 18°C | 10° to 22°C |
| 68° to 90°F | 50° to 85°F | 46° to 66°F | 48° to 76°F |

Eating Out

Café culture is big in Perth. You'll find funky little cafes in many neighbourhoods from the centre of Perth to the coastline of the Indian Ocean, each with their own distinctive character. Perth has more restaurants per capita than any other city in the world. From sushi bars to Italian Trattorias, curry houses to upmarket restaurants, there's a wealth of tantalising tastes reflecting the ethnic diversity of Perth's population. During summer, everything is 'al fresco', including dining, outdoor movies, and of course the traditional Aussie barbeque. There's nothing better than a balmy summer night with friends around a barbeque, or a picnic down at the Sommerville Theatre before settling into a deckchair to watch a movie. You could grab some fish and chips and sit on a carpet of soft grass down at Cottesloe Beach while you watch the sun set on the Indian Ocean.

Getting Away

When you've had enough of the city, escape to Rottnest Island - this is where the locals go to get away from every day life. Just a ferry ride from the city, Rottnest Island is well known for superb snorkelling, diving, surfing, fishing, boating and swimming in crystal bays. If you're not a beach person, there are plenty of walking trails, golf and a museum which reveals Rottnest's darker past. There are no cars on Rottnest so everyone gets around on bikes. Cycling from bay to bay is a favourite pastime.



I think it is amazing here, I love it! Perth is a city like no other I have visited, it is a great place to study and live. I'm so surprised that I have not felt homesick I think it is because I'm having so much fun! There are so many opportunities to try new things, see new places and meet new people.

Jodie Kane, University of Leicester, UK





Albany

Immerse yourself in one of the most spectacular natural environments: experience rural and regional Western Australia while attending one of Australia's most prestigious universities

Albany, first settled in 1829, is Western Australia's oldest regional centre with all the facilities you would expect in a city but with the joys of country living. The Great Southern region has inspiring karri forests, the grandeur of the Stirling Ranges and the spectacular southern coastline. The region has many vineyards producing some of Australia's best wines. A mild climate, unspoilt natural beauty and rich cultural experiences make Albany a very special place to live and to visit. The town is 4.5 hours drive or 1 hour flight south of Perth. About 30,000 people live in town with another 20,000 in the surrounding region. There are daily flights to Perth with connections to the rest of Australia and overseas destinations.

UWA Albany offers the unique experience of studying at a small, non-metropolitan university centre and is particularly rewarding if you are interested in studies related to the natural environment. There are also many study opportunities similar to those offered at the UWA's main campus in Perth.

Study opportunities for study abroad and exchange students include:

- any unit which is available within the Bachelor of Science in Restoration Ecology (only available at Albany). The program contains units concerned with conserving the natural environment and restoring and rehabilitating damaged ecosystems. It covers land and water ecosystems and the

environmental, social, economic and political factors that shape restoration problems and their solutions. A unique feature of the program is its location in Albany, with a range of environments for field-based studies as well as opportunities for project placements with local agencies and community groups. Further information on units is available at: www.fnas.uwa.edu.au/for/prospective_undergrads/courses/restoration

- 'Arts Practicum' which is similar to an internship
- Summer units (January and February) in environmental science
- first year units are available in over 40 degree programs.

Further information is available at: www.albany.uwa.edu.au



Accommodation

There is a range of places to live in Albany, from the Middleton Beach area to facilities closer to the centre of town and the UWA Albany Centre. The Centre keeps a register of private accommodation, from furnished rooms to unfurnished houses.

Lifestyle

Student life in Albany is centred around the town and the amazing Great Southern region. Recreational activities include bushwalking, surfing, diving, climbing, whale-watching, wine-tasting and many sports such as year-round golf and tennis. Albany has a wide range of shops, a hospital, medical and dental facilities, and lots of cafés and bars. There are employment opportunities in town and on local farms and vineyards.

Student Services

Numerous services are provided by the UWA Albany Centre that help students throughout their time at university. At the UWA Albany Centre we aim to enable students to make the most of their opportunities at UWA, to support them in their personal development, and to help them achieve their life, learning and career goals.

For further information contact the UWA Albany Centre

Tel +61 8 9842 0888

Email Albany.Centre@uwa.edu.au

Useful websites:

www.albany.uwa.edu.au

www.international.uwa.edu.au

www.albanygateway.com.au



The UWA Albany Centre is housed in historic premises that were once the Post Office, Customs Office and Courthouse. First built in 1869 the building has been refurbished to accommodate its use as a university centre. Other UWA centres in Albany include the Centre of Excellence in Natural Resource Management focusing on research on the management of our natural resources; the Institute for Regional Development delivering postgraduate online courses in regional development; and the Rural Clinical School supervising fifth-year medicine students doing a rural placement.

Western Australia

That's not all ... further afield from Perth



There is much to explore because Western Australia (WA as the locals call it) is huge! To give you some idea, consider this: WA is bigger than the whole of Western Europe, four times the size of Texas in the USA, and Japan and the UK could fit comfortably within its borders with room to spare.

This vast landmass which takes up a third of Australia can be broken into several regions each with its own distinctive character:

Australia's South West

Towering forests, whale watching, world class surfing and wineries are just some of the features associated with this spectacular region. Linking the whole region is the Bibbulmun Track – a walk trail that stretches more than 1,000 kilometres from Perth to Albany. This is an adventure in itself and worth exploring.

Australia's North West

Sometimes referred to one of the world's last true wilderness areas and the last Australian frontier. Here you'll find rugged landforms, deep red gorges, vast cattle stations, and the highest density of Aboriginal rock art in the world. See the Bungle Bungle range, Karijini National Park... the list goes on and on...

Australia's Coral Coast

This regions contains WA's first World Heritage site – Shark Bay, most famous for the wild dolphins that come right into shore at Monkey Mia, and home to world's oldest living organisms - stromalites. The rugged terrain of Kalbarri National Park provides some amazing trekking and gives you the chance to capture some awesome scenery on film.

Golden Outback

Brilliant, starry night skies and wide open spaces with spinifex and red earth as far as the eye can see, describes this region of spectacular outback and goldfields. It's a place of historic townships, friendly pubs, gold mines and the beaches of the Southern Ocean where the seas can be wild one day and brilliant blue calm the next!

With so much to see, your biggest problem is going to be how to do it all while you're here!



Over the mid-semester break I went on the annual Outdoor Club mid-year trip. 22 of us piled into a rented bus, our stuff in the trailer pulled behind and headed off for three weeks in WA. We visited Newman (and met some "real Aussies"), Karijini National Park, Exmouth, Cape Range, Coral Bay, Monkey Mia, Kalbarri and the Pinnacles. It was a great experience, cheap, and left us with a lot of great friends, some Aussies, some not. I definitely recommend it!

Rebecca Hundt, University of California, Davis, USA

Download the details

If you want more information, simply go online. Everything you need to know is at your fingertips!

The University of Western Australia

The University of Western Australia
www.uwa.edu.au

Information for Future Students
www.studyat.uwa.edu.au

International Centre

International Centre
www.international.uwa.edu.au

English Language Studies

Centre For English Language Teaching
www.celt.uwa.edu.au

Information for students

Information for Future Students
www.studyat.uwa.edu.au

iPoint (FAQs)
www.ipoint.uwa.edu.au

Faculty handbooks (for course descriptions and regulations)
www.handbooks.uwa.edu.au

Principal dates (semester, exams)
www.publishing.uwa.edu.au/principaldates

Student Administration (enrolment, examinations and graduation)
www.studentadmin.uwa.edu.au

Student Services
www.studentservices.uwa.edu.au

Student Guild
www.guild.uwa.edu.au

UWA sports and recreation
www.sport.uwa.edu.au

UWA Graduates Association
www.graduates.uwa.edu.au

Faculties

Faculty of Architecture, Landscape and Visual Arts
www.alva.uwa.edu.au

Faculty of Arts, Humanities and Social Sciences
www.arts.uwa.edu.au

Faculty of Economics and Commerce (UWA Business School)
www.business.uwa.edu.au

Faculty of Education
www.education.uwa.edu.au

Faculty of Engineering, Computing and Mathematics
www.ecm.uwa.edu.au

Faculty of Law
www.law.uwa.edu.au

Faculty of Life and Physical Sciences
www.science.uwa.edu.au

Faculty of Medicine, Dentistry and Health Sciences
www.meddent.uwa.edu.au

Faculty of Natural and Agricultural Sciences
www.fnas.uwa.edu.au

Residential colleges

Currie Hall
www.currie.uwa.edu.au

St Catherine's College
www.stcatherines.uwa.edu.au

St George's College
www.stgeorgescollege.com.au

St Thomas More College
www.stmc.uwa.edu.au

Trinity
www.trinity.uwa.edu.au

Western Australia

Western Australian Government
www.wa.gov.au

Western Australian Tourism
www.westernaustralia.com

General information

The Good Universities Guide (Australia)
www.thegoodguides.com.au

Group of Eight
www.go8.edu.au

Australian Diplomatic Missions Overseas
www.dfat.gov.au/missions

Perth Education City
www.pertheducationcity.com.au

Australian Education International
aei.dest.gov.au

Department of Immigration and Citizenship
www.immi.gov.au

Information on student visas
www.immi.gov.au/students

OSHC Worldcare
www.oshcworldcare.com.au

TOEFL
www.toefl.org

IELTS
www.ielts.org

AusAID
www.ausaid.gov.au

| | |
|---|-----------------------------|
| ○ | STUDY ABROAD ORIENTATION |
| ● | UNIVERSITY ORIENTATION WEEK |
| ● | SEMESTER BEGINS |
| ● | MID SEMESTER BREAK |
| ● | SEMESTER CLASSES END |
| ● | STUDY/EXAMINATIONS |

Academic Calendar 2010 and 2011

2010

| | M | T | W | T | F | S | S | M | T | W | T | F | S | S | M | T | W | T | F | S | S | M | T | W | T | F | S | S | | | | | | | | |
|-----------|----|---|---|---|---|---|---|---|---|----|----|----|----|----|----|----|----|----|----|----|----|----|----|----|----|----|----|----|----|----|----|----|----|----|----|----|
| January | | | | | | 1 | 2 | 3 | 4 | 5 | 6 | 7 | 8 | 9 | 10 | 11 | 12 | 13 | 14 | 15 | 16 | 17 | 18 | 19 | 20 | 21 | 22 | 23 | 24 | 25 | 26 | 27 | 28 | 29 | 30 | 31 |
| February | 1 | 2 | 3 | 4 | 5 | 6 | 7 | 8 | 9 | 10 | 11 | 12 | 13 | 14 | 15 | 16 | 17 | 18 | 19 | 20 | 21 | 22 | 23 | 24 | 25 | 26 | 27 | 28 | | | | | | | | |
| March | 1 | 2 | 3 | 4 | 5 | 6 | 7 | 8 | 9 | 10 | 11 | 12 | 13 | 14 | 15 | 16 | 17 | 18 | 19 | 20 | 21 | 22 | 23 | 24 | 25 | 26 | 27 | 28 | 29 | 30 | 31 | | | | | |
| April | | | | | | 1 | 2 | 3 | 4 | 5 | 6 | 7 | 8 | 9 | 10 | 11 | 12 | 13 | 14 | 15 | 16 | 17 | 18 | 19 | 20 | 21 | 22 | 23 | 24 | 25 | 26 | 27 | 28 | 29 | 30 | |
| May | 31 | | | | | | 1 | 2 | 3 | 4 | 5 | 6 | 7 | 8 | 9 | 10 | 11 | 12 | 13 | 14 | 15 | 16 | 17 | 18 | 19 | 20 | 21 | 22 | 23 | 24 | 25 | 26 | 27 | 28 | 29 | 30 |
| June | | | | | | 1 | 2 | 3 | 4 | 5 | 6 | 7 | 8 | 9 | 10 | 11 | 12 | 13 | 14 | 15 | 16 | 17 | 18 | 19 | 20 | 21 | 22 | 23 | 24 | 25 | 26 | 27 | 28 | 29 | 30 | |
| July | | | | | | 1 | 2 | 3 | 4 | 5 | 6 | 7 | 8 | 9 | 10 | 11 | 12 | 13 | 14 | 15 | 16 | 17 | 18 | 19 | 20 | 21 | 22 | 23 | 24 | 25 | 26 | 27 | 28 | 29 | 30 | 31 |
| August | 31 | | | | | | 1 | 2 | 3 | 4 | 5 | 6 | 7 | 8 | 9 | 10 | 11 | 12 | 13 | 14 | 15 | 16 | 17 | 18 | 19 | 20 | 21 | 22 | 23 | 24 | 25 | 26 | 27 | 28 | 29 | 30 |
| September | | | | | | 1 | 2 | 3 | 4 | 5 | 6 | 7 | 8 | 9 | 10 | 11 | 12 | 13 | 14 | 15 | 16 | 17 | 18 | 19 | 20 | 21 | 22 | 23 | 24 | 25 | 26 | 27 | 28 | 29 | 30 | |
| October | | | | | | 1 | 2 | 3 | 4 | 5 | 6 | 7 | 8 | 9 | 10 | 11 | 12 | 13 | 14 | 15 | 16 | 17 | 18 | 19 | 20 | 21 | 22 | 23 | 24 | 25 | 26 | 27 | 28 | 29 | 30 | 31 |
| November | | | | | | 1 | 2 | 3 | 4 | 5 | 6 | 7 | 8 | 9 | 10 | 11 | 12 | 13 | 14 | 15 | 16 | 17 | 18 | 19 | 20 | 21 | 22 | 23 | 24 | 25 | 26 | 27 | 28 | 29 | 30 | |
| December | | | | | | 1 | 2 | 3 | 4 | 5 | 6 | 7 | 8 | 9 | 10 | 11 | 12 | 13 | 14 | 15 | 16 | 17 | 18 | 19 | 20 | 21 | 22 | 23 | 24 | 25 | 26 | 27 | 28 | 29 | 30 | 31 |

2011

| | M | T | W | T | F | S | S | M | T | W | T | F | S | S | M | T | W | T | F | S | S | M | T | W | T | F | S | S | | | | | | | | | | |
|-----------|----|----|---|---|---|---|---|---|---|----|----|----|----|----|----|----|----|----|----|----|----|----|----|----|----|----|----|----|----|----|----|----|----|----|----|----|----|----|
| January | 31 | | | | | | | 1 | 2 | 3 | 4 | 5 | 6 | 7 | 8 | 9 | 10 | 11 | 12 | 13 | 14 | 15 | 16 | 17 | 18 | 19 | 20 | 21 | 22 | 23 | 24 | 25 | 26 | 27 | 28 | 29 | 30 | |
| February | | | | | | 1 | 2 | 3 | 4 | 5 | 6 | 7 | 8 | 9 | 10 | 11 | 12 | 13 | 14 | 15 | 16 | 17 | 18 | 19 | 20 | 21 | 22 | 23 | 24 | 25 | 26 | 27 | 28 | | | | | |
| March | | | | | | 1 | 2 | 3 | 4 | 5 | 6 | 7 | 8 | 9 | 10 | 11 | 12 | 13 | 14 | 15 | 16 | 17 | 18 | 19 | 20 | 21 | 22 | 23 | 24 | 25 | 26 | 27 | 28 | 29 | 30 | 31 | | |
| April | | | | | | 1 | 2 | 3 | 4 | 5 | 6 | 7 | 8 | 9 | 10 | 11 | 12 | 13 | 14 | 15 | 16 | 17 | 18 | 19 | 20 | 21 | 22 | 23 | 24 | 25 | 26 | 27 | 28 | 29 | 30 | | | |
| May | 30 | 31 | | | | | | | 1 | 2 | 3 | 4 | 5 | 6 | 7 | 8 | 9 | 10 | 11 | 12 | 13 | 14 | 15 | 16 | 17 | 18 | 19 | 20 | 21 | 22 | 23 | 24 | 25 | 26 | 27 | 28 | 29 | |
| June | | | | | | 1 | 2 | 3 | 4 | 5 | 6 | 7 | 8 | 9 | 10 | 11 | 12 | 13 | 14 | 15 | 16 | 17 | 18 | 19 | 20 | 21 | 22 | 23 | 24 | 25 | 26 | 27 | 28 | 29 | 30 | | | |
| July | | | | | | 1 | 2 | 3 | 4 | 5 | 6 | 7 | 8 | 9 | 10 | 11 | 12 | 13 | 14 | 15 | 16 | 17 | 18 | 19 | 20 | 21 | 22 | 23 | 24 | 25 | 26 | 27 | 28 | 29 | 30 | 31 | | |
| August | 1 | 2 | 3 | 4 | 5 | 6 | 7 | 8 | 9 | 10 | 11 | 12 | 13 | 14 | 15 | 16 | 17 | 18 | 19 | 20 | 21 | 22 | 23 | 24 | 25 | 26 | 27 | 28 | 29 | 30 | 31 | | | | | | | |
| September | | | | | | 1 | 2 | 3 | 4 | 5 | 6 | 7 | 8 | 9 | 10 | 11 | 12 | 13 | 14 | 15 | 16 | 17 | 18 | 19 | 20 | 21 | 22 | 23 | 24 | 25 | 26 | 27 | 28 | 29 | 30 | | | |
| October | 31 | | | | | | | | 1 | 2 | 3 | 4 | 5 | 6 | 7 | 8 | 9 | 10 | 11 | 12 | 13 | 14 | 15 | 16 | 17 | 18 | 19 | 20 | 21 | 22 | 23 | 24 | 25 | 26 | 27 | 28 | 29 | 30 |
| November | | | | | | 1 | 2 | 3 | 4 | 5 | 6 | 7 | 8 | 9 | 10 | 11 | 12 | 13 | 14 | 15 | 16 | 17 | 18 | 19 | 20 | 21 | 22 | 23 | 24 | 25 | 26 | 27 | 28 | 29 | 30 | | | |
| December | | | | | | 1 | 2 | 3 | 4 | 5 | 6 | 7 | 8 | 9 | 10 | 11 | 12 | 13 | 14 | 15 | 16 | 17 | 18 | 19 | 20 | 21 | 22 | 23 | 24 | 25 | 26 | 27 | 28 | 29 | 30 | 31 | | |

Location Map



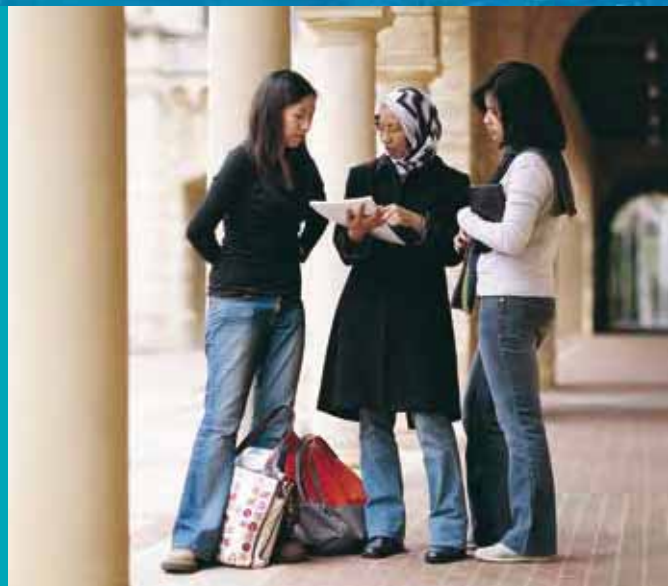


| | |
|--|--------------------------|
| | NIGHTLIFE |
| | GROCERIES |
| | RESTAURANT |
| | CAFÉS |
| | RESIDENTIAL COLLEGES |
| | SHOPPING |
| | SCENERY |
| | OUTDOOR RECREATION |
| | PARKS AND SPORTING AREAS |
| | WATERSPORTS |

10 mins to Subiaco and Leederville ↑
 10 mins to Cottesloe Beach & Claremont ←

Map labels: VINCENT ST, CAMBRIDGE ST, FREE WAY, ROBERTS RD, HA ST, WELLINGTON ST, MURPHY ST, HAY ST, NORTHBRIDGE, PERTH CITY, WILLIAM ST, BEAUFORT ST, WELLINGTON ST, MURPHY ST, HAY ST, RIVERSIDE DR, MILL POINT RD, SWAN RIVER, MOUNTS BAY RD, KINGS PARK, STIRLING HWY, WINTHROP AVE, UWA, ROCKEY RD, RAILWAY RD, THOMAS, KINGS PARK RD.







THE UNIVERSITY OF
WESTERN AUSTRALIA
Achieving International Excellence

Study Abroad Office, International Centre

The University of Western Australia
M352, 35 Stirling Highway, Crawley, Perth, Western Australia 6009

Tel +61 8 6488 8199

Fax +61 8 9382 4071

Email studyabroad@admin.uwa.edu.au

Web www.studyat.uwa.edu.au

CRICOS Provider Code: 00126G

Australian Federal Government legislation requires providers of courses to prospective student visa holders to register their institution and the courses they offer. This register is called the Commonwealth Register of Institutions and Courses for Overseas Students (CRICOS). The WA Department of Education Services. approves registration before a code is allocated and the details recorded on the CRICOS register. Providers and their agents must not promote a course to prospective student visa holders unless it is registered on CRICOS.

Your Local Contact:

ieconline GmbH
Marienstrasse 19/20, D-10117 Berlin
Tel. +49 (0)30-20458687
www.ieconline.de