

2010 GRADUATE PROGRAMS





Cover image:

Denham's Beach I, 2007, eucalyptus leaves, silk, stitch, 11 x 9 cm, by Sally Blake, ANU graduate Bachelor of Visual Arts (Honours).

All natural textures on the page frames are from photos taken on the ANU campus.

Published by Student Recruitment, The Australian National University.

No undertakings are binding on the University unless they are obtained in an official letter from the Registrar. The University may vary the entrance requirements, content and availability of programs, and costs and charges applied to the programs outlined in this publication. The University reserves the right to change the contents of programs and not to offer all programs listed in this publication.

ANU CRICOS Provider Number: 00120C

WELCOME TO ANU



ANU has approximately 15,000 students from all walks of life.

The decision about which university you choose for graduate study is a serious one and you need to be as well informed as possible. This publication is designed to help you with the decision making process.

Why choose The Australian National University?

ANU is consistently rated Australia's best university and among the best in the world.*



ANU has strong links with leading international universities that enable joint research programs, shared graduate study options and exchanges. ANU is the only Australian member of the International Alliance of Research Universities (IARU). Other members of IARU are: ETH Zurich, the National University of Singapore, Peking University, the University of California, Berkeley, the University of Cambridge, the University of Copenhagen, the University of Oxford, the University of Tokyo and Yale University.

The unique research focus of ANU provides unparalleled opportunities to learn from and work with some of Australia's leading minds, and gives you access to quality research and learning facilities.

Located in the nation's capital, Canberra, ANU students study within the hub of Australian government and benefit from the strong partnerships ANU has with government, business and other national institutions.

The ANU campus is diverse, with approximately 15,000 students from all walks of life: mature age, part-time, graduate and school leavers from all states and territories in Australia and international students from 100 different countries.

These are just some of the reasons ANU can offer you a great graduate study experience.

I encourage you to fully explore this publication and use it as a starting point in finding out more about what we offer.

Professor Ian Chubb AC
Vice-Chancellor

* *The Times Higher Education Supplement* 2008



ABOUT ANU



Union Court featuring 'Spirit of Enquiry', a colourful ceramic installation by Deborah Halpern.

ANU has been at the leading edge of Australian and International research since it was established in 1946. It continues to attract some of the best staff and students from Australia and the world. Its teaching programs are ranked among the world's best, research conducted in its colleges has been recognised with Nobel prizes, and its international links include sole Australian membership of the International Alliance of Research Universities (IARU).

The primary campus is self-contained with low-rise buildings set in 145 hectares of parkland. There are bus connections to the city (which is about a 10 minute walk away) and suburbs.

The University has state-of-the-art facilities including the ANU Library, which has four main and several branch locations. Together they contain over two million print items, 53,000 electronic journals and over 150 electronic databases. ANU students are also able to access resources at the surrounding national institutions, including the National Library of Australia.

The ANU campus houses a range of shops and restaurants, catering for all tastes and budgets. There are over 100 clubs and societies on campus.

As a student you will find ANU offers a dynamic academic and social life. Some of the student support services include:

- Academic Skills and Learning Centre
- Careers Centre
- Chaplains
- Child Care
- Counselling Centre
- Dean of Students
- Disability Support Centre
- Graduate Information Literacy Program
- Health Services
- International Office
- Jabal Indigenous Higher Education Centre
- Learning Communities
- Muslim Students' Centre
- Postgraduate and Research Students' Association (PARSA)
- Research Student Development Centre
- Student Mobility
- Student Information and Guidance Network (SIGN)
- University Library
- University Security

Did you know?

- ANU is Australia's highest ranked university and among the world's best (Ranked 1st in Australia and 16th in the world by *The Times Higher Education Supplement*, 2008).
- ANU is the only Australian member of the International Alliance of Research Universities (IARU).
- Eighty per cent of academics at ANU have a PhD.
- There are over two million volumes in the ANU Library.
- The main ANU campus has over 200 buildings and occupies 145 hectares, within a 10 minute walk of the city.
- ANU has a coastal campus – Kioloa – located near Bawley Point on the NSW South Coast.
- There are over 10,000 trees on the ANU campus.
- The oldest building on the ANU campus is Old Canberra House, built in 1913.



CRIMINAL MINDS

Dr Sigi Goode

Researcher

ANU College of Business and Economics

A recent survey of software adoption and use indicated that software piracy accounts for 35 per cent of the worldwide market and costs the technology industry almost 40 billion dollars per year.

But few people give thought to the difficult work of the software cracker that comes first. After hours of effort to remove the copy protection, crackers usually receive no tangible benefit, cannot reveal their identity and face a serious risk of prosecution. With so many negatives and no obvious benefits, what makes them break the law?

ANU Colleges

ANU has seven Colleges, made up of the research and education centres, schools and faculties that contribute to broad discipline areas. Graduate students pursue their degrees in the College appropriate to their program or research area.

ANU College of Arts and Social Sciences

- Australian Demographic and Social Research Institute
- Australian National Internships Program
- Centre for Aboriginal Economic Policy Research
- Centre for Educational Development and Academic Methods
- Faculty of Arts
- Research School of Humanities
- Research School of Social Sciences

ANU College of Asia and the Pacific

- Asia Pacific College of Diplomacy
- Crawford School of Economics and Government
- Faculty of Asian Studies
- Research School of Pacific and Asian Studies

ANU College of Business and Economics

- School of Accounting and Business Information Systems
- School of Economics
- School of Finance and Applied Statistics
- School of Management, Marketing and International Business

ANU College of Engineering and Computer Science

- Faculty of Engineering and Information Technology
- Research School of Information Sciences and Engineering

ANU College of Law

- Law School
- Legal Workshop
- National Institute for Social Sciences and Law

ANU College of Medicine, Biology and Environment

- ANU Medical School
- Fenner School of Environment and Society
- Institute of Population Health
- The John Curtin School of Medical Research
- School of Biology
- School of Health and Psychological Sciences

ANU College of Physical Sciences

- Centre for the Public Awareness of Science
- Mathematical Sciences Institute
- Research School of Astronomy and Astrophysics
- Research School of Chemistry
- Research School of Earth Sciences
- Research School of Physics and Engineering

The ANU Colleges link research and teaching at undergraduate, graduate and higher degree levels, and give the base to achieve research at the highest standards of excellence, educational programs informed by current research and active researchers that give students a memorably good experience of ANU.



Union Court during Market Day, which is held every Thursday in term time.

It was this question that Dr Sigi Goode from the ANU College of Business and Economics set out to answer. "I just found it so interesting that, despite the massive penalties attributable to these sorts of endeavours, it continues," he says.

With former ANU Honours student Sam Cruise, Goode developed a questionnaire survey about crackers' motivation and justification, with an option to provide demographic information (while remaining anonymous).

The survey results overwhelmingly indicated that the challenge raised by the difficulty of removing copy protection is the principal motivating factor for software crackers, which Goode says is a tricky catch-22 for software companies.

Goode believes there is more to be done in this area of research, particularly in getting answers from those crackers who previously refused to take part in the initial study.

"No matter what we said, there were some people who were convinced that we were law enforcement. There is an element of paranoia at play there and it's possible that these people have different perspectives to bring.

And beyond the software cracking, Goode believes the research framework can be applied to any number of types of deviant behaviour. "We're interested in using the same method to explore other situations where other people may want to hide their identity. Few people will say they break the law except in situations without personal cost, which is what we can provide. For my money, right now, that's the big thing to move forward."

ABOUT CANBERRA



Parliament House is a major Canberra landmark.

The Bush Capital

Canberra, Australia's national capital, is an open-planned city nestled in a picturesque natural setting. With a history spanning just over 80 years, Canberra offers a vibrant, cosmopolitan lifestyle with a high concentration of national museums and galleries, as well as cafés and restaurants. Its population of 335,000 is a small, highly educated, and multicultural community, which provides the city with an international flavour without compromising the relaxed atmosphere central to its design.

Canberra was designed by Chicago architect Walter Burley Griffin. A lake bearing his name is the centrepiece of his design, and provides a stunning backdrop for the Parliamentary Triangle, which has become Canberra's historical and cultural centre.

Canberra is home to Australia's Parliament and diplomats from over 120 countries. Parliament House is just one of several distinctive architectural features, which include the High Court of Australia, the National Gallery of Australia, the National Museum of Australia, the War Memorial, Questacon – The National Science and Technology Centre, the Australian Institute of Sport. These and many other national institutions provide a cultural and political backdrop, as well as a host of resources for students.

Surrounded by stunning nature reserves, the 'bush capital' is a planned city integrated into the natural environment. This allows Canberrans to quickly escape the city and enjoy scenic walking tracks and cycling paths. Within a few hours drive are the beautiful beaches of the NSW South Coast, the Snowy Mountains, southern region wineries and the city of Sydney. Canberra's climate is marked by blue skies and sunshine. In July, the coldest month of the year, the average temperature range is from 0 to 11 degrees celsius (31 to 52 degrees fahrenheit). In January, the hottest month of the year, temperatures range from 13 to 28 degrees celsius (56 to 80 degrees fahrenheit).

For more information on Canberra, please visit:

- Virtual Canberra - www.virtualcanberra.gov.au/
- Visit Canberra - www.visitcanberra.com.au/
- *The Canberra Times* - canberra.yourguide.com.au
- All Homes (real estate information) - allhomes.com.au



OPERATION VISION

Ramtin Shams

PhD candidate

ANU College of Engineering and Computer Science

Imagine the benefits of seeing through the body of a patient during an operation and being able to look at high quality three dimensional (3D) images of anatomical structures such as tissues, bones, vasculature, and tumours in real-time.

This is the future of image guided intervention in surgical procedures and according to Ramtin Shams, a PhD candidate at ANU, such technology is not only plausible, but also close to development.

Shams, from the ANU College of Engineering and Computer Science, is hoping to develop an intelligent scanner that uses new image processing technology to create an unparalleled three-dimensional real-time view, making surgery patients virtually see-through.

High quality 3D medical imaging technologies such as magnetic resonance imaging (MRI) and computed tomography (CT) are typically used pre-operatively for surgical planning. Imaging technologies that are available during operations have a more limited field of view and image quality.

Shams hopes to combine images taken before surgery with images used during the procedure to give surgeons a clearer representation of the organ they're working on.

"Registration is a problem frequently encountered in medical-image analysis," Shams says. "It's often required to align images acquired by different imaging devices and techniques. Images obtained by various medical imaging techniques – multi-modal images – often depict information of complementary nature. For example,

CHOOSING A GRADUATE PROGRAM

What type of study do I want to do?

At ANU, graduate students may complete their program through coursework or research or a combination of coursework and research, depending on the specific program. The coursework and research components of any program are determined at a program level. To be certain about program requirements, you must refer to the specific requirements of that program.

Graduate Coursework

Graduate coursework generally results in the awarding of a Master degree, a Graduate Diploma, or a Graduate Certificate. Each of these awards requires different standards and quantities of work. The major component of the program is attendance at lectures and tutorials, and submitting assessment items, such as essays and assignments. Some coursework programs may also involve a research component, where students work with the assistance of supervisors on a more substantial project which involves the submission of a thesis as part of the assessment. The Professional Doctorate is classified as a coursework degree, even though two thirds or more of the program may be research.

Admission to a graduate coursework degree will usually require a candidate to have completed an undergraduate degree with at least a credit grade average (ie 60 per cent). Some graduate coursework degrees require applicants to have completed an Honours degree (at second class A level or above).

Graduate Studies Select

Graduate Studies Select is a new option for graduate coursework studies at ANU. It recognises that graduate students have a range of needs which cannot always be met by following a program of study in a single academic discipline. Subject to meeting course entry requirements, you will be able to select courses from across the graduate course offerings available. For example, you could construct a program of study comprising courses in art history, environmental science, finance and management. More information on Graduate Studies Select can be found on page 24.

Graduate Research

Students who want to undertake a program of graduate research study at ANU can do so through a Doctor of Philosophy (PhD) or a Master of Philosophy (MPhil). The major component of a research program is a substantial written work, known as a thesis, which investigates a particular subject or issue. A research student works more independently, but is under the direction of an academic supervisor or a supervisory panel of academic staff.

Generally, admission to a research degree requires an Honours degree (at upper second class level or above) or equivalent prior study, including research work. Equivalent study differs from area to area but it can include a Graduate Diploma or a Master qualifying course, or a Master degree with some research work at a sufficient standard. Candidates with other qualifications and experience that include research may be considered for admission. In some discipline areas, students complete a graduate coursework degree in which there is a significant research component to become eligible for a research degree and scholarship.

Doctor of Philosophy (PhD)

PhD degrees normally take between two and four years full-time or up to eight years part time. Students are generally required to submit a thesis of up to 100,000 words that makes a substantial contribution to the relevant scholarly literature and demonstrates how their research relates to their discipline. In some programs, PhD candidates are required to complete coursework as well as a thesis.

Master of Philosophy (MPhil)

MPhil degrees normally take between one and two years full-time to complete. The MPhil thesis is normally limited to 60,000 words.

CT scans are useful for depicting hard structures such as bones and calcifications within the subject, while MRI is best suited for evaluating soft tissue.

"In clinical applications, it's essential to combine useful data from different image modalities to assist in diagnosis, treatment planning, evaluation of surgical and therapeutical procedures and for image guided surgery."

Shams believes that introducing a hybrid of CT, MRI and ultrasound techniques could be key in creating a more detailed form of intra-operative imaging.



Ramtin Shams

APPLICATION FOR ADMISSION

How do I apply for a coursework degree?

Admission requirements and deadlines vary depending on the program for which you are applying and your status.

If you are a citizen or permanent resident of Australia or a citizen of New Zealand, you are classified as a 'domestic' student. Domestic coursework students apply either direct to ANU or through the Universities Admissions Centre (UAC), depending on the program. Specific requirements are listed in the Graduate Coursework Programs table on pages 11-19.

If you are not a citizen or permanent resident of Australia or a citizen of New Zealand, you are classified as an 'international' student. International students apply direct to ANU.

Direct Applications

If you are asked to apply direct to ANU, you can apply online or download forms and submit them as hard copies. If you are an international student, you will apply direct to ANU, regardless of the degree program for which you are applying, and you will be required to pay an application fee of A\$100 (hard copy) or A\$75 (online).

Online: students.anu.edu.au/apply_online.asp

Hardcopy: www.anu.edu.au/sas/admission/index.php#applic

ANU Admissions Office

T: +61 2 6125 5594

E: admiss.enq@anu.edu.au

W: www.anu.edu.au/sas/admission

Applications through the Universities Admissions Centre

Some domestic coursework students will be asked to apply through the Universities Admissions Centre (UAC). Details and application procedures can be found by contacting:

Universities Admissions Centre

T: 02 9752 0200

W: www.uac.edu.au

How do I apply for a research degree?

To be eligible for consideration of admission to a research degree at ANU, you must already have an Australian bachelor degree with at least upper second class Honours (first class Honours is usually required) or its international equivalent, or a Graduate Diploma or Master degree with a significant research thesis component, and there must be a supervisor or convener at ANU willing to accept you as a student.

There are three main steps you need to follow in order to submit a complete application.

Step 1 - Expression of Interest

You will need to determine if ANU offers research in your chosen area and identify the relevant Graduate Studies Field for you. A list of the Graduate Studies Fields at ANU can be found on pages 20-23 (full details can be found on the Graduate Study@ANU website: www.anu.edu.au/graduate)

Email the Graduate Studies Convener for advice about the preapplication process for your Graduate Studies Field (some areas require a short description of your proposed area of research as an 'expression of interest' and a summary of your academic qualifications - including grades - other areas require additional information). Do not submit a research proposal at this stage.

If you are advised there is a supervisor or convener interested in your application you may proceed to a full application. Please note



The main ANU campus occupies 145 hectares, within a five minute bike ride of the city.

that you should only complete a full application if you are advised that there is a supervisor available in your area. Should you apply without this endorsement, it may mean that your application is unable to be given priority to be processed further.

Step 2 - Application

Research applications are made directly to ANU either online or by downloading and submitting hard copy forms:

- Online - International applicants will be required to pay a A\$75 application processing fee.
Go to http://students.anu.edu.au/apply_online.asp
- Download hardcopy form - International applicants will be required to pay a A\$100 application processing fee.
Go to www.anu.edu.au/sas/admission



The ANU Library comprises nine buildings on campus and contains over two million volumes.

On your application form, please indicate your proposed supervisor or the convener who has indicated an interest in your application. Before submitting the application to ANU, please arrange for your referees to complete the required information and submit it directly to the University.

Once you have submitted your completed application (including all supporting documentation), your application will be processed and assessed. Please note that if you are also applying for a research scholarship, your application may be held over until the next available scholarship round.



Unilodge provides apartment-style accommodation on campus.

Step 3 – Scholarships

There are a small number of international graduate research scholarships available at ANU each year. These are awarded to outstanding students (eg ranked in the top five per cent of applicants) and are extremely competitive. You may need to submit additional application forms for ANU research scholarships. For full details and application deadlines visit the Scholarships and Prizes website at

www.anu.edu.au/scholarships

You must indicate on your admission application form whether you still wish to be considered for admission if your application for a scholarship is unsuccessful. You should talk to your nominated supervisor about any other source of funding you might access, and advise the University regarding any external funding applications you have made.

If you are applying for mid-year entry to a research program, your chances of obtaining scholarship funding from the University may be greatly diminished, depending on your area of research. If you wish to be considered in the main scholarship round, you should apply for admission by 31 August.

Research students are allowed to work up to 20 hours per week. This will generally not cover living expenses and tuition fees and we strongly advise you to ensure that you will be able to meet the cost of living (go to http://info.anu.edu.au/studyat/International_Office/getting_in/_costofliving)

English Language requirements

You are required to demonstrate an adequate standard of English before you can be accepted for admission. Unless your undergraduate studies were undertaken and examined in English you will normally have to sit an English Language Test. Further information can be found at: http://policies.anu.edu.au/policies/english_language_admission_requirements_for_students/policy

How do I accept my offer?

Once your application has been approved by ANU, you will receive an emailed offer, which includes information on how to accept your offer.

Student visas

If you are an international student, once you have met all conditions, returned your Offer Acceptance Declaration and paid your deposit, you will be provided with information about your electronic Confirmation of Enrolment (eCOE) form, which you will need in order to apply for a student visa.

In some countries, visa processing takes considerable time. You may be required to undertake pre-visa assessment prior to payment of fees and issue of the eCOE. For more information on visa requirements and the issuing process, please contact the Australian embassy in your home country or go to: www.immi.gov.au



Orientation Week (O Week) is an opportunity for students to explore the campus, enrol and settle into university life before they commence studies.

COSTS

How much will my degree cost?

Tuition fees are charged to all students: however, the level of the fee and whether deferral or government loans are available depends on your citizenship, residency status, unit load, year of commencement and the level of the program enrolled in. Full details can be found at: www.anu.edu.au/sas/fees/index.php

If you are an international student, you can request an International Fee Schedule from the ANU Admission Office, or an ANU representative.



Students outside the Union building.

Graduate Coursework Degree Programs – Indicative Annual Tuition Fees 2009								
ANU COLLEGE OF	GRADUATE CERTIFICATE HALF YEAR FULL TIME		GRADUATE DIPLOMA 1 YEAR FULL TIME		MASTER BY COURSEWORK 1 YEAR FULL TIME		MASTER BY COURSEWORK 2 YEARS FULL TIME*	
	Domestic tuition fee	International tuition fee	Domestic tuition fee	International tuition fee	Domestic tuition fee	International tuition fee	Domestic tuition fee	International tuition fee
Arts & Social Sciences	\$7,200	\$11,400	\$10,800- \$16,800	\$17,100- \$24,000	\$14,400- \$16,800	\$22,800- \$24,000	\$10,800pa* - \$14,400pa*	\$17,100pa* - \$22,800pa*
Asia & the Pacific	\$8,400- \$11,400	\$8,400- \$12,600	\$14,400- \$22,800	\$17,100- \$25,200	\$16,000- \$22,800	\$21,600- \$26,400	\$16,800pa*	\$24,000pa*
Business & Economics	\$10,200	\$11,400	\$20,400	\$17,100- \$22,800	\$20,400	\$22,800	\$20,400pa*	\$22,800pa*
Engineering & Computer Science	NA	NA	NA	NA	\$19,200	\$22,800	\$19,200pa*	\$22,800pa*
Law	\$8,400	\$10,800	\$12,600	\$16,200	\$16,800	\$21,600	\$16,800pa*	\$21,600pa*
Medicine, Biology & Environment	\$11,400	\$11,400	\$22,800	\$22,800- \$26,400	\$22,800	\$22,800	\$22,800pa*	\$22,800pa* - \$24,000pa*
Physical Sciences	\$11,400	\$11,400	\$22,800	\$22,800- \$26,400	\$22,800	\$22,800	\$22,800pa*	\$22,800pa* - \$24,000pa*

If you are a citizen or permanent resident of Australia or a citizen of New Zealand, you are classified as a 'domestic' student. If you do not fall into one of these categories, you are classified as an 'international' student.

The indicative annual tuition fees listed here are in Australian dollars and are for your guidance only, as the actual tuition fee you will pay will depend on the courses you choose and the number of units required for the successful completion of your program. Prices quoted are for 2009. Some graduate coursework programs may be available for eligible domestic students as Commonwealth supported places.

*Please note that the indicative annual fees (pa = per annum) listed in this table are for *one* year of full time study only. The indicative costs for a graduate coursework program that is two years in duration can be estimated by doubling the indicative annual fee and adding five per cent to the second year of fees (any tuition fee increases at ANU are capped at five per cent, compounded annually, of the annual tuition fee applicable in the year of admission to the program).

For full tuition fee details, please visit: www.anu.edu.au/sas/fees

MONKEY BUSINESS

Vanessa Woods

Alumna

ANU College of Physical Sciences

Vanessa Woods studied literature and marine biology before doing a Graduate Certificate in Science Communication at the Centre for the Public Awareness of Science (CPAS) at ANU.

The degree gave her new skills in science writing and research, and acted as a stepping stone to her later success in science communication.

"The CPAS degree was amazing. There's nothing else like it around", Vanessa says. "I'd barely written anything before the degree, but now, four years after finishing it, I've written four books and for all sorts of international publications."

In addition to her writing, her experience at ANU has launched Vanessa into television appearances on the ABC's *Catalyst* program and the Lifestyle channel.

After volunteering at Taronga Zoo and spending time in Uganda on a chimpanzee research trip, the call of the wild had already struck a chord with Vanessa. But what struck next – a messy break up with her long-term boyfriend – left her in emotional turmoil.

Instead of devouring a bucket of ice cream and spending a month in bed, she jumped on a plane and headed off to the Central American jungle of Costa Rica. "I'm often asked, 'How did a girl like you end up in Costa Rica?'" Vanessa says. "I got dumped. Quit my job, packed a bag and went to study monkeys I knew nothing about."

Vanessa documented her experience in Costa Rica in a book, *It's Every Monkey for Themselves*, in which she combines scientific study with personal experience.

Graduate Research Degree Programs – Indicative Annual Tuition Fees 2009

	MASTER OF PHILOSOPHY (MPHIL) 1-2 YEARS FULL TIME	DOCTOR OF PHILOSOPHY (PHD) 2-4 YEARS FULL TIME
ANU COLLEGE OF	International Tuition Fee	International Tuition Fee
Arts & Social Sciences	\$20,400-\$28,800	\$20,400-\$28,800
Asia & the Pacific	\$20,400-\$28,800	\$20,400-\$28,800
Business & Economics	\$28,800	\$28,800
Engineering & Computer Science	\$24,000	\$24,000
Law	\$21,600	\$21,600
Medicine, Biology & Environment	\$24,000	\$24,000
Physical Sciences	\$24,000	\$24,000

If you are a citizen or permanent resident of Australia or a citizen of New Zealand, you are classified as a 'domestic' student. If you do not fall into one of these categories, you are classified as an 'international' student.

The University currently enrolls domestic Research students under the Research Training Scheme (RTS), which is funded by the Commonwealth. RTS funded students are not required to contribute to the cost of their tuition for the duration of their program.

The indicative annual tuition fees listed here are in Australian dollars and are for your guidance only, as the actual tuition fee you will pay will depend on the number of units required for the successful completion of your program. Prices quoted are for 2009.

For full tuition fee details, please visit: www.anu.edu.au/sas/fees

Today she's working on conservation projects for the bonobo, a cousin of the chimpanzee, in the Democratic Republic of Congo.

To save the bonobo, Vanessa sees respect and education as the key. "Hundreds of Congolese school children are now coming through Lola ya Bonobo Sanctuary every year," she says. "These animals are Congolese, so it's fantastic to see that kids are being educated to respect the animals and be proud of them." Furthermore, the Democratic Republic of Congo has recently held its first democratic election, and is coming out of 10 years of civil war. "As a result, I hope more is done to save the bonobo from now on", Vanessa says.

Right: Vanessa Woods with a bonobo

A guide to living expenses

The following budget can be used as a guide for a single student living on campus in self-catered, apartment-style or catered accommodation, or off-campus in shared accommodation. It does not provide major items like cars, computers, extra curricula activities or holidays.

NOTE: All figures in this table are in Australian dollars. They are estimates only and may vary depending on market conditions.

	SELF-CATERED	APARTMENT-STYLE*	FULLY-CATERED	OFF-CAMPUS*
Weekly Expenses				
Rent (includes water & power)	157	204	287	185*
Food	80	80		80
Day meals (on campus)	35	35		35
Public transport				25
Sub total	272	319	287	325
For 42 Academic Weeks	11,424	13,398	12,054	13,650*
Monthly Expenses				
Books, stationery, photocopying, postage	85	85	85	85
Telephone calls	20	20	20	20
Clothes & entertainment	200	200	200	200
Sub total	305	305	305	305
For 42 Academic Weeks	3,203	3,203	3,203	3,203*
Overall				
For 42 Academic Weeks	14,627	16,601	15,257	16,853*

*When renting off-campus or apartment-style accommodation on campus, you will usually be asked to sign a 52 week lease.

*Based on sharing a three bedroom house with two other residents within 30 minute commuting time by public transport to the ANU campus.



OTHER APPLICATIONS

What other things do I need to apply for?

Scholarships

There are a range of graduate research and graduate coursework scholarships available for ANU students. You may need to submit a separate application for any scholarship in which you are interested.

Scholarships and Prizes Office

T: +61 2 6125 7254

E: graduate.scholarships@anu.edu.au

W: www.anu.edu.au/scholarships



ANU is a multicultural campus with international students from over 100 different countries.

Accommodation

Graduate students have a variety of options when it comes to accommodation. There are a number of graduate residences on campus, ANU rental properties, as well as living off-campus in a rental property or share accommodation. You can apply for on campus accommodation or ANU rental properties through the University Accommodation Services (UAS) – there is no fee to apply online and no penalty if you decide to live elsewhere. Don't wait for your offer of admission before applying for accommodation – apply as early as possible. As the graduate residences on campus

and ANU rental properties are in high demand, and accommodation cannot be guaranteed, students are advised to investigate external accommodation as well. Do not arrive in Canberra without confirmed accommodation.

University Accommodation Services

T: +61 2 6125 1100

E: uni.accom@anu.edu.au

W: accom.anu.edu.au/UAS/186

External accommodation in Canberra

www.allhomes.com.au

www.domain.com.au

www.ljhooker.com.au

Childcare

While there are four childcare centres that serve ANU students and staff, long waiting lists exist in all centres, so contact them well in advance of your arrival on-campus. Don't wait for your offer of admission before applying for childcare.

Acton Early Childhood Centre

T: +61 2 6125 5554

E: aecc@anu.edu.au

W: www.anu.edu.au/childcare/aecc/index.php

Heritage Early Childhood Centre

T: +61 2 6125 2976

E: hecc@anu.edu.au

W: www.anu.edu.au/childcare/heritage

University Preschool and Child Care Centre

T: +61 2 6125 4113

E: unipresc@iimetro.com.au

W: www.anu.edu.au/childcare/preschool

Central Canberra Family Day Care

T: +61 2 6125 2000

E: info@familydaycarec.com.au

Full details can be found at: info.anu.edu.au/StudyAt/International_Office/student_life/Non_School_Aged_Childcare.asp



WITH THE GRAIN

Megan Hemming

Alumna

ANU College of Medicine, Biology and Environment

Prior to starting her Postdoctoral Research Fellowship with CSIRO Plant Industry, Megan Hemming undertook her PhD studies in the Plant Cell Biology group at the Research School of Biological Sciences (RSBS - now part of the School of Biology) under the supervision of Dr David Jones. During this time she studied a tomato disease caused by the fungus 'Fusarium oxysporum' with the aim of isolating the resistance gene.

After completing her undergraduate and masters degrees at the University of Auckland in New Zealand, Megan chose to do her PhD

GRADUATE COURSEWORK DEGREE PROGRAMS

Degree Program

All degree programs in the graduate coursework table on the following pages are colour coded to indicate which of the seven ANU Colleges administer the program.

ANU College of Arts and Social Sciences
ANU College of Asia and the Pacific
ANU College of Business and Economics
ANU College of Engineering and Computer Science
ANU College of Law
ANU College of Medicine, Biology and Environment
ANU College of Physical Sciences

Full details on each of these degree programs can be found by visiting the Graduate Study@ANU website (www.anu.edu.au/graduate), or by contacting the ANU Colleges – see the contacts listing on page 25.

All degree programs in this table are available to international students at time of publication. CRICOS codes for individual degree programs are available at: www.anu.edu.au/sas/fees/index.php

Duration

A one year, full time degree program will usually comprise two semesters of study (or equivalent). Similarly, a two year, full time degree program will usually comprise four semesters of study. Part time study is generally represented as double the duration of full time study. International students are required to study full time.

Semester Intake

Most degree programs have two intakes per year and can be started in either Semester 1 (late February) or Semester 2 (mid July). Those degree programs that have only one intake per year will list Semester 1 only or Semester 2 only.

Study Type

A graduate coursework program will comprise coursework (CW), research (R), and/or performance studies (P).

Admission Category

For the purposes of this guide, admission requirements have been divided into different categories. They are an indication only – applicants must either visit the Graduate Study@ANU website (www.anu.edu.au/graduate) or contact the relevant College for full details before applying.

Category 1: An Australian Bachelor degree with at least a credit (60 per cent) grade average (65 per cent in some instances), or its international equivalent.

Category 2: As per Category 1, but normally with a relevant major, or its international equivalent.

Category 3: An Australian Bachelor degree with at least a distinction grade average (70 per cent), or its international equivalent.

Category 4: As per Category 3, but normally with a relevant major, or its international equivalent.

Category 5: An Australian Bachelor degree with at least second-class, division A Honours, or its international equivalent.

Category 6: As per Category 5, but normally with a relevant major, or its international equivalent.

Category 7: A graduate qualification in a related discipline.

Category 8: As per Category 7, but normally with relevant work experience.

* Additional admission requirements (may include portfolio, audition or professional experience – contact the relevant College for full details or visit www.anu.edu.au/graduate).

Application Method

'Domestic' students are citizens of Australia or New Zealand or permanent residents of Australia. Students who do not fall into these categories are classified as 'international' students.

'UAC' applications are made through the University Admissions Centre. See page 6 for contact details.

'Direct' applications are made either as hard copy or online to ANU. See page 6 for contact details.

at RSBS due to its high quality of plant research and the excellent reputation of the academics undertaking the research projects.

Choosing to move to Australia and live in Canberra was an easy decision for Megan and she now reflects that she "loved studying in Canberra. RSBS was a great place to do a PhD. The quality of the academic, practical and emotional support provided to PhD students was excellent. The student social life was also great. I made many wonderful friends among the other PhD students - most of whom came from other countries like myself but have remained here in Canberra as we love the city and the lifestyle".

Studying at RSBS not only provided a great study environment, but was pivotal in providing academic opportunities to improve her scientific communication skills. Megan attended scientific conferences and was able to network with world leaders in plant research. In 2002 Megan received funding to spend on her own

professional development as a Special Award for Excellence in Science Communication, from the Cooperative Research Centre for Tropical Plant Protection.

Now at CSIRO, Megan is working on agricultural crops that are worth up to \$4 billion annually to Australia. As part of a research group, Megan works on the molecular basis of flowering time in wheat and barley with the aim of determining "how cereal plants sense seasonal cues, such as temperature and day length to synchronise flowering and grain production with optimal conditions during spring. To do this, we are identifying the genes that control these processes and determining how the genes function."

GRADUATE COURSEWORK DEGREE PROGRAMS

Degree Program	Duration (years)		Semester Intake	Study Type	Admission Category	Domestic Application Method	International Application Method
	Full time	Part time (domestic only)					
ACCOUNTING							
Graduate Certificate in Accounting	0.5	1	1 or 2	CW only	1	Direct	Direct
Master of Accounting	2	4	1 or 2	CW only	1	Direct	Direct
Master of Professional Accounting	1.5	3	1 or 2	CW only	1	Direct	Direct
ACTUARIAL STUDIES							
Graduate Certificate in Actuarial Techniques	0.5	1	1 only	CW only	2	Direct	Direct
Master of Actuarial Statistics	1	2	1 only	CW only	2	Direct	Direct
Master of Actuarial Studies	2	4	1 only	CW only	2	Direct	Direct
ANTHROPOLOGY							
Graduate Diploma in Arts (Anthropology)	1	2	1 or 2	CW only	1	UAC	Direct
Graduate Diploma in Arts (Biological Anthropology)	1	2	1 or 2	CW only	1	UAC	Direct
Graduate Diploma in Arts (Forensic Anthropology)	1	2	1 or 2	CW only	1	UAC	Direct
Graduate Diploma in Arts (Indigenous Australian Studies)	1	2	1 or 2	CW only	1	UAC	Direct
Master of Anthropology	1	2	1 or 2	CW only	5	UAC	Direct
Master of Applied Anthropology and Participatory Development	1	2	1 or 2	CW only	1	UAC	Direct
Master of Arts (Anthropology)	2	4	1 only	CW and R	1	UAC	Direct
Master of Arts (Biological Anthropology)	2	4	1 or 2	CW and R	2	UAC	Direct
Master of Arts (Forensic Anthropology)	2	4	1 or 2	CW and R	2	UAC	Direct
Master of Arts (Indigenous Australian Studies)	2	4	1 or 2	CW and R	1	UAC	Direct
Master of Culture, Health and Medical Sciences	1	2	1 or 2	CW and R	2	Direct	Direct
ARCHAEOLOGY							
Graduate Diploma in Arts (Archaeology)	1	2	1 or 2	CW only	1	UAC	Direct
Master of Archaeological Science	1	2	1 or 2	CW only	3	UAC	Direct
Master of Arts (Archaeology)	2	4	1 or 2	CW and R	1	UAC	Direct

Category 1: An Australian Bachelor degree with at least a credit (60 per cent) grade average **Category 2:** As per Category 1 with a relevant major **Category 3:** Distinction grade average **Category 4:** As per Category 3, but normally with a relevant major, **Category 5:** with at least second-class, division A Honours **Category 6:** As per Category 5, with a relevant major **Category 7:** A graduate qualification in a related discipline **Category 8:** As per Category 7, but with relevant work experience. All categories - or international equivalent. For full details, please see page 11.



PACIFIC SPECIFIC

Dr Katerina Teaiwa
Pacific Studies Convener
ANU College of Asia and the Pacific

Dr Katerina Teaiwa is coordinating Australia's first integrated Pacific Studies major for undergraduate students, on offer at ANU.

Teaiwa said the program of study will draw on existing graduate education and research strengths in Pacific Studies at ANU, which has one of the greatest repositories of expertise and information about the region in the world.

But she said the course will also have a transdisciplinary focus to allow students to access the rich cultural and artistic legacies of Pacific cultures via video, art, dance, and song, and to think

Degree Program	Duration (years)		Semester Intake	Study Type	Admission Category	Domestic Application Method	International Application Method
	Full time	Part time (domestic only)					
ART HISTORY & CURATORSHIP							
Graduate Diploma in Arts (Art History)	1	2	1 or 2	CW only	1	UAC	Direct
Graduate Diploma in Arts (Art History and Curatorship)	1	2	1 or 2	CW only	1	UAC	Direct
Master of Arts (Art History)	2	4	1 or 2	CW and R	1	UAC	Direct
Master of Arts (Art History and Curatorship)	2	4	1 or 2	CW and R	1	UAC	Direct
ASIA & THE PACIFIC							
Graduate Certificate in Applied Japanese Linguistics	0.5	1	1 or 2	CW only	2	UAC	Direct
Graduate Diploma in Asian Studies (Applied Japanese Linguistics)	1	2	1 or 2	CW only	2	UAC	Direct
Master of Arts (Asia Pacific Studies)	2	4	1 or 2	CW & R	6	UAC	Direct
Master of Arts (Southeast Asian Studies)	1	2	1 only	CW & R	6	UAC	Direct
Master of Asia-Pacific Studies	1	2	1 or 2	CW only	6	UAC	Direct
BIOTECHNOLOGY							
Graduate Certificate in Biotechnology	0.5	1	1 or 2	CW only	6	Direct	Direct
Graduate Certificate of Molecular Genetic Analysis	0.5	1	1 only	CW only	6	Direct	Direct
Graduate Diploma in Science (Biochemistry and Molecular Biology)	1	2	1 or 2	CW and R	2	Direct	Direct
Master of Biotechnology	1	2	2 only	CW only	6	Direct	Direct
Master of Molecular Genetic Analysis	1	2	2 or 2	CW only	6	Direct	Direct
BUSINESS & MANAGEMENT							
Graduate Certificate in Business Information Management	0.5	1	1 or 2	CW only	1	Direct	Direct
Graduate Certificate in Management	0.5	1	1 or 2	CW only	1*	Direct	Direct

Category 1: An Australian Bachelor degree with at least a credit (60 per cent) grade average **Category 2:** As per Category 1 with a relevant major **Category 3:** Distinction grade average **Category 4:** As per Category 3, but normally with a relevant major, **Category 5:** with at least second-class, division A Honours **Category 6:** As per Category 5, with a relevant major **Category 7:** A graduate qualification in a related discipline **Category 8:** As per Category 7, but with relevant work experience. All categories - or international equivalent. For full details, please see page 11.

creatively about regional challenges such as global climate change and rising sea levels that threaten many Pacific islands.

Learning about cultural practices from the Pacific is of particular interest to Teaiwa, especially if it has to do with dance. The anthropologist is also a keen choreographer and one of the founding members of the Oceania Dance Theatre at the University of the South Pacific.

It was her interest in dance that led Teaiwa to a project on family history that soon ballooned into a story that spanned nations. Although she was raised in Fiji, her father originally came from Banaba. This small, oyster-shaped island on the western periphery of Kiribati was home to a population of Micronesians up until early last century.

At that time the Banabans were forcibly relocated to the island of Rabi, part of distant Fiji, to accommodate phosphate mining. In order to retain their unique identity in this foreign place, the

people developed special dances and songs that reinforced and developed their culture.

These performance pieces grabbed Teaiwa's attention when, as a Masters student at the University of Hawaii, she began to explore aspects of Banaban history. She learned that a recurrent theme behind the dances was the sorrow that Banabans felt at being evicted from their home island.

Teaiwa's PhD project at ANU became a rich multimedia work, complete with text, pictures, sound and video. She connects this rich mix back to her own Pacific heritage, where forms of expression such as music and dance are so central, and able to integrate with such weighty topics as politics, history and geography.

GRADUATE COURSEWORK DEGREE PROGRAMS

Degree Program	Duration (years)		Semester Intake	Study Type	Admission Category	Domestic Application Method	International Application Method
	Full time	Part time (domestic only)					
Master of Business	1	2	1 or 2	CW only	1	Direct	Direct
Master of Business Administration	2	4	1 or 2	CW only	1*	Direct	Direct
Master of Commerce	2	4	1 or 2	CW & R	1	Direct	Direct
Master of Business Information Systems	2	4	1 or 2	CW only	1	Direct	Direct
Master of Information Systems Studies	1	2	1 or 2	CW only	1	Direct	Direct
Master of Management	1	2	1 or 2	CW only	1*	Direct	Direct
CHEMISTRY							
Graduate Certificate in Chemistry	0.5	1	1 or 2	CW & R	6	Direct	Direct
Graduate Diploma in Science (Chemistry)	1	2	1 or 2	CW & R	1	Direct	Direct
Master of Chemistry	1	2	1 or 2	CW & R	6	Direct	Direct
CLASSICS							
Graduate Diploma in Arts (Classics)	1	2	1 or 2	CW only	1	UAC	Direct
Master of Arts (Classics)	2	4	1 or 2	CW & R	1	UAC	Direct
COMPUTER SCIENCE & TECHNOLOGY							
Master of Computing	1	2	1 or 2	CW only	4	Direct	Direct
Master of Computing (Honours)	1	2	1 or 2	CW & R	7	Direct	Direct
Master of Information Technology Studies	1	2	1 or 2	CW only	2	Direct	Direct
DEMOGRAPHY & SOCIAL RESEARCH							
Graduate Certificate in Social Research	0.5	1	1 or 2	CW only	1	Direct	Direct
Master of Social Research	1	2	1 or 2	CW only	1	Direct	Direct
DIPLOMACY							
Master of Diplomacy/Master of Arts (International Relations)	2	3.5	2 only	CW & R	7*	Direct	Direct
Master of Diplomacy/Master of Arts (Strategic Studies)	2	3.5	2 only	CW & R	7*	Direct	Direct
Master of Diplomacy/Master of Asia-Pacific Studies	1.5	2.5	1 only	CW only	7*	Direct	Direct
Master of Diplomacy/Master of International Affairs	1.5	2.5	1 only	CW only	7*	Direct	Direct
Master of Diplomacy/Master of International and Development Economics	1.5	2.5	1 only	CW only	7*	Direct	Direct
Master of Diplomacy/Master of Laws (International Law)	1.5	2.5	1 only	CW only	7*	Direct	Direct
Master of Diplomacy/Master of Middle Eastern and Central Asian Studies	1.5	2.5	1 only	CW only	7*	Direct	Direct
Master of Diplomacy/Master of Public Administration	1.5	2.5	1 only	CW only	7*	Direct	Direct
Master of Diplomacy/Master of Public Policy (Development Policy) or (International Policy)	1.5	2.5	1 only	CW only	7*	Direct	Direct
Master of Diplomacy/Master of Strategic Affairs	1.5	2.5	1 only	CW only	7*	Direct	Direct
Master of Diplomacy/Master of International Law	1.5	2.5	1 only	CW only	7*	Direct	Direct
Master of Diplomacy/Master of Environmental Management and Development	1.5	2.5	1 only	CW only	7*	Direct	Direct
Master of Diplomatic Studies	1	2.5	Summer	CW only	7*	Direct	Direct
Doctor of Diplomatic Studies	2	4	Summer	CW & R	8	Direct	Direct

Category 1: An Australian Bachelor degree with at least a credit (60 per cent) grade average **Category 2:** As per Category 1 with a relevant major **Category 3:** Distinction grade average **Category 4:** As per Category 3, but normally with a relevant major, **Category 5:** with at least second-class, division A Honours **Category 6:** As per Category 5, with a relevant major **Category 7:** A graduate qualification in a related discipline **Category 8:** As per Category 7, but with relevant work experience. All categories - or international equivalent. For full details, please see page 11.

Degree Program	Duration (years)		Semester Intake	Study Type	Admission Category	Domestic Application Method	International Application Method
	Full time	Part time (domestic only)					
EARTH SCIENCES							
Graduate Diploma in Science (Geology)	1	2	1 or 2	CW & R	1	Direct	Direct
Graduate Diploma in Science (Regolith Studies)	1	2	1 or 2	CW & R	1	Direct	Direct
Master of Science (Earth Physics)	1	2	1 or 2	CW & R	5	Direct	Direct
ECOLOGY, EVOLUTION & SYSTEMATICS							
Graduate Diploma in Science (Ecology, Evolution and Systems)	1	2	1 or 2	CW & R	1	Direct	Direct
ECONOMICS							
Graduate Certificate in Economic Policy	0.5	1	1 or 2	CW only	1	Direct	Direct
Graduate Certificate in International and Development Economics	0.5	1	1 or 2	CW only	1	Direct	Direct
Graduate Diploma in Applied Economics	1	2	1 only	CW only	2	Direct	Direct
Graduate Diploma in Economic History	1	2	1 or 2	CW & R	2	Direct	Direct
Graduate Diploma in Economic Policy	1	2	1 or 2	CW only	2	Direct	Direct
Graduate Diploma in Economics	1	2	1 only	CW only	2	Direct	Direct
Graduate Diploma in Environmental and Resource Economics	1	2	1 or 2	CW only	1	Direct	Direct
Graduate Diploma in International and Development Economics	1	2	1 or 2	CW only	2	Direct	Direct
Graduate Diploma in International Trade and Economic Relations	1	2	1 or 2	CW only	2	Direct	Direct
Master of Applied Economics	1	2	1 or 2	CW only	6	Direct	Direct
Master of Economics	1	2	1 only	CW only	6	Direct	Direct
Master of Economic Policy	1	2	1 only	CW only	6	Direct	Direct
Master of Environmental and Resource Economics	1	2	1 or 2	CW only	6	Direct	Direct
Master of Health Economics	1	2	1 or 2	CW only	6	Direct	Direct
Master of International and Development Economics	1	2	1 or 2	CW only	5	Direct	Direct
Master of International Trade and Economic Relations	1	2	1 or 2	CW only	6	Direct	Direct
EDUCATION							
Graduate Certificate in Higher Education	–	1.5	2 only	CW only	1	UAC	Direct
Master of Higher Education	–	3	1 or 2	CW only	1	UAC	Direct
ENGINEERING							
Master of Engineering	1	2	1 or 2	CW only	4	Direct	Direct
Master of Engineering (Honours)	2	4	1 or 2	CW & R	6	Direct	Direct
ENGLISH							
Graduate Diploma in Arts (English)	1	2	1 or 2	CW only	1	UAC	Direct
Master of Arts (English)	2	4	1 or 2	CW & R	1	UAC	Direct
ENVIRONMENT & RESOURCE MANAGEMENT							
Graduate Certificate in Environment	0.5	1	1 or 2	CW only	2	Direct	Direct
Graduate Certificate in Environmental Science	0.5	1	1 or 2	CW only	7	Direct	Direct

Category 1: An Australian Bachelor degree with at least a credit (60 per cent) grade average **Category 2:** As per Category 1 with a relevant major **Category 3:** Distinction grade average **Category 4:** As per Category 3, but normally with a relevant major, **Category 5:** with at least second-class, division A Honours **Category 6:** As per Category 5, with a relevant major **Category 7:** A graduate qualification in a related discipline **Category 8:** As per Category 7, but with relevant work experience. All categories – or international equivalent. For full details, please see page 11.

GRADUATE COURSEWORK DEGREE PROGRAMS

Degree Program	Duration (years)		Semester Intake	Study Type	Admission Category	Domestic Application Method	International Application Method
	Full time	Part time (domestic only)					
Graduate Certificate in Environmental Management and Development	0.5	1	1 or 2	CW only	2	Direct	Direct
Graduate Certificate in Forestry	0.5	1	1 or 2	CW only	2	Direct	Direct
Graduate Diploma in Environment	1	2	1 or 2	CW only	1	Direct	Direct
Graduate Diploma in Environmental Management & Development	1	2	1 or 2	CW only	2	Direct	Direct
Graduate Diploma in Forestry	1	2	1 or 2	CW only	1	Direct	Direct
Graduate Diploma in Science (Environmental Science)	1	2	1 or 2	CW only	7	Direct	Direct
Graduate Diploma in Science (Forestry)	1	2	1 or 2	CW & R	1	Direct	Direct
Master of Climate Change	1	2	1 or 2	CW only	5*	Direct	Direct
Master of Environment	1	2	1 or 2	CW & R	1	Direct	Direct
Master of Environmental Management and Development	1	2	1 or 2	CW & R	5*	Direct	Direct
Master of Forestry	1	2	1 or 2	CW & R	5	Direct	Direct
Master of Natural Hazards	1	2	1 or 2	CW only	1	Direct	Direct
Master of Science (Environmental Science)	1	2	1 or 2	CW & R	5	Direct	Direct
EPIDEMIOLOGY							
Master of Applied Epidemiology	2	4	1 or 2	CW & R	8	Direct	Direct
ETHICS							
Master of Arts (Professional and Applied Ethics)	2	4	1 or 2	CW & R	6	UAC	Direct
FINANCE							
Graduate Certificate in Financial Management	0.5	1	1 or 2	CW only	1	Direct	Direct
Master of Finance	2	4	1 only	CW & R	2	Direct	Direct
Master of Financial Management	1	2	1 only	CW only	2	Direct	Direct
GEOGRAPHICAL SCIENCES							
Graduate Certificate in Geographical Sciences	0.5	1	1 or 2	CW only	2	Direct	Direct
Graduate Diploma in Geographical Sciences	1	2	1 or 2	CW only	1	Direct	Direct
Graduate Diploma in Science (Geography)	1	2	1 or 2	CW & R	1	Direct	Direct
Master of Geographical Sciences	1	2	1 or 2	CW only	1	Direct	Direct
HEALTH							
Master of Public Health	1	2	1 or 2	CW only	TBA	Direct	Direct
HISTORY							
Graduate Diploma in Arts (History)	1	2	1 or 2	CW only	2	UAC	Direct
Master of Arts (History)	2	4	1 or 2	CW & R	2	UAC	Direct
INTERNATIONAL RELATIONS							
Graduate Diploma in International Affairs	1	2	1 or 2	CW only	3	Direct	Direct
Master of Arts (International Relations)	1.5	3	1 or 2	CW & R	6	Direct	Direct
Master of International Affairs	1	2	1 or 2	CW only	6	Direct	Direct

Category 1: An Australian Bachelor degree with at least a credit (60 per cent) grade average **Category 2:** As per Category 1 with a relevant major **Category 3:** Distinction grade average **Category 4:** As per Category 3, but normally with a relevant major, **Category 5:** with at least second-class, division A Honours **Category 6:** As per Category 5, with a relevant major **Category 7:** A graduate qualification in a related discipline **Category 8:** As per Category 7, but with relevant work experience. All categories - or international equivalent. For full details, please see page 11.

Degree Program	Duration (years)		Semester Intake	Study Type	Admission Category	Domestic Application Method	International Application Method
	Full time	Part time (domestic only)					
LAW							
Graduate Certificate in Australian Migration Law	0.5	1	1 or 2	CW only	1	UAC	Direct
Graduate Certificate in Environmental Law	0.5	1	1 or 2	CW only	1	UAC	Direct
Graduate Diploma in Environmental Law	1	2	1 or 2	CW only	1	UAC	Direct
Graduate Diploma in Government and Commercial Law	1	2	1 only	CW only	1	UAC	Direct
Graduate Diploma in International Law	1	2	1 or 2	CW only	1	UAC	Direct
Graduate Diploma in Law	1	2	1 or 2	CW only	7	UAC	Direct
Graduate Diploma in Law (Environmental Law)	1	2	1 or 2	CW only	7	UAC	Direct
Graduate Diploma in Law (Government and Commercial Law)	1	2	1 or 2	CW only	7	UAC	Direct
Graduate Diploma in Law (International Law)	1	2	1 or 2	CW only	7	UAC	Direct
Graduate Diploma in Legal Practice	1	2	1 or 2	CW only	7	UAC	Direct
Graduate Diploma in Legal Studies	1	2	1 only	CW only	1	UAC	Direct
Master of Environmental Law	1	2	1 or 2	CW only	1	UAC	Direct
Master of Government and Commercial Law	1	2	1 only	CW only	1	UAC	Direct
Master of International Law	1	2	1 or 2	CW only	1	UAC	Direct
Master of Laws	1	2	1 or 2	CW only	7	UAC	Direct
Master of Laws (Environmental Law)	1	2	1 or 2	CW only	7	UAC	Direct
Master of Laws (Government and Commercial Law)	1	2	1 or 2	CW only	7	UAC	Direct
Master of Laws (International Law)	1	2	1 or 2	CW only	7	UAC	Direct
Master of Laws (Legal Practice)	0.5	2	1 or 2	CW only	7	Internal transfer only	
Master of Legal Studies	1	2	1 only	CW only	1	UAC	Direct
Doctor of Juridical Science	2.5	4	1 or 2	CW & R	6	Direct	Direct
Juris Doctor	3	6	1 or 2	CW only	1	UAC	Direct
LIBERAL ARTS							
Graduate Certificate in Liberal Arts (Cultural Heritage Management)	0.5	1	1 or 2	CW only	1	UAC	Direct
Graduate Certificate in Liberal Arts (Museums and Collections)	0.5	1	1 or 2	CW only	1	UAC	Direct
Graduate Certificate in Liberal Arts (Writing World Histories and People)	0.5	1	1 or 2	CW only	1	UAC	Direct
Graduate Certificate in Liberal Arts (Visual Research)	0.5	1	1 or 2	CW only	1	UAC	Direct
Graduate Diploma in Liberal Arts (Cultural Heritage Management)	1	2	1 or 2	CW only	3	UAC	Direct
Graduate Diploma in Liberal Arts (Museums and Collections)	1	2	1 or 2	CW only	3	UAC	Direct
Graduate Diploma in Liberal Arts (Writing World Histories and People)	1	2	1 or 2	CW only	3	UAC	Direct
Graduate Diploma in Liberal Arts (Visual Research)	1	2	1 or 2	CW only	3	UAC	Direct
Master of Liberal Arts (Cultural Heritage Management)	1.5	3	1 or 2	CW only	5	UAC	Direct
Master of Liberal Arts (Museums and Collections)	1.5	3	1 or 2	CW only	5	UAC	Direct
Master of Liberal Arts (Writing World Histories and People)	1.5	3	1 or 2	CW only	5	UAC	Direct

Category 1: An Australian Bachelor degree with at least a credit (60 per cent) grade average **Category 2:** As per Category 1 with a relevant major **Category 3:** Distinction grade average **Category 4:** As per Category 3, but normally with a relevant major, **Category 5:** with at least second-class, division A Honours **Category 6:** As per Category 5, with a relevant major **Category 7:** A graduate qualification in a related discipline **Category 8:** As per Category 7, but with relevant work experience. All categories - or international equivalent. For full details, please see page 11.

GRADUATE COURSEWORK DEGREE PROGRAMS

Degree Program	Duration (years)		Semester Intake	Study Type	Admission Category	Domestic Application Method	International Application Method
	Full time	Part time (domestic only)					
Master of Liberal Arts (Visual Research)	1.5	3	1 or 2	CW only	5	UAC	Direct
Master of Liberal Arts (Cultural Heritage Management) (Honours)	2	4	1 or 2	CW & R	8	UAC	Direct
Master of Liberal Arts (Museums and Collections) (Honours)	2	4	1 or 2	CW & R	8	UAC	Direct
Master of Liberal Arts (Writing World Histories and People) (Honours)	2	4	1 or 2	CW & R	8	UAC	Direct
Master of Liberal Arts (Visual Research) (Honours)	2	4	1 or 2	CW & R	8	UAC	Direct
LINGUISTICS							
Graduate Diploma in Arts (Linguistics)	1	2	1 or 2	CW only	1	UAC	Direct
Graduate Diploma in Applied Linguistics	1	2	1 or 2	CW only	1	UAC	Direct
Master of Applied Linguistics	2	4	1 or 2	CW & R	1	UAC	Direct
Master of Linguistics	1	2	1 or 2	CW & R	6	UAC	Direct
MARKETING							
Graduate Certificate in Marketing	0.5	1	1 or 2	CW only	1	Direct	Direct
Master of Marketing	2	4	1 or 2	CW only	1	Direct	Direct
MATHEMATICAL SCIENCES							
Graduate Diploma in Science (Mathematics)	1	2	1 or 2	CW & R	1	Direct	Direct
Graduate Diploma in Science (Scientific Computation)	1	2	1 or 2	CW & R	1	Direct	Direct
Master of Mathematical Sciences	2	4	1 or 2	CW only	6	Direct	Direct
MIDDLE EASTERN & CENTRAL ASIAN STUDIES							
Graduate Diploma in Middle Eastern and Central Asian Studies	1	2	1 or 2	CW only	1	UAC	Direct
Master of Arts (Middle Eastern and Central Asian Studies)	2	4	1 or 2	CW & R	1	UAC	Direct
Master of Islam in the Modern World	1	2	1 or 2	CW only	1	UAC	Direct
Master of Middle Eastern and Central Asia Studies	1	2	1 or 2	CW only	5	UAC	Direct
MUSIC							
Graduate Certificate in Music Performance	-	1	1 or 2	P only	2*	Direct	Direct
Graduate Diploma in Music	1	2	1 or 2	CW, P & R	2*	Direct	Direct
Master of Music	1	2	1 or 2	CW, P & R	6*	Direct	Direct
NEUROSCIENCE							
Graduate Certificate in Neuroscience	0.5	1	2 only	CW only	2	Direct	Direct
Graduate Diploma in Science (Neuroscience)	1	2	1 or 2	CW & R	1	Direct	Direct
Master of Neuroscience	1	2	2 only	CW only	2	Direct	Direct
NEW MEDIA ARTS							
Master of New Media Arts	1	2	1 only	CW only	4*	Direct	Direct
Master of Visual Effects	1	2	1 only	CW only	4*	Direct	Direct
PHOTONICS							
Master of Photonics	1	2	1 or 2	CW only	2	Direct	Direct
PHYSICS							
Graduate Diploma in Science (Physics)	1	2	1 or 2	CW & R	1	Direct	Direct
Graduate Diploma in Science (Theoretical Physics)	1	2	1 or 2	CW & R	1	Direct	Direct
Master of Nuclear Science	1	2	1 or 2	CW only	1	Direct	Direct

Category 1: An Australian Bachelor degree with at least a credit (60 per cent) grade average **Category 2:** As per Category 1 with a relevant major **Category 3:** Distinction grade average **Category 4:** As per Category 3, but normally with a relevant major, **Category 5:** with at least second-class, division A Honours **Category 6:** As per Category 5, with a relevant major **Category 7:** A graduate qualification in a related discipline **Category 8:** As per Category 7, but with relevant work experience. All categories - or international equivalent. For full details, please see page 11.

Degree Program	Duration (years)		Semester Intake	Study Type	Admission Category	Domestic Application Method	International Application Method
	Full time	Part time (domestic only)					
PLANT SCIENCES							
Graduate Diploma in Science (Plant Sciences)	1	2	1 or 2	CW & R	1	Direct	Direct
POLICY & GOVERNANCE							
Graduate Certificate in Public Administration	0.5	1	1 or 2	CW only	1	Direct	Direct
Graduate Certificate in Public Policy	0.5	1	1 or 2	CW only	5	Direct	Direct
Graduate Diploma in Public Administration	1	2	1 or 2	CW only	1	Direct	Direct
Executive Master of Public Administration	-	2	1 or 2	CW only	1*	Direct	Direct
Master of Public Administration	1	2	1 or 2	CW only	5	Direct	Direct
Master of Public Policy (Development Policy)	1	2	1 or 2	CW only	5*	Direct	Direct
Master of Public Policy (Economic Policy)	1	2	1 or 2	CW only	5*	Direct	Direct
Master of Public Policy (Environmental Law)	1	2	1 or 2	CW only	5*	Direct	Direct
Master of Public Policy (Environmental Policy)	1	2	1 or 2	CW only	5*	Direct	Direct
Master of Public Policy (Industry Strategy)	1	2	1 or 2	CW only	5*	Direct	Direct
Master of Public Policy (International Policy)	1	2	1 or 2	CW only	5*	Direct	Direct
Master of Public Policy (Policy Analysis)	1	2	1 or 2	CW only	5*	Direct	Direct
Master of Public Policy (Social Policy)	1	2	1 or 2	CW only	5*	Direct	Direct
PSYCHOLOGY							
Graduate Diploma in Psychological Studies	1	2	1 or 2	CW only	1	Direct	Direct
Master of Clinical Psychology	2	4	1 only	CW only	6	Direct	Direct
Doctor of Psychology (Clinical)	3	6	1 or 2	CW & R	6	Direct	Direct
SCIENCE							
Graduate Certificate in Contemporary Science	0.5	1	1 or 2	CW only	2	Direct	Direct
Master of Contemporary Science	1	2	1 or 2	CW only	2	Direct	Direct
SCIENCE COMMUNICATION							
Graduate Certificate in Science Communication	-	1	1 or 2	CW only	2*	Direct	Direct
Graduate Diploma in Scientific Communication	1	-	1 only	CW only	2*	Direct	Direct
Master of Science Communication	1	2	1 or 2	CW & R	2*	Direct	Direct
STATISTICS							
Graduate Certificate in Applied Statistics	0.5	1	1 only	CW only	1	Direct	Direct
Graduate Certificate in Business Statistics	0.5	1	1 only	CW only	1	Direct	Direct
Master of Applied Statistics	1	2	1 or 2	CW only	2	Direct	Direct
STRATEGIC STUDIES							
Graduate Diploma in Strategic Affairs	1	2	1 or 2	CW only	3	UAC	Direct
Master of Arts (Strategic Studies)	1.5	3	1 or 2	CW & R	5	UAC	Direct
Master of Strategic Affairs	1	2	1 or 2	CW only	5	UAC	Direct
TRANSLATION STUDIES							
Graduate Diploma in Translation Studies	1	2	1 or 2	CW only	2	UAC	Direct
Master of Translation Studies	2	4	1 or 2	CW & R	2	UAC	Direct
VISUAL ARTS							
Graduate Diploma of Arts (Visual)	1	2	1 or 2	CW & P	2*	Direct	Direct
Master of Design Arts	1	2	1 or 2	CW & P	2*	Direct	Direct
Master of Arts (Visual Arts)	2	4	1 or 2	CW, P & R	2*	Direct	Direct
Master of Visual Arts	1	2	1 or 2	P only	2*	Direct	Direct

Category 1: An Australian Bachelor degree with at least a credit (60 per cent) grade average **Category 2:** As per Category 1 with a relevant major **Category 3:** Distinction grade average **Category 4:** As per Category 3, but normally with a relevant major, **Category 5:** with at least second-class, division A Honours **Category 6:** As per Category 5, with a relevant major **Category 7:** A graduate qualification in a related discipline **Category 8:** As per Category 7, but with relevant work experience. All categories - or international equivalent. For full details, please see page 11.

GRADUATE RESEARCH DEGREE PROGRAMS

If you wish to undertake a research degree (Master of Philosophy - MPhil, or Doctor of Philosophy - PhD) you will need to contact the Graduate Studies Convener from the Graduate Studies Field closest to your area of interest. The graduate studies convener is responsible for helping you to identify a potential supervisor at ANU, or letting you know if ANU has anyone working in your area of research interest. Candidates are normally enrolled and located in the School, Faculty or Centre of the College in which the Chair of their supervisory panel is situated. See below for the list of Graduate Studies Fields at ANU. Details on how to apply for admission to a research degree at ANU can be found on page 6 or on the Graduate Study@ANU website - www.anu.edu.au/graduate

Anthropology

Convener: Dr Andrew McWilliam
E: anthropology.gradprog@anu.edu.au

Theoretical and applied studies in Aboriginal Australia, Melanesia, Micronesia, Polynesia and Asia.

Astronomy & Astrophysics

Conveners: Professor Mike Bessell and Professor Peter Wood
E: astronomy.gradprog@anu.edu.au

Observational and theoretical frontiers of astronomy, mapping the universe, galaxy dynamics, stellar systems, stars and extra solar planets.

Archaeology & Palaeoanthropology

Convener: Dr Geoff Clark
E: archpal.gradprog@anu.edu.au

Human evolution, primatology, Pleistocene, landscape and environmental archaeology, archaeology and linguistics, stoneworking technology, gender, cultural resource management, archaeological science.

Art History & Curatorship

Convener: Professor Sasha Grishin
E: arthistory.gradprog@anu.edu.au

Australian, Asian, European and American art history.

Asia & the Pacific

Convener: Dr Greg Fealy
E: gradconvener.asiapac@anu.edu.au

East Asia, Middle East and Central Asia, Pacific studies, Southeast and South Asia, strategic and defence studies, sustainable heritage development studies.

Biochemistry & Molecular Biology

Convener: Professor Stefan Broer
E: bmb.gradprog@anu.edu.au

Macro-molecular structure and function, cell structure and function, membrane biology, proteomics, functional genomics, molecular and cellular immunology, microbial genetics, parasitology.

Business

Convener: Dr Greg Shailer
E: gradconvener.business@anu.edu.au

Accounting, business administration, business information systems, commerce, finance, international business, management and marketing.

Chemistry

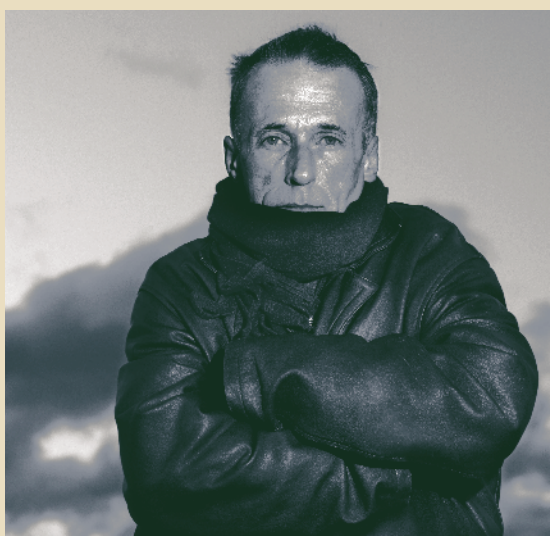
Convener: Professor Chris Easton
E: chemistry.gradprog@anu.edu.au

Biological chemistry, organic synthesis, electrochemistry, laser and optical spectroscopy, photophysics, dynamics and chemical physics, theoretical biomolecular dynamics, liquid properties, physical and theoretical chemistry of polymers, biophysics, surface colloid chemistry.

Computer Science

Convener: Dr Peter Christen
E: compsci.gradprog@anu.edu.au

Algorithms and data, computer systems and architectures, diagnosis, planning and optimisation, software engineering, human-centred computing, logic and computation, statistical machine learning.



WHEN & WEAR: THE PREHISTORY OF CLOTHING

Ian Gilligan

PhD researcher

ANU College of Arts and Social Sciences

Doctoral researcher Ian Gilligan from the ANU College of Arts and Social Sciences is fascinated by how humans came to develop clothing, and how that innovation might have in turn given our species an evolutionary edge over other hominids.

Our earliest ancestors were not born clothed, and nor are we. At some point we had to develop different kinds of clothing and the technology to produce it. So when did this happen, and why?

Creative Arts

Convener: Dr Nigel Lendon
E: creative.arts@anu.edu.au

Visual arts, ceramics, glass, furniture, gold and silversmithing, painting, photography and media arts, printmedia and drawing, sculpture, textiles, design arts, digital media, video, animation, visual effects, digital compositing, sound art, networked media, physical computing, interactivity, coding, European, British, American and Australian drama and theatre, music, performance, composition, musicology, music pedagogy, classical, jazz, folk, traditional and popular musics.

Demography

Convener: Dr Ann Evans
E: demography.gradprog@anu.edu.au

Demography and population studies.

Earth Sciences

Conveners: Professor Brad Pillans and Dr Ross Kerr
E: earthsci.gradprog@anu.edu.au

Geochemistry, geochronology, environmental geochemistry, ore systems, mineralogy, seismology, mathematical geophysics, geodynamics, geomagnetism, mineral physics, structural geology, tectonics, marine geoscience, biogeochemistry, micropalaeontology, vertebrate palaeontology, global change, regolith and landscape evolution.

Ecology, Evolution & Systematics

Convener: Dr Scott Keogh
E: ecology.gradprog@anu.edu.au

Animal, plant and microbial ecology and evolution, behavioural, physiological and theoretical ecology, conservation biology, molecular evolution, population genetics, animal and plant systematics, information technology, environmental management, geography and prehistory.

Economics

Convener: Professor Farshid Vahid
E: economics.gradprog@anu.edu.au

Economic theory, applied economics, econometrics, international economics, economics of the Asia-Pacific region, economic history and economics of development.

Education

Convener: Dr Margaret Kiley
E: education.gradprog@anu.edu.au

Higher education, including doctoral education, research supervision, policy, practice, aspects of assessment, evaluation and postdoctoral training, and academic and professional practice including academic work, teaching, learning and curriculum in higher education, continuing professional learning, and the teaching-research nexus.

Epidemiology, Population Health & Health Services

Convener: Dr Gordon Carmichael
E: epidemiology.gradprog@anu.edu.au

Communicable diseases, environmental health, social determinants of health, population health and development, health services, health economics, mental health, primary health care research.

Engineering

Convener: Dr Matthew Doolan
E: engineering.gradprog@anu.edu.au

Advanced manufacturing and production systems, computer vision, materials, robotics, photovoltaic solar energy, solar thermal energy, systems and control, signal processing and telecommunications.

Environment & Resource Management

Convener: Associate Professor Robert Heinsohn
E: envt.gradprog@anu.edu.au

Conservation biology, corporate sustainability, ecological humanities, environmental and social impact assessment, fire science, forestry, greenhouse science, land and water management, landscape ecology, resource policy, sustainable development, urban systems.

"Anthropology shows us that some groups of modern humans were happy to wear nothing unless they were cold, which suggests we didn't invent clothes in the first place for decorative or social purposes," Gilligan says.

"The other important thing that prehistory tells us is that for all of the time humans have been around, the world has been going through a series of ice ages."

Gilligan argues that humans opted for changing their behaviour over changing their biology to deal with the chill. And one of the most crucial behavioural adaptations was the development of fitted clothing: layered garments that were fitted to protect the limbs and the torso.

This kind of apparel is likely to have been crucial in enabling our species to survive the last ice age. And it might have been what gave us the evolutionary edge over Neanderthals.

"Neanderthals didn't need to develop complex clothing," Gilligan says, although he does suspect they would have worn simple, draped furs. "They were more thermally adapted to the cold biologically. Living in the middle latitudes, they were less exposed to heat stress during summer. They were able to survive in cooler environments. Until that very last cold period 30,000 years ago, they didn't bother with specialised cutting and sewing technologies."

One consequence of this late movement towards complex clothing, he argues, was the otherwise mysterious disappearance of the Neanderthals just before the peak of the last ice age.

Homo sapiens, meanwhile, appear to have flourished in large part thanks to the invention of clothing.

GRADUATE RESEARCH DEGREE PROGRAMS

Geographical Sciences

Convener: Dr Bryant Allen
E: geography.gradprog@anu.edu.au

Geographical dimensions of and interactions between cultural, social, environmental, economic and political change in Australia and in the Southeast and East Asian, Melanesian and Pacific regions.

Gender, Sexuality & Culture

Convener: Dr Geng Song
E: gradconvener.gender@anu.edu.au

Feminist theory, anthropology, history, literary, critical and cultural studies, gender and development, international studies.

History

Convener: Dr Douglas Craig
E: history.gradprog@anu.edu.au

Australian, Pacific, Southeast Asian, Chinese, Japanese, Korean, and other East Asian history. Modern Europe and Russia, medieval and Tudor Britain, ancient Greek warfare and historiography, politics and society in ancient Rome.

Humanities

Convener: Dr Helen Keane
E: literature.gradprog@anu.edu.au

Literature of the ancient Greek and Roman world, the classical tradition, renaissance, romantic, modernist and contemporary literature, postcolonial studies, Australian and American studies, European cinema, film theory and history, gender and cultural studies, feminist and critical theory, medical humanities.

Interdisciplinary & Cross-Cultural Studies

Convener: Professor Paul Pickering
E: intercultural.gradprog@anu.edu.au

Disciplinary and interdisciplinary ramifications of the term 'cross-cultural' and notions in the fields of anthropology, history, literary studies, music, and linguistics, patterns of transaction and translation between cultures, contemporary conceptualisations of

'cultural difference' in the fields of postcolonial, migration and globalisation studies, Indigenous Australia, Britain and Europe, South Asia, North America, Asia-Pacific, museums and collections, public memory and heritage, visual culture.

Indigenous Australia

Convener: Professor Mick Dodson
E: gradconvener.indigenous@anu.edu.au

Sustainable community development, environment, Indigenous and Australian identities, history.

Law

Convener: Dr Matthew Rimmer
E: law.gradprog@anu.edu.au

International law, environmental law, government and commercial law, intellectual property and copyright law, criminal law and public law.

Linguistics & Languages

Convener: Dr Johanna Rendle-Short
E: linguistics.gradprog@anu.edu.au

Syntax, semantics, morphology, phonetics and phonology, comparative and historical linguistics, language typology, cross-cultural communication, language and culture, discourse analysis, sociolinguistics, language planning and language politics, first language learning, second language acquisition, teaching of second and foreign languages, research methods in applied linguistics, Indo-European, Austronesian, Papuan, Indigenous Australian and Chinese linguistics.

Mathematical Sciences

Convener: Dr Ben Andrews
E: mathsci.gradprog@anu.edu.au

Computational mathematics, algebra and topology, analysis and geometry, applied and nonlinear analysis, mathematical physics, statistical science, bioinformation science, financial mathematics.



WHEN LAW MEETS SCIENCE

Judith Jones
Lecturer and researcher
ANU College of Law

What kind of science is being used by our political leaders and law makers when they assess things like environmental impact? How could the seemingly disparate worlds of science and the law be better integrated?

These are the questions being pursued by Judith Jones, a senior lecturer in law from the ANU College of Law.

"When our legal and policy decision-makers use science to assist with making a choice, they are informed by what might be called the 'best available science' or 'regulatory science'," she says.

Medical Sciences (including Neuroscience)

Convener: Dr Anna Cowan
E: medical.gradprog@anu.edu.au

Gene structure and regulation, protein structure and function, epigenomics, cell biology, neuroscience, physiology, immunology and infection, basic applied and clinical medical research.

Philosophy

Convener: Professor Alan Hajek
E: philosophy.gradprog@anu.edu.au

Philosophy of biology, philosophy of mind, metaphysics, philosophy of probability, history of philosophy.

Physics

Convener: Professor Neil Manson
E: physics.gradprog@anu.edu.au

Nuclear structure and dynamics, modification and characterisation of materials, ion implantation, nano-materials, molecular structure, positron studies, physics and chemistry of surfaces, nonlinear physics, solitons, photonic devices, quantum optics, Bose-Einstein condensates, quantum information processing, plasma physics, fuel cells, statistical mechanics and complex systems.

Plant Sciences

Convener: Dr Spencer Whitney
E: plantsci.gradprog@anu.edu.au

Functional genomics of plant growth and development, plant-microbe interactions, plant environmental biology and stress physiology, plant nutrition.

Political Science & International Relations

Convener: Dr Brendan Taylor
E: polsci.gradprog@anu.edu.au

International relations and strategic studies, Asia and the Pacific, democratic institutions, social and political theory.

Psychology

Convener: Dr Mike Smithson
E: psychology.gradprog@anu.edu.au

Intergroup relations and group processes, social cognition, attitudes and values, personality, interpersonal relationships, personality disorders, language and psychopathology, anxiety disorders, health psychology, clinical psychology, mental health, visual cognition, cognition and perception, psychophysics, space perception, mechanisms of movement control.

Public Policy

Convener: Dr Peter Larmour
E: pubpol.gradprog@anu.edu.au

Policy analysis through economics, political science, philosophy, law and management, policy analysis training.

Sociology

Convener: Dr Alden Klovdahl
E: sociology.gradprog@anu.edu.au

Social processes and structures in Australia and other industrialised countries, processes of development in non-Western societies.

Statistics

Convener: Dr Steven Stern
E: statistics.gradprog@anu.edu.au

Finance, applied statistics, actuarial studies.

Science Communication

Convener: Dr Will Grant
E: scicomm.gradprog@anu.edu.au

Informal learning environments, health science communication, sustainability and climate change, perceptions of expertise, mental modelling, decision making, bibliometrics, cross-cultural science communication, science and the arts, evaluation.

"But this is often not science as the scientific community would recognise it. The time frames for making decisions are legally constrained, so the information gathering process is not equivalent to the idealised process of scientific inquiry, which, in theory, is never finished. Once a legally binding decision is made, it is rarely open to revision or reinterpretation in light of new evidence, as scientific inquiry dictates.

"While there may be some avenues of appeal against some types of judicial decisions should new evidence come to light, the decisions of public administrators relating to environmental assessments are much harder to reverse. Once a development is approved and constructed, a license issued, a forest logged and biodiversity diminished, it is usually impossible to put things back the way they were."

Jones argues that public administrators can only make decisions consistent with laws passed by parliament, and at present there is an enormous gulf between what this science is saying about the need

for environmental protection and what the law requires public administrators to decide. If law and science are going to meet in the context of public administration, then one of them has to change, she says. "Somehow I don't think it is going to be the science."

GRADUATE STUDIES SELECT

What is it?

Graduate Studies Select (GSS) is a new program of study at ANU, recognising that graduate students often have a range of professional and personal needs that may not necessarily be met by following a program of study in a single academic discipline. Subject to meeting course entry requirements, GSS students may select courses from across the graduate course offerings available, thus increasing the flexibility and choices available.

The Program enables students to structure their studies and direct their learning in ways which best meet their academic, personal and professional interests, enabling them to develop skills and expertise across a range of learning areas.

For example, students could construct a program of study comprising courses in art history, environmental science, finance and management, or – like one of our first GSS graduates – study courses in genetics, environmental chemistry, population studies and medical anthropology.

A suite of new academic awards has been created through Graduate Studies Select. Students will be enrolled in the Graduate Studies Program, and may elect to take out the Certificate of Graduate Studies, the Diploma of Graduate Studies or the Master of Studies. There is also scope for higher pathways for student achievement with the anticipated development of Advanced GSS.

All graduate courses which can be included in study leading to one of these awards have been categorised as transitional, advanced or specialist.

- The Certificate of Graduate Studies will be available to students who successfully complete four graduate courses (ie 24 units).
- The Diploma of Graduate Studies will be available to students who successfully complete six graduate courses (ie 36 units), including a minimum of 12 units from courses in the advanced and/or specialist categories.
- The Master of Studies will be available to students who successfully complete eight graduate courses (ie 48 units), including a minimum of 24 units from courses in the advanced and/or specialist categories.

Admission is open throughout the year, and commencement will depend upon individual course choice.

Where can I find out more?

Dr Anna Robinson, GSS Academic Advisor

T: +61 2 6125 5487

E: graduate.courses@anu.edu.au

W: www.anu.edu.au/gss

GGC CRICOS Code: 062242B



Graduate Studies Select is a new, flexible graduate coursework initiative at ANU.



There are over 100 clubs and societies for students at ANU, including the ANU Learning Communities.

CONTACT DETAILS

ANU COLLEGES

ANU College of Arts and Social Sciences

T: +61 2 6125 2898
E: enquiries.arts@anu.edu.au
W: cass.anu.edu.au

ANU College of Asia and the Pacific

T: +61 2 6125 2353
E: enquiries.asiapacific@anu.edu.au
W: asiapacific.anu.edu.au

ANU College of Business and Economics

T: +61 2 6125 3807
E: info.cbe@anu.edu.au
W: cbe.anu.edu.au

ANU College of Engineering and Computer Science

T: +61 2 6125 0677
E: student.services@cecs.anu.edu.au
W: cecs.anu.edu.au

ANU College of Law

T: +61 2 6125 3483
E: enquiries.law@anu.edu.au
W: law.anu.edu.au

ANU College of Medicine, Biology and Environment

T: +61 2 6125 2809
E: science.enquiries@anu.edu.au
W: cmbe.anu.edu.au

ANU College of Physical Sciences

T: +61 2 6125 2809
E: science.enquiries@anu.edu.au
W: cops.anu.edu.au

UNIVERSITY SERVICES

Academic Skills and Learning Centre

W: <http://academicskills.anu.edu.au/>
T: +61 2 6125 2972

Accommodation Services

W: accom.anu.edu.au/UAS/186
T: +61 2 6125 1100

Admissions Office

W: www.anu.edu.au/sas/admission/
T: +61 2 6125 5594
E: admiss.enq@anu.edu.au

Careers Centre

W: www.anu.edu.au/careers
T: +61 2 6125 3593

Chaplains

W: www.anu.edu.au/chaplaincy/
T: +61 2 6125 4246

Child Care

W: info.anu.edu.au/StudyAt/International_Office/student_life/Non_School_Aged_Childcare.asp

Counselling Centre

W: www.anu.edu.au/counsel
T: +61 2 6125 2442

Dean of Students

W: www.anu.edu.au/dos/index.html
T: +61 2 6125 4184

Disability Support Unit

W: www.anu.edu.au/disabilities
T: +61 2 6125 5036

Fees Office

T: +61 2 6125 8124
E: fees.officer@anu.edu.au
W: www.anu.edu.au/sas/fees

Graduate Information Literacy Program

W: ilp.anu.edu.au/grad
T: +61 2 6125 1087

Graduate Studies Select

T: +61 2 6125 5487
E: graduate.courses@anu.edu.au
W: www.anu.edu.au/gss

Health Services

W: www.anu.edu.au/health
T: +61 2 6125 3598

International Office

W: info.anu.edu.au/studyat/International_Office
T: +61 2 6125 4643

Jabal Indigenous Higher Education Centre

W: www.anu.edu.au/jabal
T: +61 2 6125 3520

Postgraduate and Research Students' Association

W: parsa.anu.edu.au
T: +61 2 6125 4187

Research Student Development Centre

W: <http://researchstudents.anu.edu.au/>
E: rsdc@anu.edu.au

Scholarships & Prizes Office

W: www.anu.edu.au/scholarships
T: +61 2 6125 7254
E: graduate.scholarships@anu.edu.au

Student Mobility

W: info.anu.edu.au/studyat/International_Office/exchange
T: +61 2 6125 4643

Student Information and Guidance Network (SIGN)

W: info.anu.edu.au/studyat/International_Office/sign
T: +61 2 6125 3938

University Library

W: anulib.anu.edu.au/lib_home.html
T: +61 2 6125 4428



THE AUSTRALIAN NATIONAL UNIVERSITY

Canberra ACT 0200 Australia

ANU CRICOS Provider Number 00120C

W: www.anu.edu.au